

# EDI technical specification



**MCM**  
**Monthly Control Message: Lloyd's**

**March 2023**

**MONTHLY CONTROL MESSAGE**  
**(MCM)**  
**PROSPECTUS**

**Update - March 2023:** This technical specification was released in March 2023 and replaces the version dated April 2004. The following changes have been made:

Formatting has been applied to reflect the technical specification has been published by the London Market Joint Venture.

<b>Section Number/Name</b>	<b>Change</b>	<b>Reason for Change</b>
Title Page, Spec Contents	Has been updated to remove any references to Xchanging and has been replaced with those for the DXC Service Desk	Notes amended

## **MONTHLY CONTROL MESSAGE PROSPECTUS**

### **CONTENTS**

#### **Use of the Prospectus**

1.0	Introduction
2.0	Clerical Procedures
3.0	Transmission Information
4.0	Operating Queries
5.0	Control Message Structure Diagram
6.0	Repeating Group of Segments
7.0	Segment Specifications
8.0	Sample Messages
Appendix A	Segments Directory
Appendix B	Registration Form
Appendix C	GISA Segment Change
Appendix D	Saturday Processing

**USE OF THE PROSPECTUS**

**Enquiries concerning the Prospectus should be addressed to:**

DXC Service Desk by email to [servicecentre@dx.com](mailto:servicecentre@dx.com) or call 0870 380 0830

This manual has been compiled for the guidance of the London Market Brokers and ins-sure services bureaux and DXC staff. DXC technology will accept no liability in respect of any inaccuracy contained herein

**INDEXING GUIDE****Date of Issue of Page**

The date of issue will appear at the top of each page.

**Blank Pages**

Throughout the prospectus blank pages are intentionally left in order that there is room for expansion of the text.

Where a space is left, the prospectus will contain a note to that effect.

**AMENDMENTS. INSERTIONS AND DELETIONS****Amendments**

Updates to this prospectus will be issued by Market Services, DXC. Each set of updates to the manual will be accompanied by a covering letter.

**Insertions**

Where it is necessary to expand a subject in the prospectus an additional page/s will be issued for insertion. At the top of each page will be shown the subject to which it relates and the date of issue. It will also be coded and page numbered consecutively following the last existing page number given to that subject. If it is a new subject the numerical sequence will commence with the insertion.

**Deletions**

When a page becomes obsolete the prospectus holder will be advised that the subject matter on that page is no longer applicable. The obsolete page should be removed.

THIS PAGE IS INTENTIONALLY LEFT BLANK

**MONTHLY CONTROL MESSAGE****INTRODUCTION****1.1 Availability**

The Monthly Control Message is available for 'users' who meet the following prerequisites.

- a) The user must be connected to LIMNET. Details regarding connection are available from Lloyd's ITG Customer Support Centre, extension 5333.
- b) Where the user is utilising Interbridge, or ETS tables Interbridge/ETS software, or an equivalent must be fully installed and operational on the recipients machine. Details regarding Interbridge or ETS tables are available from Lloyd's ITG Customer Support Centre, extension 5333. It is recommended that a user operates the latest version of Interbridge or ETS. The Interbridge or ETS tables are provided by the Corporation and transmission will be arranged once a request for a Message is received.
- c) Alternatively, the user must be connected to the Lloyd's Insurance Network (LIN) and have had MQ Series and LDEX software installed.

This specification is based on the Monthly Control Message as received by the user after translation, using Interbridge tables as supplied by the Corporation.

**1.2 Information Provided**

The Monthly Control Message detailed in this prospectus will provide users with an independent control of all transactions processed through the Corporation which are advisable on the daily Underwriters Signing Message for a particular calendar month. The Monthly Control Message is available independently of the USM, ie it is available whether or not the syndicate is in receipt of the USM.

If a request is made to receive the Monthly Control Message mid month the user will receive data based on the whole month's daily advices eg request made 13 September, next Control Message available on first working day of October, which will include data based on the whole of September.

Further details regarding the daily Underwriters Signing Message can be found in the 'Lloyd's Underwriters Signing Message Prospectus', available from Market Services, DXC, Chatham.

### 1.3 **Nominated Users**

Any syndicate may elect to receive the Monthly Control Message, to be processed by their auditor or a nominated user. An auditor or user may process Monthly Control Messages for many syndicates, but the request for the transmission of a Monthly Control Message must be generated by the syndicate. A user can be defined as the data processing department of the underwriting agency or a computer bureau, ie whoever actually processes the syndicates data. Where the user is a bureau or auditor, several syndicates may use that bureau or auditor, so the bureau or auditor may receive data for all those syndicates in one transmission.

### 1.4 **Reconciliation Problems**

If a user has problems reconciling any of the totals on the Monthly Control Message to the business data received during the month of control they should contact:

DXC Service Desk by email to [service.centre@dxc.com](mailto:service.centre@dxc.com) or call 0870 380 0830

In order for the Corporation to assist with any reconciliation issues it will be necessary to specify the following parameters:

Message Type, Message Reference Number, Year/Month, User Number, Syndicate Number, Currency, year of account, business type, audit/risk code, plus their understanding of what the controls should equal.

From the above information the individual items making up that total can be identified and provided to the user in a paper format.

In the majority of cases a user can expect to receive an answer to a reconciliation problem within 24 hours.' However, this service level may not be met if a large number of queries are received.

### 1.5 **Charging Policy**

DXC assumed a 'recipient pays' policy for the placing of data in a LIMNET/IE user's mailbox from 01.01.99 onwards. This change does not apply to production LDEX users.

For retransmissions of data, DXC reserve the right to charge.

DXC operational costs will continue to be recoverable under DXC charges.



**1.6     Use of Data Standards****1.6.1     Technical Co-ordination Group (TCG) Standards**

The Monthly Control Message data fields will be output to TCG standards wherever possible. A cross reference to the TCG standard is made in the Segment Specification (section 7.0).

**1.6.2     United Nations (UN)/Electronic Data Interchange for Administration, Commerce and Transport (EDIFACT) Standards**

The message has been designed in accordance with UN/EDIFACT Message Design Guidelines, revised 10.6.88.

UN/EDIFACT syntax rules (syntax set A) have been adopted for the transmission of the Monthly Control Message.

Where possible, use has been made of existing, approved UN/EDIFACT message segments.

**MONTHLY CONTROL MESSAGE****CLERICAL PROCEDURES****2.1 Introduction**

This section details the Monthly Control Message application procedures. Forms are available from DXC, Market Services, Chatham.

**2.2 Application for Monthly Controls Message**

The syndicate should complete a 'Monthly Control Message Syndicate Request' available from DXC, Market Services, Chatham.

A sample form is shown in Appendix B.

This form is to be used by a syndicate to notify the corporation that they wish to receive the Monthly Control Message and their nominated user is able to process. The responsibility for ensuring that the form is signed by a person authorised to do so rests with the syndicate(s) concerned.

A minimum of two weeks notice is required before any transmission can be made. The user will be notified when the necessary system changes have been made to enable the transmission of the Control Message to commence.

The completed form should be forwarded to:

DXC Service Desk by email to [servicecentre@dx.com](mailto:servicecentre@dx.com) or call 0870 380 0830

**2.3 Amendment to Details**

The same form should also be used when a user wishes to add further syndicates to their Monthly Control Message, or amend their IE User ID or User Account.

THIS PAGE IS INTENTIONALLY LEFT BLANK

**MONTHLY CONTROL MESSAGE****TRANSMISSION INFORMATION****3.1 Supply of Transmissions**

DXC supplies each user with the Monthly Control Message transmissions.

**3.2 Receipt of Transmissions**

Transmissions will be supplied by DXC on a monthly basis, to a users electronic IE mailbox. Internal procedures exist to ensure correct placement of data.

The following timetable outlines the normal availability of the Monthly Control Message.

<b><u>Day</u></b>	<b><u>Time</u></b>	<b><u>Action</u></b>
Last day of the month	0800 hrs) 1800 hrs)	DXC process data for the last day of the month
First working day of the following month	0900 hrs)  1500 hrs)	Last daily USM of previous month available in users mailboxes  Monthly Control Message data available in users mailboxes

**NB.** 'Day' refers to working day.

The above timetable adopts the principle of transmitting data as soon as possible. Users should note that there will be occasions when the service level may not be met, due either to processing delays or large volumes, but it is anticipated that the above timescales will be met 90% of the time.

**Users should note that the Monthly Control Message will not be available until after the despatch of the USM for the last working day of the previous month, even if the USM transmission is delayed, or due to Saturday processing (Please refer to Appendix D).**

Data will remain in the users mailbox until it has been successfully down-loaded by the user, or for a maximum of 30 calendar days, when it will be automatically deleted.

Users are urged to remove their data on the day it is available. Additional storage charges may be incurred where transmissions remain in a user's mailbox for more than 48 hours

### **3.3 Header and Trailer Segments**

Before transmission, the Monthly Control Message will have had the interchange and message header and trailer segments added. These headers and trailers are to EDIFACT standards.

If the user had been provided with the Interbridge table by the Corporation the user's application will not receive the interchange or message trailer segments. The header segments will need to be removed by the user's software, before processing the Monthly Control Message data.

### **3.4 Unreadable or Lost Files**

If a transmission is unreadable or lost, the user should, in the first instance, contact the Lloyd's ITG Customer Support Centre, extension 5333, advising them of the user number and the message reference number in question.

Retransmissions will be available within 6 working hours of request, unless several requests are being dealt with, in which case each will be within 24 hours.

The retransmission will exactly match the structure and content of the initial transmission.

Retransmissions will only be available for the current and previous month, eg. If the user has received the Monthly Control Message for October 1993, re-transmissions will only be possible for September and October 1993.

### **3.5 Processing Delays**

A Email 'broadcast' facility will be utilised by DXC to contact users and advise of processing delays, of more than 6 hours.

Users can, if they wish, contact the DXC Service Desk by email to [service.centre@dx.com](mailto:service.centre@dx.com) or call 0870 380 0830, to obtain information regarding current status.

**3.6 Corporation Sender ID's, Sender Account and Message User Class**

The following Sender ID's and Sender Account will be used by the Corporation for the purpose of transmitting the Monthly Control Message:

Sender ID's:           LLD010  
                          LLD011  
                          LLD012  
                          LLD018

Sender Account:       GBLLD

Message User Class:   UWRCON

**3.7 Nil Return Files**

If, for any one calendar month, no data has been processed for a user, a Monthly Control Message will still be transmitted, but groups one to four will be omitted (see 5.3 structure diagram).

THIS PAGE IS INTENTIONALLY LEFT BLANK

**MONTHLY CONTROL MESSAGE****OPERATING QUERIES****4.1    General**

Various contact points are detailed in this section.

**4.2    General Queries**

Queries on the routine operation of the scheme, application to join the scheme, or data queries should be addressed to:

DXC Service Desk by email to [servicecentre@dx.com](mailto:servicecentre@dx.com) or call 0870 380 0830

**4.3    Lost or Unreadable Transmissions**

Queries concerning lost/unreadable transmissions or general LIMNET/ Interbridge queries should be addressed to:

Lloyd's ITG Customer Support Centre  
Lloyd's of London  
1986 Building  
Tel : 020 7327 5333 or via Lloyd's Internal Extension 5333.

Refer to paragraph 3.4 regarding the availability of retransmissions.



THIS PAGE IS INTENTIONALLY LEFT BLANK

**MONTHLY CONTROL MESSAGE****STRUCTURE DIAGRAM****5.1 Introduction**

The diagram conforms to UN/EDIFACT message design guidelines (10.6.88) and diagramming techniques.

**5.2 General**

The message structure diagrams shown in this section are referenced as follows:

Columns A to H horizontally and Levels 0 - 5, vertically.

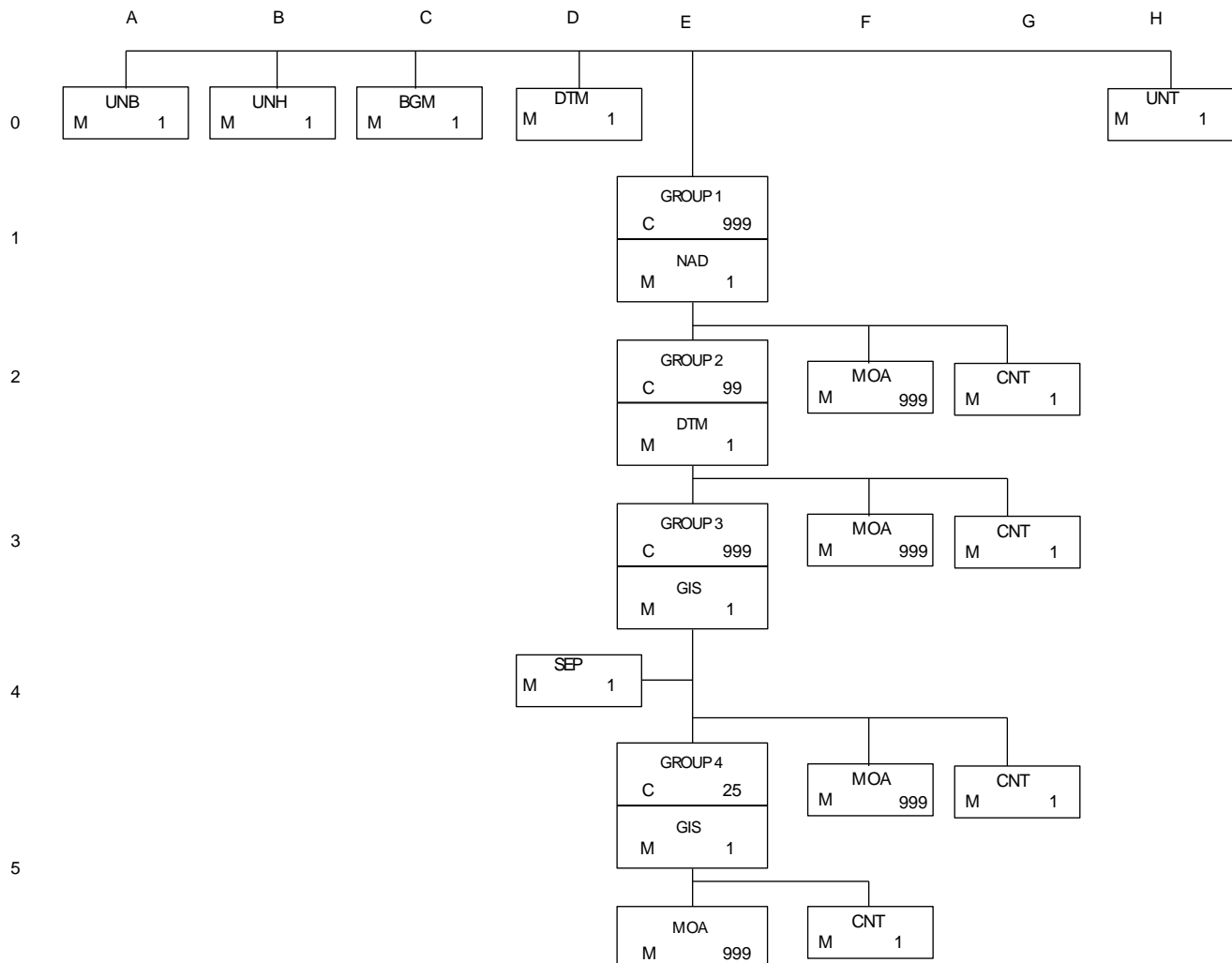
Level 0 segments can be either mandatory (m) or conditional (c) and can only appear once in that position in the message, eg:

AAA	_____	BBB
M1		C1

The remaining levels show the dependence of a segment to the one immediately above it. In addition, segments can be repeated up to the maximum number of times stated, for each single occurrence of the segment immediately above it, eg:

CCC m2           DDD c5	Segment CCC will always appear once and may be followed by up to five occurrences of segment DDD. Segment CCC could be repeated a second time and again be followed by up to five occurrences of segment DDD.
---	---

The same rules regarding status and number of repetitions also apply to repeating groups.

**5.3 Monthly Control Message - Structure Diagram Version 1.3**

**MONTHLY CONTROL MESSAGE****REPEATING GROUPS OF SEGMENTS****6.1 Introduction**

The Monthly Controls Message has been designed to allow several repeating groups of segments in the message.

**6.2 Group 1**

Repeated for each individual syndicate number.

Group 1 contains the balance total of syndicate nett amounts and treaty section nett amounts by settlement currency for all syndicate years of account, as well as an overall transaction count for all syndicate years of account.

**6.3 Group 2**

Repeated for each individual syndicate number, for each year of account.

Group 2 contains balance total of syndicate nett amounts and treaty section nett amounts by settlement currency for each syndicate year of account, as well as an overall transaction count for each syndicate year of account.

This group is nested within Group 1.

**6.4 Group 3**

Repeated for each individual syndicate number, for each year of account, for each audit/risk code.

Group 3 contains balance total of syndicate nett amounts and treaty section nett amounts by settlement currency for each syndicate year of account, for each audit/risk code, as well as an overall transaction count for each syndicate year of account, for each audit/risk code.

This group is nested within Group 2.

**With effect from 30<sup>th</sup> April 2004, Group 3 has increased the number of repeats from 99 audit/risk codes within a Year of Account to 999. (Please refer to Appendix C for further details).**

**6.5     Group 4**

Repeated for each individual syndicate number, for year of account, for each audit/risk code for each business category code.

Group 4 contains Debit and Credit totals by settlement currency for each syndicate for each year of account, for each audit/risk code for each business category code as well as an overall transaction count for each year of account, for each audit/risk code for each business category code.

This group is nested within Group 3.

**6.6     Count Calculation**

The overall transaction count is calculated by totalling the number of non-treaty entries eg LPSO signing numbers and dates, and the number of advisable treaty sections,

For the purpose of the transaction count, an entry with an element of VAT, WAR or ceded contained within it, will be classed as one count, eg claim with a VAT amount on it will be classed as one count, although the claim figure will be included in a claim amount, and the VAT amount will be included in a separate VAT amount.

## **MONTHLY CONTROL MESSAGE**

### **SEGMENT SPECIFICATIONS**

#### **7.1 Introduction**

This section details the data element content of the segments that can be present within the Monthly Control Message, once 'down-loaded' into a user's system, and the sequence in which the data is provided.

The information advised for each segment is detailed below

#### **7.2 Segment Position**

This is shown in the format xn where:

- x = the column ID in which the segment appears in the message structure diagram (see section 5.3)
- n = the level (or row) in which the segment appears

#### **7.3 TCG Standard**

The TCG (London Insurance Market, Technical Co-ordination Group) data element name and reference is shown where applicable. Users should note that the TCG data elements have recently been categorised and re-numbered. Where possible the new reference for a data element has been shown. This reference can be used to obtain a full description of each data element from the London Insurance Market Network Information Manual.

#### **7.4 UN/EDIFACT Standard**

The UN/EDIFACT data element reference is shown where applicable.

#### **7.5 Segment Tag**

The 3 character tag that identifies a segment.

#### **7.6 Data Element Status**

The data element status is shown in the column headed S, where 'blank' denotes mandatory (must be present) and 'C' denotes conditional (may be present).

**7.7     Format and Length**

The data element format and length is shown in the column headed F where 'a' denotes alpha/numeric characters and 'n' denotes decimal figures.

The UN/EDIFACT format has been quoted where a UN/EDIFACT data element/segment has been used. Within this format a TCG format may also apply. There may be a discrepancy between the two standards. Control Message data will be output to TCG standards within UN/EDIFACT standards.

**7.8     Value**

The value, or comments, are shown for certain data elements.

**7.9     Example**

An example of each segment, after Interbridge translation, is shown under section 8.0. The examples are not for any one particular transaction and therefore do not relate to one another.

**18**  
**Segment Specification**

7.9.1 <u>SEGMENT POSITION - AO HEADER SECTION - INTERCHANGE HEADER</u>					
This segment is always advised.					
DATA ELEMENT NAME	TCG	UN/E	S	F	VALUE
SEGMENT TAG				a3	'UNB'
SEGMENT ID				a2	blanks
Syntax Identifier		0001		a4	'UNOA'
Syntax ID Version		0002		n1	'1'
INTERCHANGE SENDER ID					
Sender ID		0004		a35	GBLLD .LLD010
FILLER-ALPHA		0007/0008		a18	blanks
INTERCHANGE RECIPIENT					
Recipient ID		0010		a35	UWRCONnnnn
Qualifier				a2	ZZ
FILLER-ALPHA		0007/00014		a16	blanks
DATE/TIME OF PREPARATION					
Date		0017		n6	Format = yymmdd
Time		0019		n4	Format = hhmm
INTERCHANGE CONTROL		)0020			
SEQUENCE NO		)		n8	
FILLER-ALPHA		)		a6	blanks
FILLER-ALPHA		0022/0025		a16	blanks
APPLICATION REFERENCE		)0026		a6	'UWRCON'
FILLER-ALPHA		)		a8	blanks
FILLER-ALPHA		0029		a1	
FILLER-NUMERIC		0031		n1	Zero
FILLER-ALPHA		0032		a35	blanks
TEST INDICATOR		0035		n1	'0' for production '1' for test



**Example Segment**

UNB UNOA1GBLLD .LLD010 | blanks | | 18 blanks |  
 | 35 chars in total |  
 UWRCON1234 | ZZ | 16 blanks 040401120012345678  
 | 35 chars in total |  
 | 22blanks | UWRCON | 9blanks | 0 | 35 blanks | 0

**19****Segment Specifications****30.04.04**

7.9.2	<b>SEGMENT POSITION - BO HEADER SECTION - MESSAGE HEADER</b>				
	This segment is always advised.				
DATA ELEMENT NAME	TCG	UN/E	S	F	VALUE
SEGMENT TAG				a3	'UNH'
SEGMENT ID				a2	blanks
MESSAGE REFERENCE		)		a8	
NUMBER		)0062			
		)			
FILLER - ALPHA		)		a6	blanks
MESSAGE IDENTIFIER					
Message Type		0065		a6	'UWRCON'
Message Version Number		0052		a3	
Message Release Number		0054		a3	
Controlling Agency				a2	'LL'

**Message Reference Number**

This number will increment by '1' for each transmission sent to a specific user.

This data provides users with the opportunity to ensure that all Monthly Control Message transmissions have been received. Any 'gaps' in a user's log of message sequence numbers would indicate that particular transmission(s) are missing and should prompt a request for re-transmission(s).

Should a user stop receiving the Monthly Control Message for a period of time and at a later date resume, the message reference number for the next transmission will be one greater than that for the previous transmission.

**Example Segment**

UNH 87654321 UWRCON1 3 LL

## 20 Segment Specifications

---

7.9.3	<u>SEGMENT POSITION - CO HEADER SECTION – BEGINNING OF MESSAGE</u>				
This segment is always advised.					
DATA ELEMENT NAME	TCG	UN/E	S	F	VALUE
SEGMENT TAG				a3	‘BGM’
SEGMENT ID				a2	‘A’
DOCUMENT					
Filler – numeric		1001		n3	zeros
Message Name		1000		a3	‘CON’
USER NUMBER		1004		a4	
MSG REFERENCE NO				A8	

### **User Number**

The user number allocated for the Monthly Control Message will match that allocated to existing USM users, if specifically requested.

### **Example Segment**

BGMA 000CON1234

## 21 Segment Specifications

---

7.9.4	<b><u>SEGMENT POSITION - DO HEADER SECTION – DATE / TIME REFERENCE</u></b>				
	This segment is always advised.				
DATA ELEMENT NAME	TCG	UN/E	S	F	VALUE
SEGMENT TAG				a3	'DTM'
SEGMENT ID				a2	'A'
QUALIFIER		2005		a3	'CMP'
CONTROL MESSAGE PERIOD		2001		n8	format is YYYYMM00

### **Control Message Period**

The control period is the month and year the Monthly Control Message represents.

### **Example Segment**

DTMA CMP20040400

## 22

### Segment Specifications

---

7.9.5	<b><u>SEGMENT POSITION – E1 DETAIL SECTION – NAME AND ADDRESS</u></b>  This is the first segment within Group 1 and is always advised.				
DATA ELEMENT NAME	TCG	UN/E	S	F	VALUE
SEGMENT TAG				a3	'NAD'
SEGMENT ID				a2	'A'
QUALIFIER		3035		a3	'SYN'
PARTY IDENTIFICATION		)			
Party Identification coded	B001	)3039		a4	Right justified
FILLER - ALPHA			C	a5	blanks

#### **Party/Syndicate Identification**

The Lloyd's syndicate number is advised. Syndicate number is shown with leading blanks.

#### **Example Segment**

NADA SYN 123

## 23 Segment Specifications

---

7.9.6	<u>SEGMENT POSITION – E2 DETAIL SECTION – DATE / TIME REFERENCE</u>					
	This segment is always advised					
	This is the first segment within Group 2, and contains the Year of Account.					
DATA ELEMENT NAME		TCG	UN/E	S	F	VALUE
SEGMENT TAG					a3	‘DTM’
SEGMENT ID					a2	‘B’
QUALIFIER			2005		a3	‘YAC’
YEAR OF ACCOUNT			2001		n8	format is YYYY0000

### **Example Segment**

DTMB YAC20040000

## 24 Segment Specifications

---

7.9.7	<p align="center"><b><u>SEGMENT POSITION – E3 DETAIL SECTION – GENERAL INDICATOR</u></b></p> <p align="center">This segment is always advised</p> <p align="center">This is the first segment within Group 3,</p>				
DATA ELEMENT NAME	TCG	UN/E	S	F	VALUE
SEGMENT TAG				a3	'GIS'
SEGMENT ID				a2	'A'
PROCESSING INDICATOR					
Audit / Risk Code		7771		a3	
Qualifier		1131		a3	'AUM' 'AUN' 'AUA' 'RSK' OR 'NAC'

### **Audit/Risk Code**

Audit Codes were replaced by Risk Codes for the 1991 year of account onwards. Where single character audit codes are present, the first character within this three character field will contain the audit code.

Pre 1971 risks do not contain an audit code, and will therefore receive the appropriate qualifier eg 'NAC'. This qualifier will be preceded by 000 in the Audit/Risk Code field.

### **Qualifier**

'AUM' - Marine Audit Code  
'AUN' - Non-Marine Audit Code  
'AUA' - Aviation Audit Code 'RSK' Risk Code  
'RSK' - Risk Code  
'NAC' - No Audit Code

### **Example Segment**

GISA PD RSK

## 25 Segment Specifications

---

7.9.8	<b><u>SEGMENT POSITION – D4 DETAIL SECTION – SEPARATOR</u></b>				
	This segment acts as a separator between the GIS segments.				
DATA ELEMENT NAME	TCG	UN/E	S	F	VALUE
SEGMENT TAG				a3	'SEP'
SEGMENT ID				a2	'A'
SEPARATOR ID		0081		a1	'1'

### **Example Segment**

SEPA 1

## 26 Segment Specifications

---

7.9.9	<b><u>SEGMENT POSITION – E4 DETAIL SECTION – GENERAL INDICATOR</u></b>				
	This segment is always advised				
	This is the first segment within Group 4.				
DATA ELEMENT NAME	TCG	UN/E	S	F	VALUE
SEGMENT TAG				a3	'GIS'
SEGMENT ID				a2	'B'
PROCESSING INDICATOR					
Business Category Code		7771		a3	
Qualifier		1131		a3	'BCT'

### **Business Category**

Identifies the type of business for each transaction.

Description	Business Category	Business Description	Category
Premium	PRM	Proportional Treaty	TTY
De-Linked Premium	PRD	Statement	
Reserve Premium	RPM	Deferred Premium	DPM
Claim	CLM	De-Linked Deferred Premium	DPD
ORI Premium	PRI	Premium	
ORI Claim	CRI	ORI Deferred Premium	DRI
		ORI Reserve Premium	RRI

**Note:** Business Category Codes PRD and DPD will change to PRM and DPM when they become triggered for settlement.

The LPSO signing number and date will remain unchanged.

### **Example Segment**

GISB PRMBCT



7.9.10	<p align="center"><b><u>SEGMENT POSITION – E5 DETAIL SECTION – MONETARY AMOUNT</u></b></p> <p align="center">This segment is always advised</p> <p>This segment advises Group 4 amounts and contains debit and credit totals by settlement currency, for each syndicate year of account, for each audit/risk code, for each business category code. A zero balance will be transmitted as an empty component, rather than as an explicit value, and will receive a credit qualifier eg 'NCR'. Occurrences of any one currency will be advised together, appearing in alphabetical order of currency code.</p> <p>NOTE: The amounts also include non-cash treaty section amounts.</p>				
DATA ELEMENT NAME	TCG	UN/E	S	F	VALUE
SEGMENT TAG				a3	'MOA'
SEGMENT ID				a2	'A'
MONETARY AMOUNT					
Qualifier		5797		a3	
Filler - numeric		)5004		n3	zeros
Amount		)		n15	2 implied decimal places
Currency		6345		a3	

**Qualifier**

The values for the qualifier field are as follows:-

NCR	-	Net amount credit
NDR	-	Net amount debit
VCR	-	VAT amount credit
VDR	-	VAT amount debit
WCR	-	War amount credit
WDR	-	War amount debit
CCR	-	Ceded amount credit
CDR	-	Ceded amount debit

**Currency**

The currency code is the ISO alpha abbreviation for each settlement currency.

**Example Segment**

MOAA NCR0000000000000012345GBP

7.9.11	<p align="center"><b><u>SEGMENT POSITION – F5 DETAIL SECTION – CONTROL TOTALS</u></b></p> <p align="center">This segment is always advised</p> <p>This segment is a count of transactions, for each syndicate year of account, for each audit/risk code, for each business category code, which were processed through DXC and advised on the USM.</p>				
DATA ELEMENT NAME	TCG	UN/E	S	F	VALUE
SEGMENT TAG				a3	'CNT'
SEGMENT ID				a2	'A'
CONTROL					
Qualifier		6069		a3	'TXN'
Transaction Count		6066		n15	
Measure Unit Specifier (not used)			C		
CONTROL (not used )			C		
CONTROL (not used )			C		
CONTROL (not used )			C		
CONTROL (not used )			C		

**Segment Example**

CNTA TXN000000123453581

7.9.12	<p align="center"><b><u>SEGMENT POSITION – F4 DETAIL SECTION – MONETARY AMOUNT</u></b></p> <p align="center">This segment is always advised</p> <p>This segment is within Group 3 and advises amounts at audit / risk code within year of account within individual syndicate number. The amounts are the balance totals of the corresponding Debit / Credit amounts in Group 4. The balance totals are calculated by deducting total debits from total credits, which will result in either a debit or credit balance total. A zero balance will be transmitted as an empty component rather than as an explicit value, and will receive a credit qualifier eg, 'NCR'.</p>				
DATA ELEMENT NAME	TCG	UN/E	S	F	VALUE
SEGMENT TAG				a3	'MOA'
SEGMENT ID				a2	'B'
MONETARY AMOUNT					
Qualifier		5797		a3	
Filler - numeric		)5004		n3	zeros
Amount		)		n15	2 implied decimal places
Currency		6345		a3	

**Qualifier**

The values for the qualifier field are as follows:-

NCR	-	Net amount credit
NDR	-	Net amount debit

**Currency**

The currency code is the ISO alpha abbreviation for each settlement currency.

**Example Segment**

MOAB NCR0000000000000012345USD

**30**  
**Segment Specifications**

7.9.13	<p align="center"><b><u>SEGMENT POSITION – G4 DETAIL SECTION – CONTROL TOTALS</u></b></p> <p align="center">This segment is always advised</p> <p>This is a count of transactions, for an audit / risk code for a year of account, for an individual syndicate, which were processed through DXC and advised on the USM.</p>				
DATA ELEMENT NAME	TCG	UN/E	S	F	VALUE
SEGMENT TAG				a3	'CNT'
SEGMENT ID				a2	'B'
CONTROL					
Qualifier		6069		a3	'TXN'
Transaction Count		6066		n15	
Measure Unit Specifier (not used)			C		
CONTROL (not used )			C		
CONTROL (not used )			C		
CONTROL (not used )			C		
CONTROL (not used )			C		

**Segment Example**

CNTB TXN0000000000000012

## 31 Segment Specifications

7.9.14	<p align="center"><b><u>SEGMENT POSITION – F3 DETAIL SECTION – MONETARY AMOUNT</u></b></p> <p align="center">This segment is always advised</p> <p>This segment is within Group 2, and advises amounts within year of account within individual syndicate number. The amounts are the balance totals of the corresponding debit / credit amounts in Group 4. The balance totals are calculated by deducting total debits from total credits, which will result in either a debit or credit balance total. A zero balance will be transmitted as an empty component rather than as an explicit value, and will receive a credit qualifier eg 'NCR'.</p>				
DATA ELEMENT NAME	TCG	UN/E	S	F	VALUE
SEGMENT TAG				a3	'MOA'
SEGMENT ID				a2	'C'
MONETARY AMOUNT					
Qualifier		5797		a3	
Filler - numeric		)5004		n3	zeros
Amount		)		n15	2 implied decimal places
Currency		6345		a3	

### Qualifier

The values for the qualifier field are as follows:-

NCR	-	Net amount credit
NDR	-	Net amount debit

### Currency

The currency code is the ISO alpha abbreviation for each settlement currency.

### Example Segment

MOAC NCR0000000000000012345CAD

7.9.15	<p align="center"><b><u>SEGMENT POSITION – G3 DETAIL SECTION – CONTROL TOTALS</u></b></p> <p align="center">This segment is always advised</p> <p>This segment is a count of transactions, within year of account, within individual syndicate number, which were processed through DXC and advised on the USM.</p>				
DATA ELEMENT NAME	TCG	UN/E	S	F	VALUE
SEGMENT TAG				a3	'CNT'
SEGMENT ID				a2	'C'
CONTROL					
Qualifier		6069		a3	'TXN'
Transaction Count		6066		n15	
Measure Unit Specifier (not used)			C		
CONTROL (not used )			C		
CONTROL (not used )			C		
CONTROL (not used )			C		
CONTROL (not used )			C		

**Segment Example**

CNTC TXN000000123453581

7.9.16	<p style="text-align: center;"><b><u>SEGMENT POSITION – F2 DETAIL SECTION – MONETARY AMOUNT</u></b></p> <p style="text-align: center;">This segment is always advised</p> <p>This segment is within Group 1, and advises amounts at syndicate number level. The amounts are the balance totals of the corresponding Group 4 amounts. The balance totals are calculated by deducting total debits from total credits, which will result in either a debit or credit balance total, A zero balance will be transmitted as an empty component rather than as an explicit value, and will receive a credit qualifier eg, 'NCR'.</p>				
DATA ELEMENT NAME	TCG	UN/E	S	F	VALUE
SEGMENT TAG				a3	'MOA'
SEGMENT ID				a2	'D'
MONETARY AMOUNT					
Qualifier		5797		a3	
Filler - numeric		)5004		n3	zeros
Amount		)		n15	2 implied decimal places
Currency		6345		a3	

**Qualifier**

The values for the qualifier field are as follows:-

NCR	-	Net amount credit
NDR	-	Net amount debit

**Currency**

The currency code is the ISO alpha abbreviation for each settlement currency.

**Example Segment**

MOAD NCR000000000000000012345GBP

**34**  
**Segment Specifications**

7.9.17	<p align="center"><b><u>SEGMENT POSITION – G2 DETAIL SECTION – CONTROL TOTALS</u></b></p> <p align="center">This segment is always advised</p> <p>This segment is a count of transactions, at syndicate number level, which were processed through DXC and advised on the USM.</p>				
DATA ELEMENT NAME	TCG	UN/E	S	F	VALUE
SEGMENT TAG				a3	'CNT'
SEGMENT ID				a2	'D'
CONTROL					
Qualifier		6069		a3	'TXN'
Transaction Count		6066		n15	
Measure Unit Specifier (not used)			C		
CONTROL (not used )			C		
CONTROL (not used )			C		
CONTROL (not used )			C		
CONTROL (not used )			C		

**Segment Example**

CNTD TXN000000001234567



**35**  
**Segment Specifications**

---

7.9.18	<b><u>SEGMENT POSITION – HO TRAILER SECTION – MESSAGE TRAILER</u></b>  This segment is always advised				
DATA ELEMENT NAME	TCG	UN/E	S	F	VALUE
SEGMENT TAG				a3	'UNT'
SEGMENT ID				a2	blanks
NUMBER OF SEGMENTS IN MESSAGE		0074		n6	
MESSAGE REFERENCE NUMBER		0062		a8	
FILLER – ALPHA			C	a6	blanks

**Message Reference Number**

The message reference number appearing in this segment will be the same as that appearing in the 'UNH' segment.

**Example Segment**

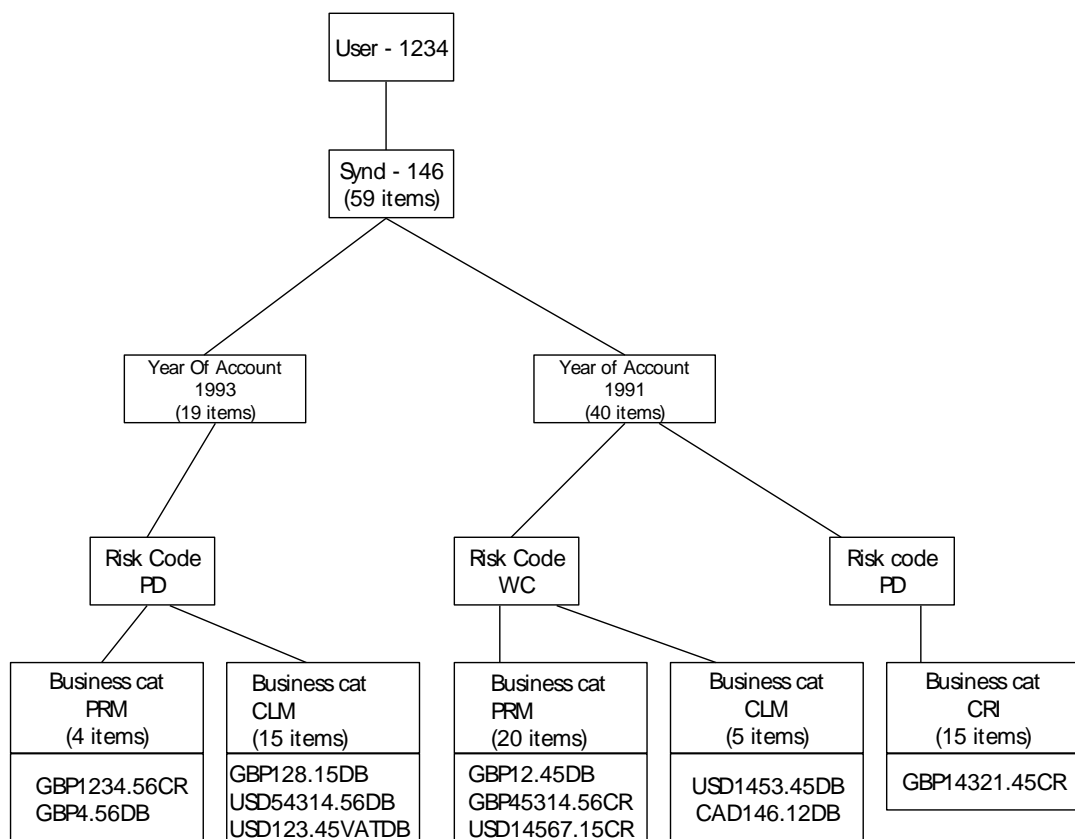
UNT 00000487654321

## MONTHLY CONTROL MESSAGE

### Flow Chart

#### 8.0 Flow Chart of Message

The flow-chart below shows the source data that is used within the sample messages (8.1).



---

**CONTROL MESSAGE**

**Samples**

**8.1 Sample Message(s)**

The examples below are for a single syndicate. They do not include the header or trailer sections of the Monthly Controls Message.

Example one assumes that the data has been translated by Interbridge software.

Example two is in EDIFACT standard and has not been translated by Interbridge software.

**Example One**

BGMA 000CON1234  
DTMA CMP19930900  
NADA SYN 146  
DTMB YAC19930000  
GISA PD RSK  
SEPA 1  
GISB PRMBCT  
MOAA NCR0000000000000123456GBP  
MOAA NDR0000000000000456GBP  
CNTA TXN000000000000004  
GISB CLMBCT  
MOAA NDR000000000000012815GBP  
MOAA NDR0000000000005431456USD  
MOAA VDR000000000000012345USD  
CNTA TXN0000000000000015  
MOAB NCR0000000000000110185GBP  
MOAB NDR0000000000005431456USD  
CNTB TXN0000000000000019  
MOAC NCR0000000000000110185GBP  
MOAC NDR0000000000005431456USD  
CNTC TXN0000000000000019  
DTMB YAC19910000  
GISA WC RSK  
SEPA 1  
GISB PRMBCT  
MOAA NCR0000000000004531456GBP  
MOAA NDR00000000000001245GBP  
MOAA NCR0000000000001456715USD  
CNTA TXN0000000000000020  
GISB CLMBCT  
MOAA NDR000000000000014612CAD  
MOAA NDR000000000000145345USD  
CNTA TXN0000000000000005  
MOAB NDR000000000000014612CAD  
MOAB NCR0000000000004530211GBP  
MOAB NCR0000000000001311370USD  
CNTB TXN0000000000000025

Continued....

GISA	PD RSK
SEPA	1
GISB	PRMBCT
MOAA	NDR0000000000001432145GBP
CNTA	TXN0000000000000015
MOAB	NDR0000000000001432145GBP
CNTB	TXN0000000000000015
MOAC	NDR000000000000014612CAD
MOAC	NCR0000000000003098066GBP
MOAC	NCR0000000000001311370USD
CNTC	TXN0000000000000040
MOAD	NDR000000000000014612CAD
MOAD	NCR0000000000003208251GBP
MOAD	NDR0000000000004120086USD
CNTD	TXN0000000000000059

Example Two

BGM+000:CON:1234'  
DTM+CMP+19930900'  
NAD+SYN+-146'  
DTM+YAC+19930000'  
GIS+PD:RSK'  
SEP+1'  
GIS+PRM:BCT'  
MOA+NCR:1234.56:GBP'  
MOA+NDR:4.56:GBP'  
CNT+TXN:4'  
GIS+CLM:BCT'  
MOA+NDR:128.15:GBP'  
MOA+NDR:54314.56:USD'  
MOA+VDR:123.45:USD'  
CNT+TXN:15'  
MOA+NCR:1101.85:GBP'  
MOA+NDR:54314.56:USD'  
CNT+TXN:19'  
MOA+NCR:1101.85:GBP'  
MOA+NDR:54314.56:USD'  
CNT+TXN:19'  
DTM++YAC+19910000'  
GIS+WC:RSK'  
SEP+1'  
GIS+PRM:BCT'  
MOA+NCR:45314.56:GBP'  
MOA+NDR:12.45:GBP'  
MOA+NCR:14567.15:USD'  
CNT+TXN:20'  
GIS+CLM:BCT'  
MOA+NDR:146.12:CAD'  
MOA+NDR:1453.45:USD'

Continued....

CNT+TXN: 5'  
MOA+NDR:146.12:CAD'  
MOA+NCR:45302.11:GBP'  
MOA+NCR:13113.70:USD'  
CNT+TXN:25'  
GIS+PD:RSK'  
SEP+1'  
GIS+PRM:BCT'  
MOA+NDR:14321.45:GBP'  
CNT+TXN:15'  
MOA+NDR:14321.45:GBP'  
CNT+TXN:15'  
MOA+NDR:146.12:CAD'  
MOA+NCR:30980.66:GBP'  
MOA+NCR:13113.70:USD'  
CNT+TXN:40'  
MOA+NDR:146.12:CAD'  
MOA+NCR:32082.51:GBP'  
MOA+NDR:41200.86:USD'  
CNT+TXN:59'

**MONTHLY CONTROL MESSAGE**

**SEGMENTS DIRECTORY**

**Introduction**

All segments used in the Monthly Control Message are listed below in alphabetical order.

	<b><u>TAG</u></b>	<b><u>SEGMENT NAME</u></b>
1.0	BGM	Beginning of Message
2.0	CNT	Control Totals
3.0	DTM	Date / Time Reference
4.0	GIS	General Indicator
5.0	MOA	Monetary Amount
6.0	NAD	Name & Address
7.0	SEP	Separator
8.0	UNH	Message Header
9.0	UNT	Message Trailer

The function, format and length of each of the above segments are detailed in the following pages. The length quoted for each data element is that received by the user's application. The format key is as follows:-

a	-	alpha / numeric
n	-	numeric

Also, the UN/EDIFACT reference, where applicable, is shown against a data element.

1.0	<b><u>BGM – Beginning Of Message</u></b>		
	Used to indicate the beginning of a message and to transmit an identifying number and type of message		
Data Element Name	UN/E	Format	Length
Segment Tag		a	3
Segment ID		a	2
Filler	1001	n	3
Document Reference	1000	a	3
User Number	1004	a	4
Total Segment Length			15

2.0	<b><u>CNT – Control Totals</u></b>		
	Used to provide message control totals.		
Data Element Name	UN/E	Format	Length
Segment Tag		a	3
Segment ID		a	2
Qualifier	6069	a	3
Value	6066	n	15
Total Segment Length			23



3.0	<b><u>DTM – Date / Time Reference</u></b>		
	Used to specify pertinent dates, eg control period month.		
Data Element Name	UN/E	Format	Length
Segment Tag		a	3
Segment ID		a	2
Qualifier	2005	a	3
Date	2000	n	8
Total Segment Length			16

4.0	<b><u>GIS – General Indicator</u></b>		
	Used to transmit a processing indicator		
Data Element Name	UN/E	Format	Length
Segment Tag		a	3
Segment ID		a	2
Category Code	7771	a	3
Qualifier	1131	a	3
Total Segment Length			11

5.0	<b><u>MOA – Monetary Amount</u></b>		
	Used to specify a monetary amount.		
Data Element Name	UN/E	Format	Length
Segment Tag		a	3
Segment ID		a	2
Qualifier	5797	a	3
Filler - numerical	5004	n	3
Amount	5004	n	15
Currency	6345	a	3
Total Segment Length			29

6.0	<b><u>NAD – Name and Address</u></b>		
	Used to specify a party, (eg syndicate).		
Data Element Name	UN/E	Format	Length
Segment Tag		a	3
Segment ID		a	2
Qualifier	3035	a	3
Party Identification Code	3039	a	9
Total Segment Length			17

7.0	<b><u>SEP - Separator</u></b>  Used to separate alike segments within the same section of a message.		
Data Element Name	UN/E	Format	Length
Segment Tag		a	3
Segment ID		a	2
Separator Identification	0081	a	1
Total Segment Length			6

8.0	<b><u>UNH – Message Header</u></b>		
	Used to head, identify and specify a message.		
Data Element Name	UN/E	Format	Length
Segment Tag		a	3
Segment ID		a	2
Message Reference Number	0062	a	14
Message Type	0065	a	6
Message Version Number	0052	a	3
Message Release Number	0054	a	3
Controlling Agency		a	2
Total Segment Length			33

9.0	<b><u>UNT – Message Trailer</u></b>		
	Used to end and check the completeness of a message.		
Data Element Name	UN/E	Format	Length
Segment Tag		a	3
Segment ID		a	2
Number Of Segments In The Message	0074	n	6
Message Reference Number	0062	a	14
Total Segment Length			25

---

## MONTHLY CONTROL MESSAGE (MCM) - (Syndicate Request)

---

Syndicate Number(s): *(Please specify years of account for each syndicate requested)*

Will the Monthly Control Message be processed by a nominated user? **YES** ☐ **NO** ☐

Do you require the user no. to be the same as the one used for USM? **YES** ☐ **NO** ☐

If yes, please advise the USM user number

IE User Account: *(or LDEX No.)*

IE User ID No: *(or LDEX address)*

LDEX Option : Opt 1 – existing EDIFAC file

☐

Opt 2 – Lloyd's translation

☐

Effective date: *(processing date)*

Name:

Position:

Name of Underwriting Agency:

Address of nominated user or syndicate computer department:

Telephone number:

Fax number:

Name of contact:

Signature:

Date:

Please return to:

**DXC Service Desk by email to [servicecentre@dx.com](mailto:servicecentre@dx.com) or call 0870 380 0830**



## **BACKGROUND**

At the start of 2004, Lloyd's introduced 40 additional risk codes for use by Lloyd's underwriters. These new codes were introduced in order to enable the Corporation to produce more detailed and reliable data regarding business being written within Lloyd's. This increase in risk codes affected the MCM messages that were due to be transmitted at the beginning of March 2004.

The Monthly Control Message provides totals and counts for a given month broken down by Settlement Currency within Business Category within Audit/Risk Code within Year of Account within Syndicate Number - with totals being produced at each level.

A limit was imposed on the message for the maximum number of times a particular level can be repeated - i.e. the number of Years of Account for a Syndicate Number.

With effect from 30<sup>th</sup> April 2004 these limits are:-

- 25 Business Categories within an Audit/Risk Code.
- 999 Audit/Risk Codes within a Year of Account.
- 99 Years of Account within a Lloyd's Syndicate Number.
- 999 Lloyds Syndicate Numbers within a single Monthly Control Message.

## **IMPACT ON MONTHLY CONTROL MESSAGE**

The introduction of the new risk codes referred to above made it possible for DXC to process business for a Syndicate with more than 99 Risk Codes for a particular Year of Account in any given month. The affected part of the Monthly Control Message was Group 3 'GISA' segment (Please refer to page14, 6.4). With effect from 30<sup>th</sup> April 2004 DXC increased the number of repeats from 99 Audit/Risk Codes within a Year of Account to 999. (Please refer to the structure diagram version 1.3.page 13).

## **MESSAGE VERSION NUMBER**

With effect from 30<sup>th</sup> April 2004 the. Message Header section ('UNH' Segment tag, page19), changed the Message Version Release Number from '2' to '3'.

### **i.e. Example Segment**

UNH 87654321 UWRCON1 3 LL

**SATURDAY PROCESSING**

Due to DXC's desire to improve the service to their customers, Saturday Processing has been introduced with effect from 17th April 2004 in order to speed up the settlement of premium & claims entries. Items processed on a Saturday will be allocated a signing date as if processed on a Friday and therefore treated as an extension of Friday's processing day. This change means that a significant number of entries are being settled one day earlier than previously.

The timing of the transmission of the messages is therefore impacted. Daily messages such as USM, BSM & SCM may now be delivered overnight on Saturday on a weekly basis. The MCM may also be delivered overnight on a Saturday when the last working day of the month is a Friday. Please see DXC Market Communication Reference 2004/027 for further details.