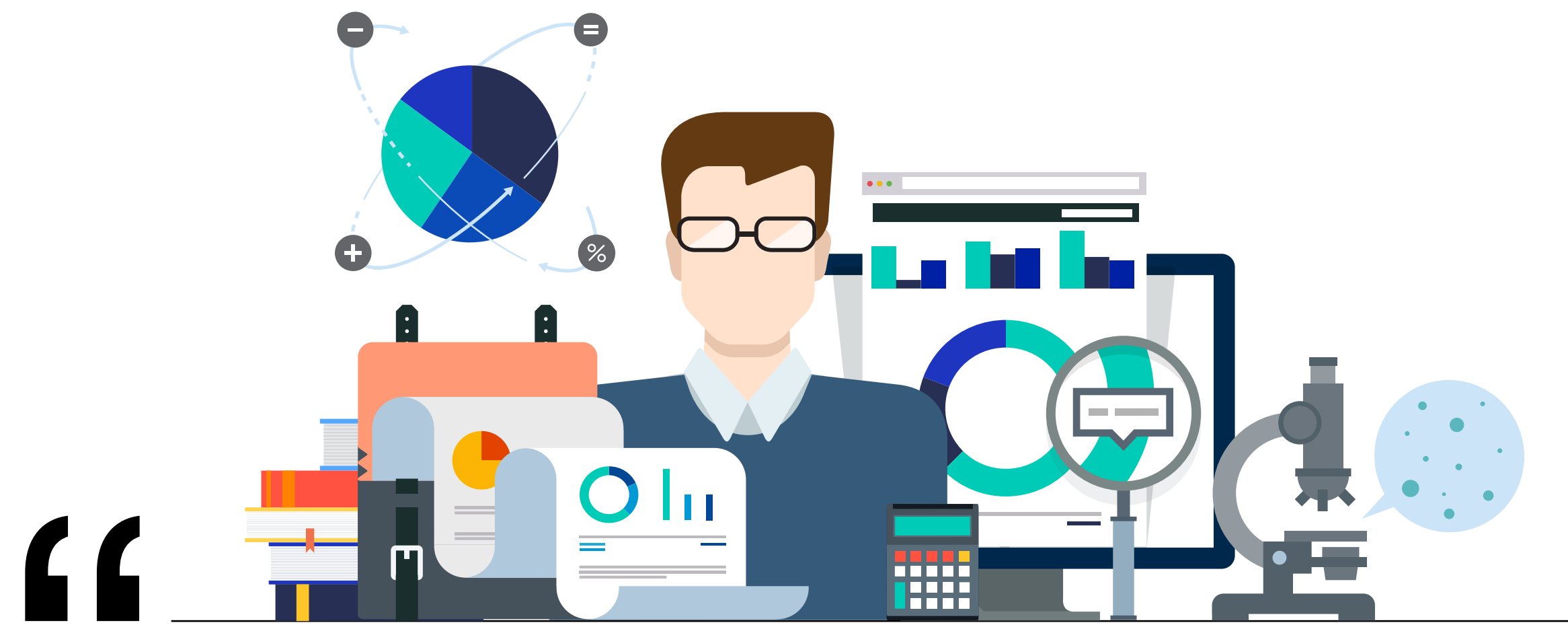


Lloyd's Asia Financial Lines



The development of the Financial Lines market in Asia has witnessed a significant transition, evolving from a challenging 'hard' market to a more stable trading environment.. Throughout this cycle, syndicates have displayed resilience and adaptability, riding the waves of change. As the market matures, we will continue to offer innovative product offerings, enhanced risk and limit management with the use of pooling capacity, and focus on sustainable growth with a keen eye on claims inflation.

Francis Lim
Financial Lines Development Group Co-Head
Senior Underwriter Financial Lines and Medical Malpractice

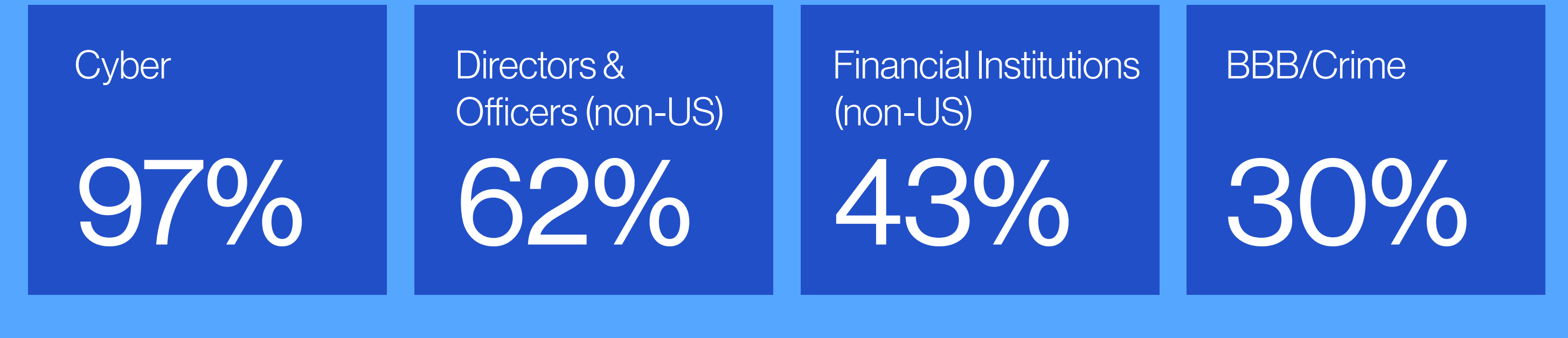
Teck Siong Ng
Financial Lines Development Group Co-Head
Regional Manager – Cyber Risks, Beazley

- ➔ Together with our clients, we are committed to growing Asia
- ➔ We strive to become a one-stop solution for all financial lines needs
- ➔ We are open to both complex and non-complex risks

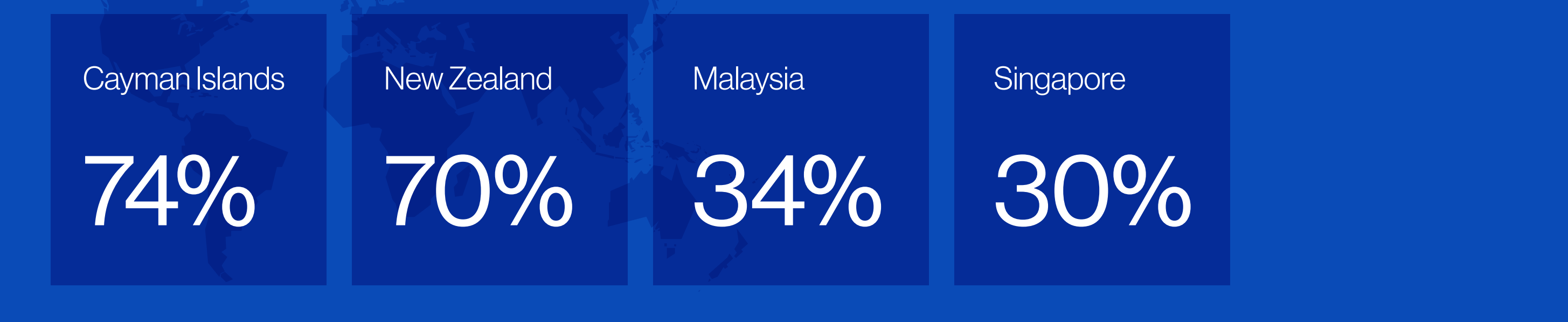
More than 380m USD of GWP was written by Lloyd's Asia platform from 2018 to 2022 across all Financial Lines classes.

Growth classes of business

5 year CAGR (2017 to 2022)

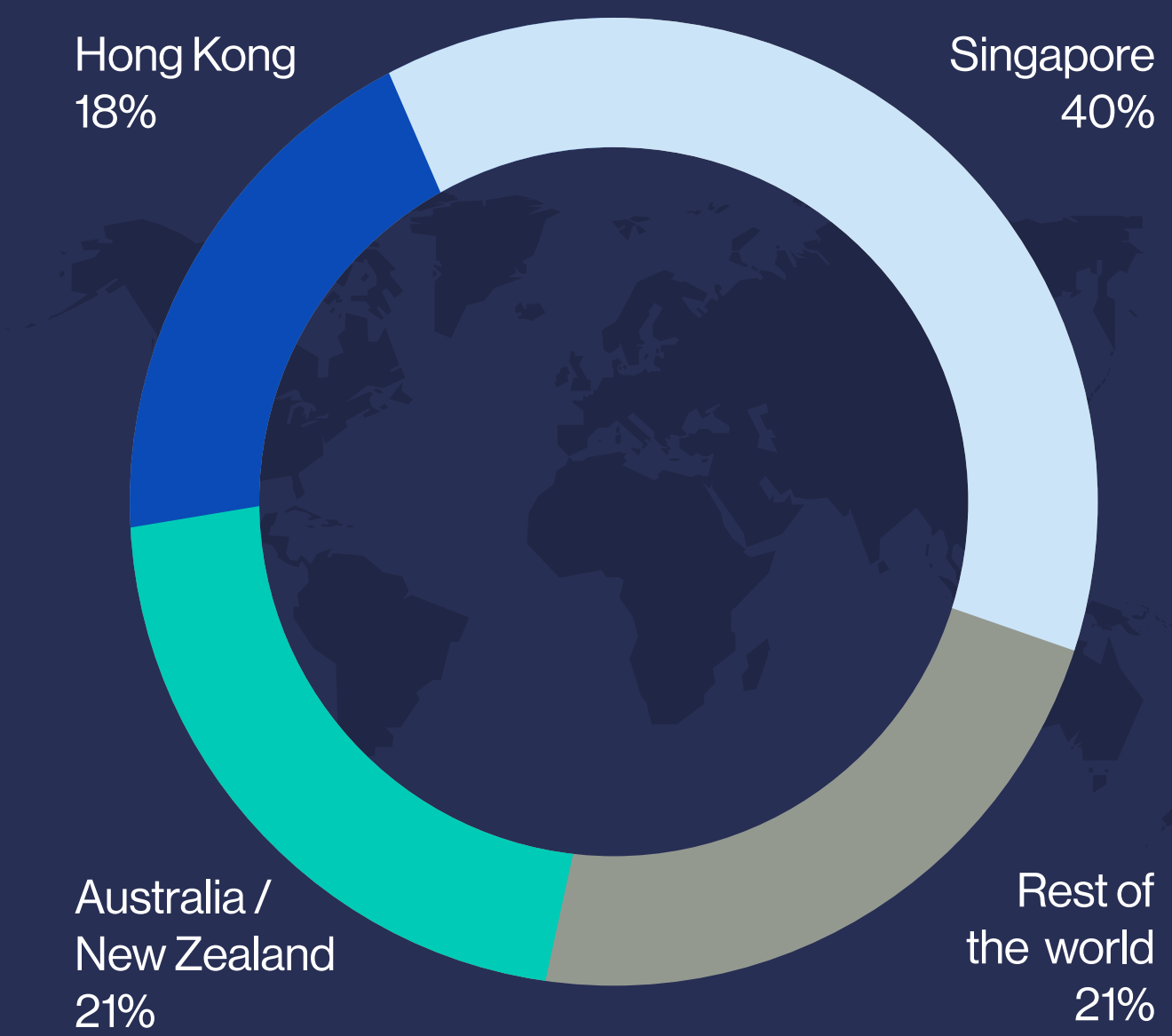


Growth regions by domicile of insured (5 Year CAGR 2017-2022)



2022 geographical breakdown

% of overall GWP by domicile of insured



Appetite matrix

Service Company	Cyber		D&O		PI	
	Max limit per risk (USDm)	Lead/Follow	Max limit per risk (USDm)	Lead/Follow	Max limit per risk (USDm)	Lead/Follow
Allied World	On a coverholder basis only	On a coverholder basis only	N/A	N/A	N/A	N/A
Antares	5	Follow/Lead excess layer	5	Follow	5	Follow/Lead excess layer
Beazley	15	Both	15	Both	5	Both
Markel	5	Both	15	Both	15	Both
Munich Re	5	Both	7	Both	7	Both
Newline	3	Follow for XOL only	15	Both	15	Both
Total Lloyd's Asia capacity (USDm)	33		57		47	

Service Company	FI		Med Mal		Manufacturer's E&O	
	Max limit per risk (USDm)	Lead/Follow	Max limit per risk (USDm)	Lead/Follow	Max limit per risk (USDm)	Lead/Follow
Allied World	N/A	N/A	25	Both	N/A	N/A
Antares	5	Follow/Lead excess layer	N/A	N/A	5	Follow/Lead excess layer
Beazley	10	Both	10	Both	N/A	N/A
Markel	10	Both	N/A	N/A	N/A	N/A
Munich Re	7	Both	N/A	N/A	N/A	N/A
Newline	15	Both	15	Both	5	Follow for XOL only
Total Lloyd's Asia capacity (USDm)	47		25		10	

Contact details

Allied Word
Hwan Kim
Vice President, Lead Underwriter
hwan.kim@awac.com

Jermyn Tan
Underwriter
jermyn.tan@awac.com

Edward Lok
Assistant Vice President, Underwriter
edward.lok@awac.com

Mandy Wong
Underwriter
mandy.wong@awac.com

Antares
Cheryl Cheng
Financial Lines Underwriter
ccheng@antaresglobal.com

Beazley
Clara Han
Underwriter – IFL
clara.han@beazley.com

Dindson Phua
Underwriter – Misc Medical & Life Sciences
dindson.phua@beazley.com

Hatty Monroe
Underwriter – IFL
hatty.monro@beazley.com

Jae Pak
Underwriter – Product Recall
jae.pak@beazley.com

Kylie Chan
Assistant Underwriter – Cyber Risks
kylie.chan@beazley.com

Mike Lu
Underwriter – IFL
mike.lu@beazley.com

Nicholas Tey
Regional Manager – Financial Lines
nicholas.tey@beazley.com

Razif Abdullah
Underwriter – Cyber & Technology
razif.abdullah@beazley.com

Teck Siong Ng
Regional Manager – Cyber Risks
Tecksiong.ng@beazley.com

Wei Xiang Yeo
Assistant Underwriter – Financial Lines
weixiang.yeo@beazley.com

Markel
Simon Moi
Head of PFRs – Asia
simon.moi@markel.com

Joe Wong
Underwriter – Southeast Asia
joe.wong@markel.com

Munich Re Syndicate
Winnie Chew
Development Underwriter
wchew@munichre.com

Newline
Jayrius Lai
Assistant Financial Lines Underwriter
jlai@newlinegroup.com

Lee Song Ju
Assistant Financial Lines Underwriter
songjulee@newlinegroup.com

Francis Lim
Senior Financial Lines Underwriter
flim@newlinegroup.com

Susan Chew
Head of Liability
schew@newlinegroup.com

Talbot
Rob Hands
Chief Executive Officer
robert.hands@talbotuw.com

Kong Tat Goh
Assistant Underwriter
kongtat.goh@talbotuw.com

Tokio Marine Kiln
Samuel Bye
Cyber Underwriter
samuel.bye@tokiomarinekiln.com