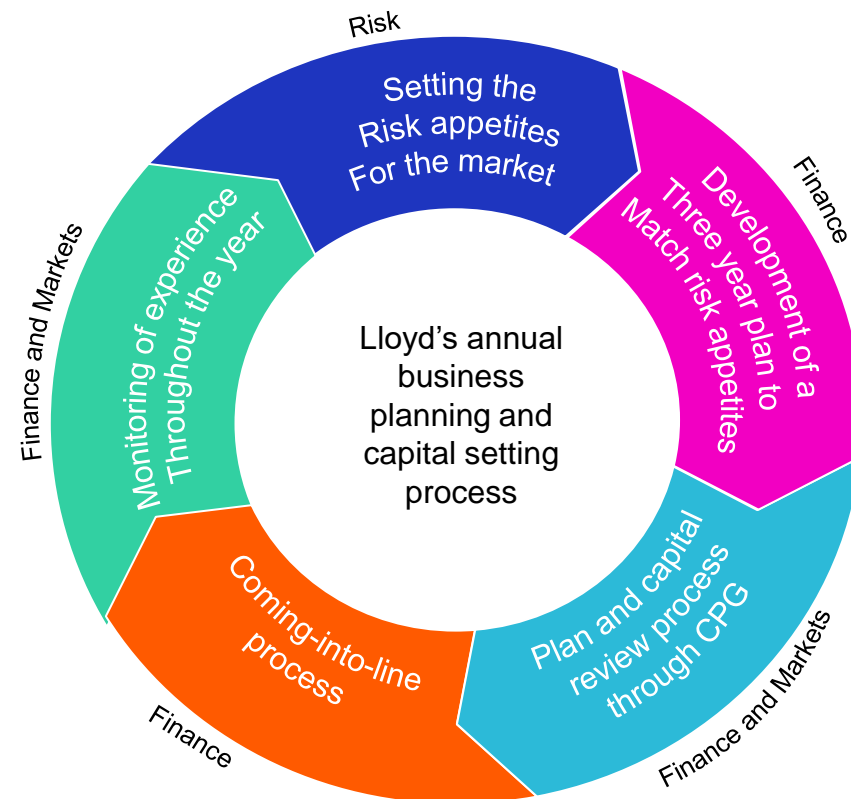


Capital and Planning Group (CPG)

The CPG process is a key Lloyd's oversight activity

- CPG is a key part of Lloyd's governance and oversight, bringing together the processes of business plan review, capital setting and independent risk oversight.
- CPG's role is to:
 - 1) Approve business plans for the market to meet the Council's risk appetite for the prospective year of underwriting
 - 2) Set capital, based on past performance and risk profile, to support the business plan
- As part of its review of syndicate plans and capital, CPG considers Managing Agent's current status against Solvency II requirements; any areas of non-compliance are addressed through CPG decision making.
- The information reviewed is a result of analysis and input from a wide range of technical experts, including Account Managers, Syndicate Performance, Underwriting, Capital, Reserving, Syndicate Capability Oversight, Risk Aggregation and Risk Management.
- Lloyd's has a long track record of evolving and enhancing CPG annually. Further enhancements are being implemented to the plan and capital setting process for 2022 as in previous years, based on proactive engagement with the market.



Coordinated process across Lloyd's divisions

The process brings together expert technical reviews, holistic syndicate insights and risk oversight



1. **Plan review:** All aspects of Syndicate Business Plans are reviewed including premium, expenses, reinsurance, catastrophe exposure in line with syndicate categorisation and capabilities.
2. **Capital review:** Capital will be set based on a validated and approved internal model, accounting for past performance and realistic assumptions of the uncertainty, on both a one-year and ultimate basis. Reserving reviews occur alongside the capital assessment ensuring that syndicates have the right assessment of uncertainty.
3. **Account Managers:** Account Managers ensure insights and analysis from technical teams are effectively consolidated.
4. **Risk Management review:** Risk Management focuses on challenging and advising on, 1) whether the CPG process delivers outcomes in line with the Lloyd's Council risk appetite, 2) whether the CPG operates within an effective control framework, including the appeals process, and 3) individual decisions and outcomes.
5. **CPG:** CPG is the body which ultimately has the final approval of all plans and associated capital each year.

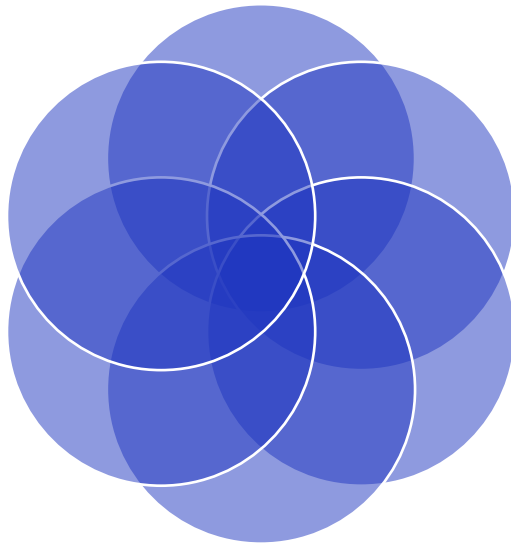
CPG Membership



Peter Montanaro
(Chair)
 Head of Market
 Operations & Delivery

Delphine Marchessaux
 Chief Underwriting
 Officer, Lloyd's
 Brussels

Tony Chaudhry
 Head of Performance
 Management

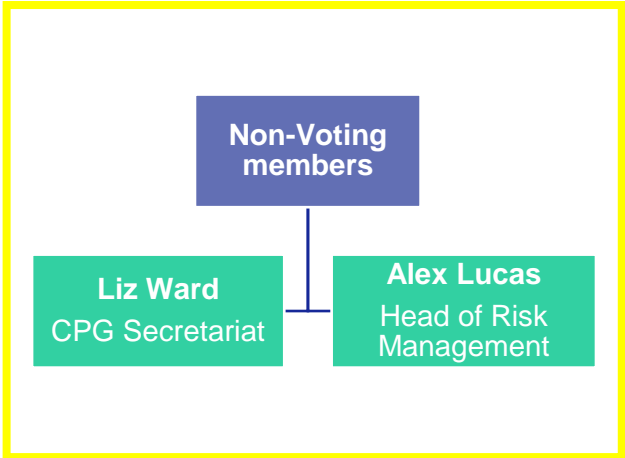


Kirsten Mitchell-Wallace
 Head of Portfolio Risk
 Management

Caroline Dunn
 Head of Market
 Development

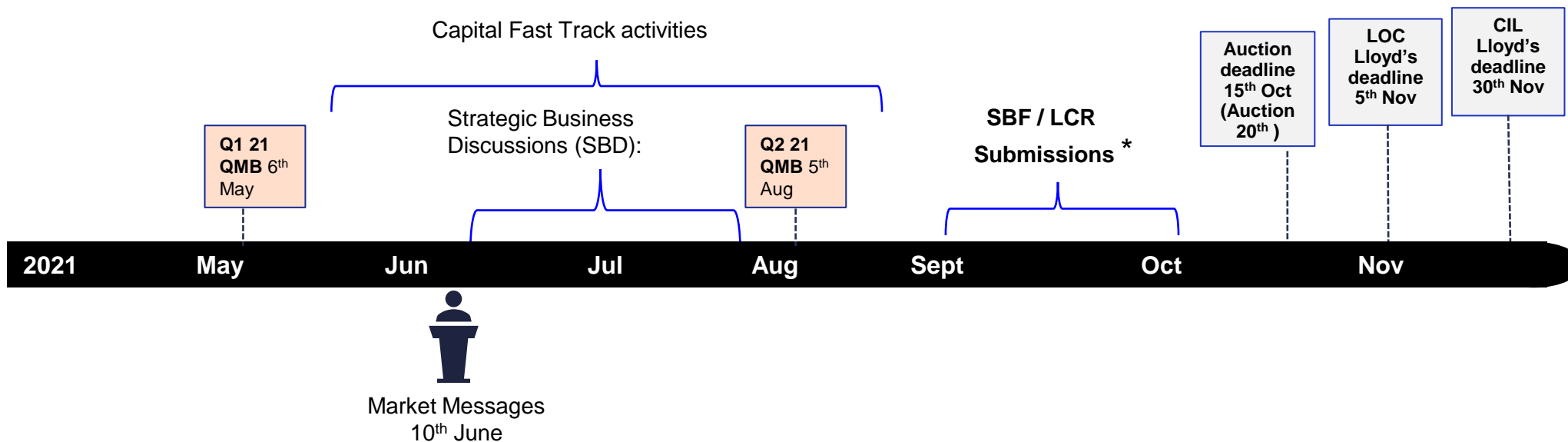
Emma Stewart
 Head of Market
 Reserving and
 Capital

Following CPG decisions
 Account Managers
 communicate the decision
 verbally to managing
 agents, with approvals
 subsequently followed up
 with a formal CPG
 approval letter



2022 CPG Timetable

Key dates and submission deadlines for 2022 CPG process



* Phase	SBF return submission deadline	LCR return submission deadline
Phase 1	2 nd September	6 th September
Phase 2	13 th September	16 th September
Phase 3	20 th September	23 rd September
Phase 4	27 th September	4 th October

❖ The phased approach for SBF and LCR submissions was first implemented in 2019 and was enhanced for 2020/21, to help facilitate a more efficient process and faster feedback times from Lloyd's to the market.

❖ Syndicates are grouped into 4 phases of submissions, based on capital structure and regulatory deadlines.

KEY POINTS OF CONTACT AND FAQs

For general queries or oversight related concerns please contact your Account Manager.

Your Account Manager is also the point of contact for any formal Appeals.

CPG Mailbox

Contact for CPG process related queries, such as questions regarding the CPG Approval letters

CPG@lloyds.com

FAQs:

- ❖ How do I confirm what is my SBF or LCR submission deadline? [Please refer to the Business timetable](#)
- ❖ Where are the latest SBF and LCR instructions? [These are located in MDC under the 2022 YOA](#)
 - ❖ Where can I find the 2022 market messages? [Strategy - Lloyd's \(lloyds.com\)](#)
 - ❖ What is the full process for appeals? [Please refer to the Appeals process guide](#)

[Frequently Asked Questions - Lloyd's \(lloyds.com\)](#)