

EDI technical specification



LIMRIA
LORS: ORI Advice Message

March 2023

Update - March 2023: This technical specification was released in March 2023 and replaces the version dated June 2009. The following changes have been made

Formatting has been applied to reflect the technical specification has been published by the London Market Joint Venture.

Section Number/Name	Change	Reason for Change
5. Data Mapping DE - Audit DTI Code	Format length changed from 1 to 2, also from C to M	Spec amended after mainframe confirmation
5. Data Mapping DE - Bureau Signing Reference	Format length changed from 15 to 13	Spec amended after mainframe confirmation
5. Data Mapping DE - Broker Reference 2	Format length changed from 15 to 13	Spec amended after mainframe confirmation
5. Data Mapping DE - Bureau Original Signing Reference	Format length changed from 15 to 13	Spec amended after mainframe confirmation
5. Data Mapping DE - Year of Account	M/C changed from M to C	Spec amended after mainframe confirmation
5. Data Mapping DE - Company/Syndicate Identification (Client)	Format length changed from 9 to 4	Spec amended after mainframe confirmation
5. Data Mapping DE - Company Synd Reference	M/C changed from M to C	Spec amended after mainframe confirmation
5. Data Mapping DE - Company/Syndicate Secondary Reference	Format length changed from 15 to 8	Spec amended after mainframe confirmation
5. Data Mapping DE - Lead Syndicate Identification	M/C changed from M to C	Spec amended after mainframe confirmation
5. Data Mapping DE - Interest	Format length changed from 70 to 30	Spec amended after mainframe confirmation
5. Data Mapping DE - ORI Further Narrative	Format length changed from 70 to 64	Spec amended after mainframe confirmation
5. Data Mapping DE - Reinsurer Company/Synd Identification	M/C changed from C to M	Spec amended after mainframe confirmation
5. Data Mapping DE - Reinsurer Company/Synd Status Code	M/C changed from C to M	Spec amended after mainframe confirmation
6. Data Conditions - Audit DTI Code	M/C changed from M to C	Spec amended after mainframe confirmation
6. Data Conditions - Company/Synd Reference	M/C changed from M to C	Spec amended after mainframe confirmation
6. Data Conditions - Lead Syndicate Identification	M/C changed from M to C	Spec amended after mainframe confirmation
6. Data Conditions - Lloyd's Accounting Type	M/C changed from M to C	Spec amended after mainframe confirmation
6. Data Conditions - Reinsurer Company/Synd ID	M/C changed from C to M	Spec amended after mainframe confirmation
6. Data Conditions - Year of Account	M/C changed from M to C	Spec amended after mainframe confirmation

APPENDIX F3

LORS OUTWARD R/I ADVICE MESSAGE - LIMRIA

CONTENTS

1. INTRODUCTION
 - 1.1 Purpose
 - 1.2 References
 - 1.3 Field of Application
 - 1.4 Functional Definition
2. MESSAGE DESIGN
3. MESSAGE DEFINITION
 - 4.1 Introduction
 - 4.2 Group and Segment Usage
 - 4.3 Segment Table
 - 4.4 Segment Directory Notes
 - 4.5 Code Set Notes
4. BRANCHING DIAGRAM
5. DATA MAPPING
6. DATA CONDITIONS FOR EACH LIMRIA BUSINESS APPLICATION
7. EXAMPLE MESSAGE

1. INTRODUCTION

1.1 Purpose

This appendix specifies the Lloyd's Outward Reinsurance Scheme (LORS) message, LIMRIA, that is sent to advise LORS participating Underwriters of new and corrected Outward Reinsurance (ORI) items.

1.2 References

The following documents have been used in the composition of this message:

- UN/EDIFACT Syntax rules (ISO 9735)
- UN Trade Data Elements Directory (ex ISO 7372)
- UN/EDIFACT Data Segments Directory
- UN/EDIFACT Code Set Directory

1.3 Field of Application

This message has been specifically designed for use within the Lloyd's Outward Reinsurance Scheme (LORS).

1.4 Functional Definition

Currently the only defined LORS business application for LIMRIA is to enable DXC to advise the Underwriters, who are participating in the scheme, of new, amended or replacement ORI items. The LIMRIA message design supports the transmission of :

- all new items relating to the same policy which have the same Unique Market Reference
- an amended pre-settlement item
- a replacement for a post-settlement item.

DXC receives the ORI item details from Brokers, either via data messages or directly via the LORS interactive system. Following validation, the details are made available to the Underwriters, who are responsible for authorising their settlement. Again this can be done interactively or by message, using the LIMRIA message.

This document defines the structure and content of the message that satisfies the above functionality.

2. MESSAGE DESIGN

The LORS Outward Reinsurance Advice (LIMRIA) does not require the use of sections.

3. MESSAGE DEFINITION

3.1. Introduction

The definition of an EDIFACT message that will satisfy a practical business application requires the unambiguous statement of:

- group and segment usage in the business context, which is defined in this appendix.
- the information hierarchy (the message structure), which is also defined in this appendix.
- the standard EDIFACT structures used to compose the message (refer to the LORS Batch Segment Directory in Appendix C).
- the code sets that will be used in the operational application (refer to the LORS Batch Code Set List in Appendix B).

3.2. Group and Segment Usage

3.2.1 PURPOSE

Most of the segments used in this message were designed to be applicable over a wide range of messages covering various commercial and administrative applications. This section is provided to give details of their particular use within this message.

3.2.2 USAGE

UNB, Interchange Header

A mandatory service segment starting, identifying and specifying a transmission. The Application Reference for the LORS Outward Reinsurance Advice Message is LIMORI.

UNH, Message header

A mandatory service segment starting and uniquely identifying a message. The message type for the LORS Outward Reinsurance Advice Message is LIMRIA.

GIS, General Indicator Segment

A mandatory repeating segment indicating the type of item(s) contained within the message i.e. new, amended or replacement item(s) requiring authorisation or advised for information only.

RFF, References

A mandatory repeating segment providing the mandatory Unique Market Reference that the Broker has allocated to the reinsurance policy, plus the reference that the Broker has given to a group of associated credit/debit items that are being advised in the message. If the message contains the details of a single non-grouped credit/debit item, a group reference is not present.

NAD, Name and Address

A mandatory segment identifying the Broker.

Segment Group 1.**SEGMENT GROUP 1**

A mandatory group of repeating segments which has other repeating groups nested within it. This group repeats, up to the maximum of 999 times, once for each item that can be contained in the message.

RFF, References

A mandatory segment giving the Transaction Reference that has been allocated by the Broker to items with the same settlement currency.

CUX, Currencies

A mandatory segment giving the settlement currency code for the item.

Segment Group 2.**RFF, References**

A mandatory, repeating segment containing the Policy Number (Broker Reference 1); the Lloyd's Item Number; and the non-unique Credit/Debit Note Number (Broker Reference 2) that have been allocated to the item by the Broker. Also advised are a number indicating how many movements have been applied to this version of the item; the ORI unique reference (Bureau Unique Reference) allocated by DXC the LORS Bureau Unique Reference Version, the Lloyd's allocated signing reference and, if known, the signing reference of the original premium transaction.

DTM, Date and Time

A mandatory, repeating segment giving the dates when the reinsurance policy cover incepts and ends; the Lloyd's year of account and if applicable the date on which the Broker would like settlement of the item to take place.

PCD, Percentage Details

A mandatory segment that is repeated to give the details of the percentage of the reinsuring company/Syndicates that have been approved by the Department of Trade and Industry; the total percentage reinsured and the percentage that has been ceded to Lloyd's; plus, when applicable, the percentage unprotected from Federal Excise Tax.

Segment Group 3

MOA, Monetary Amount

A mandatory repeating segment providing the monetary amount details of the credit/debit item.

NAD, Name and Address

A mandatory repeating segment supplying the identity of the lead Syndicate on the item and the name of the Retrocessionaire.

CTA, Contacts

A mandatory segment providing the name and telephone number of the person in the Broker office to whom queries, concerning the item, can be directed.

FTX, Free Text

A repeating conditional segment providing policy information, excess details and the type of risk in narrative form plus any additional details relating to the individual credit/debit item.

Segment Group 4

Segment Group 5

SEGMENT GROUP 2

A mandatory group of repeating segments, nested within Group 1, providing the value of the item's codes and processing indicators. This group repeats, up to the maximum of 11 times, for each item contained in the message.

GIS, General Indicator Segment

A mandatory repeating segment which supplies a number of mandatory and conditional codes and indicators that are applicable to the item. These include; codes to describe the category of the item (e.g. claim credit); the method of payment (e.g. deferred); FIL tax code information; a code to indicate the method of settlement (e.g. special settlement); the assigned Department of Trade and Industry code; the risk code; and up to three audit codes (one for each of the pre-1991 Lloyd's insurance markets).

NAD, Name and Address

A conditional segment identifying the leading Syndicate for the market of the Audit Code specified in the preceding GIS segment, i.e. the Syndicate with authority to change that code. This segment will occur once for each Audit Code advised.

SEGMENT GROUP 3

A mandatory group of repeating segments, nested within Group 1, containing the client Syndicate details. It can repeat up to 150 times for each occurrence of Group 1.

NAD, Name and Address

A mandatory segment identifying the Syndicate.

RFF, References

A mandatory repeating segment providing the line number and, Underwriter's references.

MOA, Monetary Amount

A mandatory segment containing the amount that the Syndicate will pay/receive in respect of the credit/debit item.

PCD, Percentage Details

A mandatory segment containing the percentage of the total credit/debit amount that the Syndicate will pay/receive.

SEGMENT GROUP 4

A conditional group of repeating segments, nested within Group 1, which occurs if the item is to be paid by deferred instalments. It contains the instalment details and can repeat up to 36 times for each occurrence of Group 1.

DTM, Date and Time

This segment is mandatory within this segment group. It contains the date that the instalment is due to be settled.

RFF, References

This segment is mandatory within this segment group. It contains the unique instalment number.

MOA, Monetary Amount

This segment is mandatory within this segment group. It contains the monetary amount of a deferred payment.

SEGMENT GROUP 5

A conditional group of repeating segments, nested within Group 1, which provides information regarding the reinsuring company market. It can repeat up to 999 times within each occurrence of Group 1.

NAD, Name and Address

A segment that is mandatory within this conditional segment group. It gives the coded identity and name, of members of the company reinsuring market.

RFF, References

A conditional segment containing the reference of the Collection Note within which the Reinsurer amount was originally included.

GIS, General Indicator Segment

A mandatory repeating segment used to indicate the payment status and role of the reinsuring Company/Syndicate, identified in the preceding NAD segment.

MOA, Monetary Amount

A conditional segment giving the amount that the party, identified in the NAD segment, has paid or has yet to pay.

UNT, Message Trailer

A mandatory service segment sent to end and check the completeness of a message.

UNZ, Interchange Trailer

A mandatory service segment sent to end and check the completeness of an interchange.

3.3 Segment Table

<u>TAG</u>	<u>NAME</u>		<u>REPEATS</u>	<u>REPEATS</u>
UNH	Message Header	M	1	
GIS	General Indicator	M	3	
RFF	References	M	2	
NAD	Name and Address	M	1	
Segment Group 1				
SEGMENT GROUP 1		M		999
RFF	References	M	1	
CUX	Currencies	M	1	
Segment Group 2				
RFF	References	M	10	
DTM	Date and Time	M	5	
PCD	Percentage Details	M	4	
Segment Group 3				
MOA	Monetary Amount	C	3	
NAD	Name and Address	M	2	
CTA	Contacts	M	1	
FTX	Free Text	C	25	
Segment Group 4				
Segment Group 5				
UNT	Message Trailer	M		
SEGMENT GROUP 2				
GIS	General Indicator	M	1	11
NAD	Name and Address	C	1	
SEGMENT GROUP 3				
NAD	Name and Address	M	1	150
RFF	References	M	3	
MOA	Monetary Amount	M	1	
PCD	Percentage Details	M	1	
SEGMENT GROUP 4				
DTM	Date and Time	M	1	36
RFF	References	M	1	
MOA	Monetary Amount	M	1	
SEGMENT GROUP 5				
NAD	Name and Address	M	1	999
RFF	Reference	C	1	
GIS	General Indicator	M	2	
MOA	Monetary Amount	C	1	

3.4. Segment Directory Note

All segments, with the exception of the MOA, GIS, PCD and DTM segments, used in this message are drawn from the UN/EDIFACT Data Segments Directory (90.1), dated 15th February, 1990.

The MOA segment is drawn from the UN/EDIFACT Data Segments Directory (91.1), dated 7th March, 1991.

The GIS segment is drawn from the UN/EDIFACT Quality Control segment directory dated June 1990.

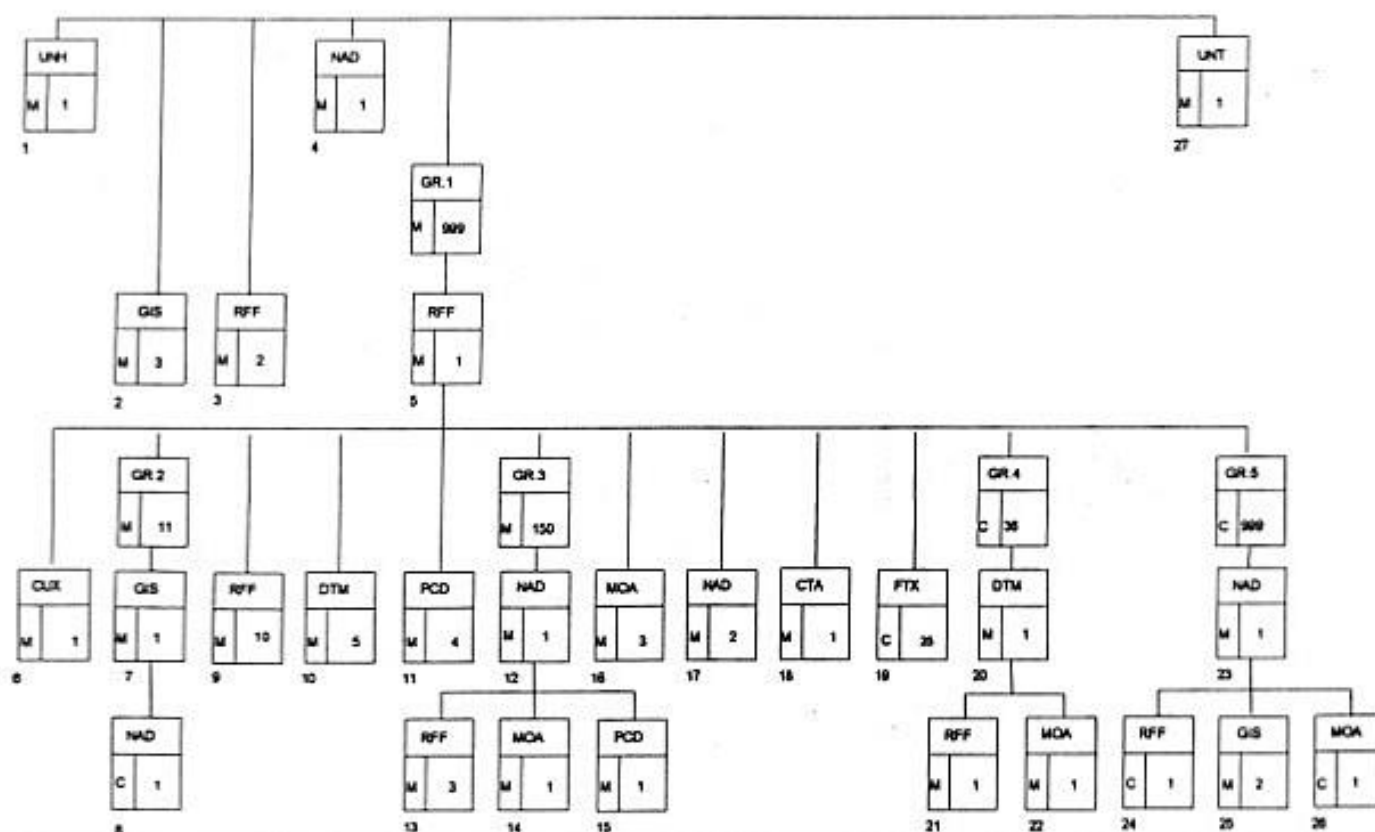
The PCD and DTM segments are London specific standards.

For specification of these segments refer to the LORS Segment Directory (Appendix C).

3.5 Code Sets Note

The code sets that are used in this application are defined in the LORS Code Set List (Appendix B).

4. BRANCHING DIAGRAM for LIMRIA v3.0



5. DATA MAPPING

The segments are listed in the order in which they appear in the message.

The number given in brackets after a segment tag refers to the number shown against the relevant box on the branching diagram in section 4 of this appendix.

The mandatory/conditional status of each data element is shown. This refers to the status of the element within the message and not within the specified segment.

Refer to section 6 of this appendix for the specific conditions that can apply for each LORS business application of LIMRIA.

Refer to section 4 of this manual (Security, Audit and Control) for details of the data mapping for the interchange and message header and trailer segments.

The data element lengths shown below are the TCG formats and could be affected by the LORS Validation rules (refer to Appendix E).

<u>DATA ELEMENT</u>	<u>FORMAT</u>	<u>M/C</u>	<u>COMMENT</u>
MOVEMENT TYPE	an3	M	Mapped into data element 7771, in segment GIS (2), and qualified in data element 1131.
INFORMATION ONLY INDICATOR	an1	C	Mapped into data element 7771, in segment GIS (2), and qualified in data element 1131.
UNIQUE MARKET REFERENCE	an17	M	Mapped into data element 1154, in segment RFF (3), and qualified in data element 1153.
GROUP REFERENCE	an12	C	Mapped into data element 1154, in segment RFF (3), and qualified in data element 1153.
BROKER NUMBER	an4	M	Mapped into data element 3039, in segment NAD (4) and qualified in data element 3035.
TRANSACTION REFERENCE	an12	M	Mapped into data element 1154, in segment RFF (5), and qualified in data element 1153.
SETTLEMENT CURRENCY	an3	M	Mapped into data element 6345, in segment CUX (6), and qualified in data element 6343.
ENTRY TYPE	an3	M	Mapped into data element 7771, in segment GIS (7), and qualified in data element 1131.
AUDIT DTI CODE	an2	C	Mapped into data element 7771, in segment GIS (7), and qualified in data element 1131.
RISK CODE	an2	C	Mapped into data element 7771, in segment GIS (7), and qualified in data element 1131.
AVIATION AUDIT CODE	an2	C	Mapped into data element 7771, in segment GIS (7), and qualified in data element 1131.
MARINE AUDIT CODE	an2	C	Mapped into data element 7771, in segment GIS (7), and qualified in data element 1131.
NON MARINE AUDIT CODE	an2	C	Mapped into data element 7771, in segment GIS (7), and qualified in data element 1131.
TAX CODE	an3	C	Mapped into data element 7771, in segment GIS (7), and qualified in data element 1131.
TREATY EXCESS OF LOSS INDICATOR	an1	C	Mapped into data element 7771, in segment GIS (7), and qualified in data element 1131.
INSTALMENT TYPE	an1	C	Mapped into data element 7771, in segment GIS (7), and qualified in data element 1131.

<u>DATA ELEMENT</u>	<u>FORMAT</u>	<u>M/C</u>	<u>COMMENT</u>
LLOYD'S ACCOUNTING TYPE	an1	C	Mapped into data element 7771, in segment GIS (7), and qualified in data element 1131.
FULL MARKET INDICATOR	an1	C	Mapped into data element 7771, in segment GIS (7), and qualified in data element 1131.
SUPPLEMENTARY DOCUMENTATION INDICATOR	an1	C	Mapped into data element 7771, in segment GIS (7), and qualified in data element 1131.
MARKET LEADER IDENTIFICATION	an4	C	Mapped into data element 3039, in segment NAD (8), and qualified in data element 3035.
LLOYD'S ITEM NUMBER	an5	M	Mapped into data element 1154, in segment RFF (9), and qualified in data element 1153.
MOVEMENT NUMBER	an3	M	Mapped into data element 1154, in segment RFF (9), and qualified in data element 1153.
BUREAU SIGNING REFERENCE	an15	C	Mapped into data element 1154, in segment RFF (9), and qualified in data element 1153.
BROKER REFERENCE 1	an12	M	Mapped into data element 1154, in segment RFF (9), and qualified in data element 1153.
BROKER REFERENCE 2	an12	M	Mapped into data element 1154, in segment RFF (9), and qualified in data element 1153.
BUREAU ORIGINAL SIGNING REFERENCE	an15	C	Mapped into data element 1154, in segment RFF (9), and qualified in data element 1153.
BUREAU UNIQUE REFERENCE	an13	M	Mapped into data element 1154, in segment RFF (9) and qualified in data element 1153.
BUREAU UNIQUE REFERENCE VERSION	an2	M	Mapped into data element 1154, in segment RFF (9) and qualified in data element 1153.
UNIQUE CLAIM REFERENCE	an17	C	Mapped into data element 1154, in segment RFF (9), and qualified in data element 1153.
MAJOR CASUALTY RELATED EVENT CODE	an4	C	Mapped into data element 1154, in segment RFF (9), and qualified in data element 1153.
YEAR OF ACCOUNT	n8	C	Mapped into data element 2001, in segment DTM (10), and qualified in data element 2005.
PLANNED SETTLEMENT DATE	n8	C	Mapped into data element 2001, in segment DTM (10), and qualified in data element 2005.

<u>DATA ELEMENT</u>	<u>FORMA T</u>	<u>M/C</u>	<u>COMMENT</u>
PERIOD OF POLICY FROM DATE	n8	C	Mapped into data element 2001, in segment DTM (10), and qualified in data element 2005.
PERIOD OF POLICY TO DATE	n8	C	Mapped into data element 2001, in segment DTM (10), and qualified in data element 2005.
INCEPTION DATE	n8	C	Mapped into data element 2001, in segment DTM (10), and qualified in data element 2005. For future use
TOTAL COMPANY SYND PERCENTAGE	n10	M	Mapped into data element 5482, in segment PCD (11), and qualified in data element 5777.
PERCENTAGE CEDED TO LLOYD'S	n10	M	Mapped into data element 5482, in segment PCD (11), and qualified in data element 5777.
FETUP PERCENTAGE	n10	C	Mapped into data element 5482, in segment PCD (11), and qualified in data element 5777.
PERCENT CEDED TO DTI APPROVED COMPANIES	n10	C	Mapped into data element 5482, in segment PCD (11), and qualified in data element 5777.
COMPANY/SYNDICATE IDENTIFICATION (CLIENT)	an4	M	Mapped into data element 3039, in segment NAD (12), and qualified in data element 3035.
LINE NUMBER	an3	M	Mapped into data element 1154, in segment RFF (13), and qualified in data element 1153.
COMPANY SYND REFERENCE	an15	C	Mapped into data element 1154, in segment RFF (13), and qualified in data element 1153.
COMPANY/SYNDICATE SECONDARY REFERENCE	an815	C	Mapped into data element 1154, in segment RFF (13), and qualified in data element 1153.
COMPANY SYND NET PREMIUM SETT CCY	n15	M	Mapped into data element 5004, in segment MOA (14), and qualified in data element 5797.
COMPANY SYND PERCENTAGE	n10	M	Mapped into data element 5482, in segment PCD (15), and qualified in data element 5777.
NETT PREMIUM SETTLEMENT CCY	n15	M	Mapped into data element 5004, in segment MOA (16), and qualified in data element 5797.
TOTAL AMOUNT DUE	n15	C	Mapped into data element 5004, in segment MOA (16), and qualified in data element 5797.
TOTAL AMOUNT OUTSTANDING	n15	C	Mapped into data element 5004, in segment MOA (16), and qualified in data element 5797.

<u>DATA ELEMENT</u>	<u>FORMAT</u>	<u>M/C</u>	<u>COMMENT</u>
LEAD SYNDICATE IDENTIFICATION	an4	C	Mapped into data element 3124, in segment NAD (17), and qualified in data element 3035.
INSURED RETROCESSIONAIRE	an50	C	Mapped into two data elements 3124, in segment NAD (17), and qualified in data element 3035.
BROKER CONTACT	an15	M	Mapped into data element 3412, in segment CTA (18), and qualified in data element 3139.
BROKER CONTACT TELEPHONE NUMBER	an15	M	Mapped into data element 3148, in segment CTA (18), and qualified in data element 3139.
VOYAGE LOCATION	an70	C	Mapped into data element 4440, in segment FTX (19), and qualified in data element 4451.
INTEREST	an30	C	Mapped into data element 4440, in segment FTX (19), and qualified in data element 4451.
REINSURANCE EXCESS DETAILS	an70	C	Mapped into data element 4440, in segment FTX (19), and qualified in data element 4451.
PERIOD OF POLICY NARRATIVE	an40	C	Mapped into data element 4440, in segment FTX (19), and qualified in data element 4451.
ORI FURTHER NARRATIVE	an64	C	Mapped into five data elements 4440, in up to twenty FTX (19), segments and qualified in data element 4451.
PLANNED INSTALMENT DUE DATE	n8	C	Mapped into data element 2001, in segment DTM (20), and qualified in data element 2005.
INSTALMENT NUMBER	an3	C	Mapped into data element 1154, in segment RFF (21), and qualified in data element 1153.
NETT INSTALMENT SETT CCY	n15	C	Mapped into data element 5004, in segment MOA (22), and qualified in data element 5797.
REINSURER COMPANY/SYND IDENTIFICATION	an9	M	Mapped into data element 3039, in segment NAD (23), and qualified in data element 3035.
REINSURER COMPANY/SYND NAME	an35	C	Mapped into data element 3124, in segment NAD (23), and qualified in data element 3035.
COLLECTION NOTE REFERENCE	an8	C	Mapped into data element 1154, in segment RFF (24) and qualified in data element 1153.
REINSURER COMPANY/SYND STATUS CODE	an1	M	Mapped into data element 7771, in segment GIS (25), and qualified in data element 1131.

<u>DATA ELEMENT</u>	<u>FORMA T</u>	<u>M/C</u>	<u>COMMENT</u>
REINSURER TYPE	an1	C	Mapped into data element 7771, in segment GIS (25) and qualified in data element 1131.
REINSURER OUTSTANDING AMOUNT	n15	C	Mapped into data element 5004, in segment MOA (26), and qualified in data element 5797.
REINSURER PAID AMOUNT	n15	C	Mapped into data element 5004, in segment MOA (26), and qualified in data element 5797.

6. DATA CONDITIONS FOR EACH LIMRIA BUSINESS APPLICATION

Currently the only LORS business application that utilises the LIMRIA message is the notification of new, amended and replacement ORI items to the Underwriters, by Lloyd's. The data elements that are present in the message, and the conditions under which each can be present, are listed in alphabetical order below.

<u>DATA ELEMENT</u>	<u>M/C</u>	<u>COMMENT</u>
AUDIT DTI CODE	C	
AVIATION AUDIT CODE	C	May be present if the Year Account is 1990 or earlier.
BROKER CONTACT	M	
BROKER CONTACT TELEPHONE NO	M	
BROKER NUMBER	M	
BROKER REFERENCE 1	M	
BROKER REFERENCE 2	M	
BUREAU ORIGINAL SIGNING REF	C	Present if advised by the Broker.
BUREAU SIGNING REFERENCE	C	Only present on replacements of previously settled items.
BUREAU UNIQUE REFERENCE	M	Will always be present.
BUREAU UNIQUE REFERENCE VERSION	M	Will always be present.
COLLECTION NOTE REFERENCE	C	Present if advised by the Broker.
COMPANY/SYND ID (CLIENT)	M	
COMPANY/SYND NETT PREMIUM	M	
COMPANY/SYND PERCENTAGE	M	
COMPANY/SYND REFERENCE	C	
COMPANY/SYND SECONDARY REFERENCE	C	Present if advised by the Broker.
ENTRY TYPE	M	
FETUP PERCENTAGE	C	Present if appropriate to the transaction (US dollar premium credit and return debit items).
FULL MARKET INDICATOR	C	Present if a policy record and/or the full reinsuring market has been advised by the Broker.

<u>DATA ELEMENT</u>	<u>M/C</u>	<u>COMMENT</u>
GROUP REFERENCE	C	Only present if a new group is being advised.
INCEPTION DATE	C	For future use. Will not be present.
INFORMATION ONLY INDICATOR	C	Will be present if the item does not require authorisation, i.e., it is for information only.
INSTALMENT NUMBER	C	Present for deferred items only.
INSTALMENT TYPE	C	Will be present for deferred/reserve items only. If not present the default value of 'C', for Cash, can be assumed.
INSURED RETROCESSIONAIRE	C	Present if advised by the Broker.
INTEREST	C	Present if advised by the Broker.
LEAD SYNDICATE IDENTIFICATION	C	
LINE NUMBER	M	
LLOYD'S ACCOUNTING TYPE	C	
LLOYD'S ITEM NUMBER	M	
MAJOR CASUALTY RELATED EVENT	C	Present if advised by the Broker.
MARINE AUDIT CODE	C	May be present if the Year Account is 1990 or earlier.
MARKET LEADER IDENTIFICATION	C	Will be present for each Audit Code advised.
MOVEMENT NUMBER	M	
MOVEMENT TYPE	M	
NETT INSTALMENT SETT CURRENCY	C	Present for deferred items only.
NETT PREMIUM SETT CURRENCY	M	
NON MARINE AUDIT CODE	C	May be present if the Year Account is 1990 or earlier.
ORI FURTHER NARRATIVE	C	Present if a policy record and/or further narrative has been advised by the Broker. NB If a policy record has been advised the last line of ORI further narrative will state 'A POLICY RECORD EXISTS FOR THIS ITEM'.
PERCENT CEDED TO DTI APPROVED COMPANIES	C	

<u>DATA ELEMENT</u>	<u>M/C</u>	<u>COMMENT</u>
PERCENTAGE CEDED TO LLOYD'S	M	
PERIOD OF POLICY FROM DATE	C	Present if advised by the Broker.
PERIOD OF POLICY NARRATIVE	C	Present if advised by the Broker.
PERIOD OF POLICY TO DATE	C	Present if advised by the Broker.
PLANNED INSTALMENT DUE DATE	C	Present for deferred items only.
PLANNED SETTLEMENT DATE	C	Present if advised by the Broker.
REINSURANCE EXCESS DETAILS	C	Present if advised by the Broker.
REINSURER COMPANY/SYND ID	M	Will be present if the Reinsuring Market details have been advised by the Broker.
REINSURER COMPANY/SYND NAME	C	Will be present if the Reinsuring Market details have been advised by the Broker.
REINSURER COMPANY/SYND STATUS CODE	M	Will be present if the Reinsuring Market details have been advised by the Broker.
REINSURER OUTSTANDING AMOUNT	C	Present if advised by the Broker as part of the reinsuring market details.
REINSURER PAID AMOUNT	C	Present if advised by the Broker as part of the reinsuring market details.
REINSURER TYPE	C	Present if advised by the Broker as part of the Reinsuring Market details.
RISK CODE	C	Present if the Year Account is 1991 or later.
SETTLEMENT CURRENCY	M	
SUPPLEMENTARY DOCUMENT IND	C	Present if advised by the Broker.
TAX CODE	C	Present if appropriate to the transaction (e.g. if item is for Canadian dollars).
TOTAL AMOUNT DUE	C	Present if advised by the Broker.
TOTAL AMOUNT OUTSTANDING	C	Present if advised by the Broker.
TOTAL COMPANY SYND PERCENTAGE	M	
TRANSACTION REFERENCE	M	
TREATY EXCESS OF LOSS IND	C	Present if appropriate for the Tax Code that has been advised.

<u>DATA ELEMENT</u>	<u>M/C</u>	<u>COMMENT</u>
UNIQUE CLAIM REFERENCE	C	Present if advised by the Broker.
UNIQUE MARKET REFERENCE	M	
VOYAGE LOCATION	C	Present if advised by the Broker.
YEAR OF ACCOUNT	C	

7. EXAMPLE MESSAGE

DXC has generated an interchange that contains two LIMRIA messages. The first message contains a group of two new, non-composite, non-deferred, credit/debit items, which have the same Unique Market Reference. The second message contains a replacement for a deferred item.

```

UNB  INTERCHANGE HEADER
      UNH  MESSAGE HEADER
            GIS  MOVEMENT TYPE
            RFF  UNIQUE MARKET REFERENCE
            RFF  GROUP REFERENCE
            NAD  BROKER NUMBER
            RFF  TRANSACTION REFERENCE
            CUX  SETTLEMENT CURRENCY
                  GIS  ENTRY TYPE
                  GIS  AUDIT DTI CODE
                  GIS  RISK CODE
            RFF  LLOYDS ITEM NUMBER
            RFF  MOVEMENT NUMBER
            RFF  BROKER REFERENCE 1
            RFF  BUREAU UNIQUE REFERENCE
            RFF  BUREAU UNIQUE REFERENCE VERSION
            DTM  YEAR OF ACCOUNT
            DTM  PLANNED SETTLEMENT DATE
            PCD  TOTAL COMPANY/SYNDICATE PERCENTAGE
            PCD  PERCENTAGE CEDED TO LLOYD'S
                  NAD  COMPANY/SYNDICATE IDENTIFICATION
                  RFF  LINE NUMBER
                  RFF  COMPANY SYND REFERENCE
                  MOA  COMPANY SYND NET PREM SETT CCY
                  PCD  COMPANY SYND PERCENTAGE
            MOA  NETT PREMIUM SETTLEMENT CCY
            NAD  LEAD SYNDICATE IDENTIFICATION
            NAD  INSURED RETROCESSIONAIRE
            CTA  BROKER CONTACT
                  BROKER CONTACT TELEPHONE NUMBER
            FTX  VOYAGE/LOCATION
            FTX  ORI FURTHER NARRATIVE
                  NAD  REINSURER COMPANY/SYND ID
                      REINSURER COMPANY/SYND NAME
                  RFF  COLLECTION NOTE REFERENCE
                  GIS  REINSURER COMPANY/SYND STATUS CODE
                  GIS  REINSURER TYPE
                  MOA  REINSURER PAID AMOUNT
                  NAD  REINSURER COMPANY/SYND ID
                      REINSURER COMPANY/SYND NAME
                  RFF  COLLECTION NOTE REFERENCE
                  GIS  REINSURER COMPANY/SYND STATUS CODE
                  GIS  REINSURER TYPE
                  MOA  REINSURER PAID AMOUNT
            RFF  TRANSACTION REFERENCE
            CUX  SETTLEMENT CURRENCY
                  GIS  ENTRY TYPE
                  GIS  AUDIT DTI CODE

```

		GIS	RISK CODE
	RFF		LLOYDS ITEM NUMBER
	RFF		MOVEMENT NUMBER
	RFF		BROKER REFERENCE 1
	RFF		BROKER REFERENCE 2
	RFF		BUREAU UNIQUE REFERENCE
	RFF		BUREAU UNIQUE REFERENCE VERSION
	DTM		YEAR ACCOUNT
	PCD		TOTAL COMPANY/SYNDICATE PERCENTAGE
	PCD		PERCENTAGE CEDED TO LLOYDS
		NAD	COMPANY/SYNDICATE IDENTIFICATION
		RFF	LINE NUMBER
		RFF	COMPANY SYND REFERENCE
	MOA		COMPANY SYND NET PREM SETT CCY
	PCD		COMPANY SYND PERCENTAGE
	MOA		NETT PREMIUM SETTLEMENT CCY
	NAD		LEAD SYNDICATE IDENTIFICATION
	NAD		INSURED RETROCESSIONAIRE
	CTA		BROKER CONTACT
			BROKER CONTACT TELEPHONE NUMBER
	FTX		VOYAGE/LOCATION
	FTX		ORI FURTHER NARRATIVE
UNT			MESSAGE TRAILER
UNH			MESSAGE HEADER
	GIS		MOVEMENT TYPE
	RFF		UNIQUE MARKET REFERENCE
	NAD		BROKER NUMBER
	RFF		TRANSACTION REFERENCE
	CUX		SETTLEMENT CURRENCY
		GIS	ENTRY TYPE
		GIS	AUDIT DTI CODE
		GIS	MARINE AUDIT CODE
		NAD	MARKET LEADER IDENTIFICATION
		GIS	INSTALMENT TYPE
		GIS	TAX CODE
	RFF		LLOYDS ITEM NUMBER
	RFF		MOVEMENT NUMBER
	RFF		BUREAU SIGNING REFERENCE
	RFF		BROKER REFERENCE 1
	RFF		BROKER REFERENCE 2
	RFF		BUREAU UNIQUE REFERENCE
	RFF		BUREAU UNIQUE REFERENCE VERSION
	DTM		YEAR ACCOUNT
	DTM		PERIOD OF POLICY FROM
	DTM		PERIOD OF POLICY TO
	PCD		TOTAL COMPANY/SYNDICATE PERCENTAGE
	PCD		PERCENTAGE CEDED TO LLOYDS
		NAD	COMPANY/SYNDICATE IDENTIFICATION
RFF	LINE NUMBER		
		RFF	COMPANY SYND REFERENCE
		MOA	COMPANY SYND NET PREM SETT CCY
		PCD	COMPANY SYND PERCENTAGE
	MOA		NETT PREMIUM SETTLEMENT CCY
	MOA		TOTAL AMOUNT DUE

	MOA	TOTAL AMOUNT OUTSTANDING
	NAD	LEAD SYNDICATE IDENTIFICATION
	CTA	BROKER CONTACT
		BROKER CONTACT TELEPHONE NUMBER
	FTX	ORI FURTHER NARRATIVE
	FTX	ORI FURTHER NARRATIVE
	FTX	ORI FURTHER NARRATIVE
	FTX	ORI FURTHER NARRATIVE
	DTM	PLANNED INSTALMENT DUE DATE
	RFF	INSTALMENT NUMBER
	MOA	NETT INSTALMENT SETT CCY
	DTM	PLANNED INSTALMENT DUE DATE
	RFF	INSTALMENT NUMBER
	MOA	NETT INSTALMENT SETT CCY
	DTM	PLANNED INSTALMENT DUE DATE
	RFF	INSTALMENT NUMBER
	MOA	NETT INSTALMENT SETT CCY
	UNT	MESSAGE TRAILER
UNZ		INTERCHANGE TRAILER