

**Important information about Syndicate Reports and Accounts**

Access to this document is restricted to persons who have given the certification set forth below. If this document has been forwarded to you and you have not been asked to give the certification, please be aware that you are only permitted to access it if you are able to give the certification.

The syndicate reports and accounts set forth in this section of the Lloyd's website, which have been filed with Lloyd's in accordance with the Syndicate Accounting Byelaw (No. 8 of 2005), are being provided for informational purposes only. The syndicate reports and accounts have not been prepared by Lloyd's, and Lloyd's has no responsibility for their accuracy or content. Access to the syndicate reports and accounts is not being provided for the purposes of soliciting membership in Lloyd's or membership on any syndicate of Lloyd's, and no offer to join Lloyd's or any syndicate is being made hereby. Members of Lloyd's are reminded that past performance of a syndicate in any syndicate year is not predictive of the related syndicate's performance in any subsequent syndicate year.

You acknowledge and agree to the foregoing as a condition of your accessing the syndicate reports and accounts. You also agree that you will not provide any person with a copy of any syndicate report and accounts without also providing them with a copy of this acknowledgment and agreement, by which they will also be bound.

# SYNDICATE 6103

---

Report and Financial Statements  
31 December 2018

MAP

---

Underwriting at Lloyd's



# CONTENTS

---

	Page
Chairman's Report	2
<b>SYNDICATE 6103</b>	
<b>UNDERWRITING YEAR DISTRIBUTION ACCOUNTS</b>	
<b>2016 CLOSED YEAR OF ACCOUNT 31 DECEMBER 2018</b>	
Directors and Administration	4
Managing Agent's Report	5
Statement of Managing Agent's Responsibilities	9
Independent Auditor's Report	10
Income Statement: Technical Account – General Business	12
Income Statement: Non-Technical Account	12
Statement of Comprehensive Income	12
Statement of Financial Position	13
Statement of Cash Flows	14
Notes to the Accounts	15
<b>SYNDICATE 6103</b>	
<b>ANNUAL REPORT AND ACCOUNTS 31 DECEMBER 2018</b>	
Directors and Administration	24
Managing Agent's Report	25
Statement of Managing Agent's Responsibilities	32
Independent Auditor's Report	33
Income Statement: Technical Account – General Business	35
Income Statement: Non-Technical Account	36
Statement of Comprehensive Income	36
Statement of Changes in Members' Balances	36
Statement of Financial Position: Assets	37
Statement of Financial Position: Liabilities	37
Statement of Cash Flows	38
Notes to the Accounts	39

## CHAIRMAN'S REPORT

---

Once again the syndicate has produced an excellent return on Stamp Capacity, albeit on a much reduced income. Aggregate profits for an illustrative £10,000 share over the last 7 years are over £20,000, giving context to the small forecast loss in 2017, a year with over \$100 billion of insured natural perils losses.

Richard has maintained the integrity of 2791 and hence 6103's catastrophe pricing despite the plethora of premium-hungry proprietary model-driven operations in this market. As the models' shortcomings are exposed by real life loss activity, underwriters capable of independent thought and analysis will come into their own, and prospects for this specialist syndicate will improve sharply.

**D E S Shipley**

*Chairman*

19 March 2019

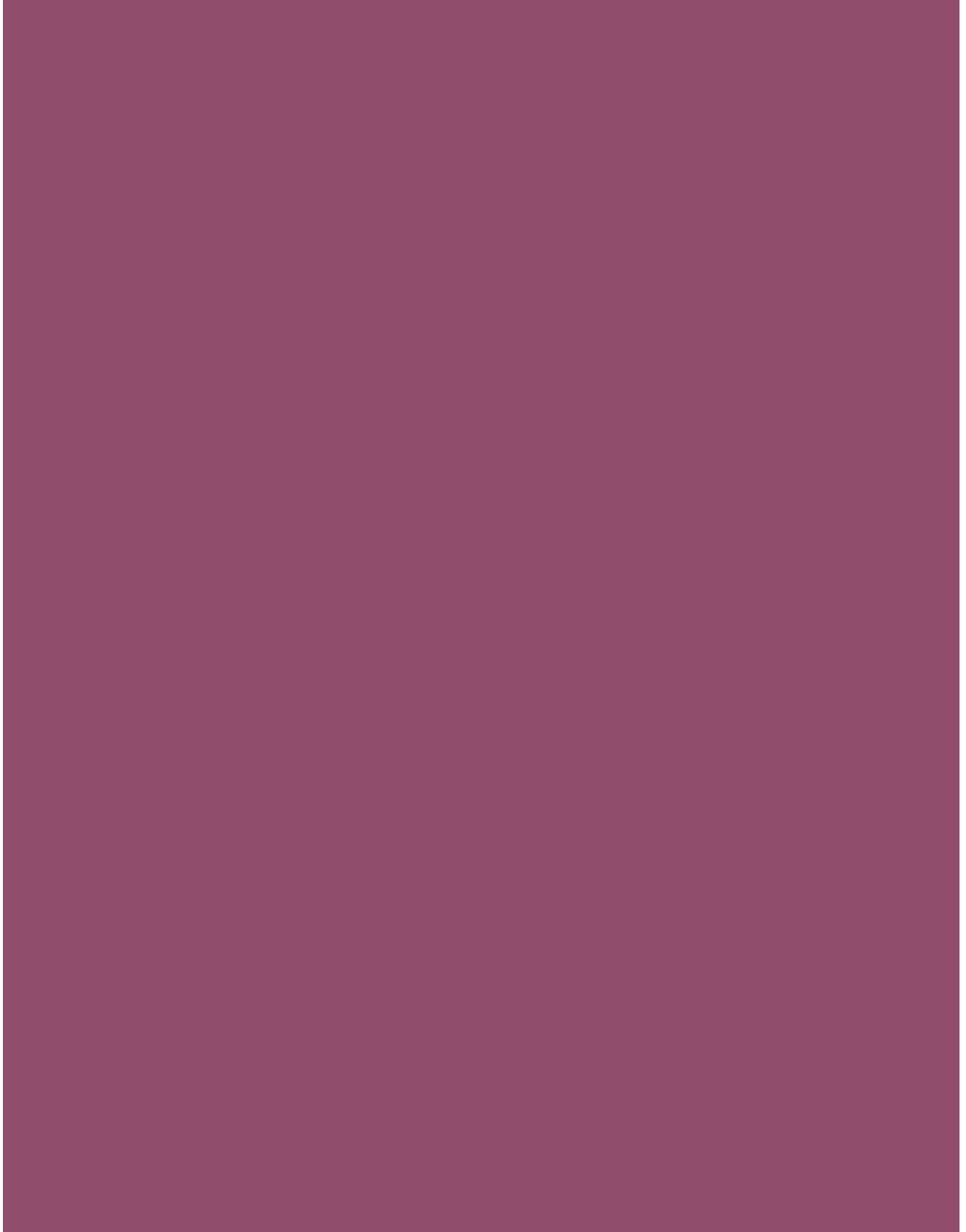
# SYNDICATE 6103

---

Underwriting Year Distribution Accounts

2016 Closed Year of Account

31 December 2018



# DIRECTORS AND ADMINISTRATION

---

## MANAGING AGENT

### Managing Agent

Managing Agency Partners Limited (MAP)

### Directors

K Allchorne (Non-executive)

C E Dandridge (Non-executive)

J D Denoon Duncan

A S Foote (Non-executive)

T P Froehlich (Non-executive)

A Kong

P Langridge

A J T Milligan (Non-executive resigned 31 October 2018)

D E S Shipley (Non-executive Chairman)

C J Smelt

R J Sumner

R K Trubshaw (Active Underwriter)

### Company Secretary

P Langridge

### Managing Agent's Registered Office

Fitzwilliam House

10 St. Mary Axe

London

EC3A 8EN

### Managing Agent's Registration

Registered in England; number: 03985640

## SYNDICATE

### Active Underwriter

R K Trubshaw

### Registered Auditor

Deloitte LLP

Hill House

1 Little New Street

London

EC4A 3TR

# MANAGING AGENT'S REPORT

---

The managing agent presents its report for the 2016 year of account of Syndicate 6103 as closed at 31 December 2018.

These financial statements have been prepared in compliance with the Insurance Accounts Directive (Lloyd's Syndicate and Aggregate Accounts) Regulations 2008 ("2008 Regulations") and in accordance with the Syndicate Accounting Byelaw (No.8 of 2005) and applicable accounting standards in the United Kingdom. Financial Reporting Standard 102 'The Financial Reporting Standard applicable in the UK and Republic of Ireland' (FRS 102) and Financial Reporting Standard 103 'Insurance Contracts' (FRS 103) have been applied. Separate annual accounts under UK GAAP on the calendar year results are available to all the syndicate's members (see pages 23 to 50).

## UNDERWRITER'S REPORT

### 2016 Year of Account

#### Capacity £13.9 million

The syndicate's business was written by way of a 10% quota share of all US property catastrophe business (other than terrorism and retrocession business) written by Syndicate 2791. Worldwide business may be written, as long as the predominant exposure is the United States.

The 2016 year closed with a profit of £2.9m distributable to members, equivalent to 20.9% of Stamp capacity, compared with the forecast range of 12.5% to 22.5%. The closing rate of exchange was US\$1.27:£1. The Reinsurance To Close (RITC) is with Syndicate 2791; following the commutation of the quota share reinsurance contract there will be no outstanding residual liability.

#### Utilisation of capacity

The final utilisation was 37% at closing rates of exchange. No reinsurance was purchased.

#### Performance review

In order to maintain the same US Dollar capacity the syndicate was rebased to £14m for 2016. As such the premium utilisation in sterling was weaker than 2015. Significant tornado activity in Texas alongside losses from Hurricane Matthew has elevated the closing ultimate net loss ratio to 27.7% at closing rates, although the syndicate still generated a reasonably healthy bottom line result. There is no impact from the 2017 catastrophic events.

#### Analysis of premium written by syndicate classification

	Gross written £'000	Net written £'000
Property reinsurance	4,876	4,876

#### Investment Return

The investment return for the period was a loss of £0.01m. The average annual return on assets held over the last three years is -0.2%.

The syndicate operates on a funds withheld basis vis-à-vis Syndicate 2791, from which it accepts its business. The contract between the syndicates provides that the investment return receivable by Syndicate 6103 follows that achieved by Syndicate 2791 on its own funds, principally the Credit for Reinsurance Trust Fund in respect of the US dollar balances. If the average balance is negative, an interest expense is calculated on the monthly average at the relevant currency six month duration Treasury Bill rate plus 1.5%. The whole of the return is treated as investment income.

#### The Effect of Exchange Rates on the 2015 Distribution Account

As these accounts are reported over the three consecutive years from 2016 during which the GBP:US dollar exchange rate has moved from an average of 1.35 to a closing rate of 1.27 at the end of 2018, this has resulted in an exchange gain of £0.2m versus the average rates over the three year period as further set out in note 8.



# MANAGING AGENT'S REPORT

continued

## 2017 Year of Account Forecast

In order to maintain the same US Dollar capacity the syndicate was rebased once again to £15.7m for 2017.

Capital providers will be well aware of the plethora of catastrophes that occurred in 2017, notably Hurricanes Harvey, Irma and Maria, as well as the Californian Wildfires; and in particular the well-documented deterioration in the Floridian loss from Hurricane Irma that shows little sign of abating.

Unsurprisingly, as a US catastrophe only writer, 6103 has been impacted by these events, but not excessively. We are projecting ultimate gross catastrophe losses of \$5.5m (last year \$5.6m), with a year-end incurred of \$5.1m (last year \$4.3m). Whilst this represents over 80 percentage points of loss ratio, the impact on Stamp is heavily diluted by the projected 33% utilisation.

The year is forecast to be a modest loss of 0% to 10% on Stamp Capacity after all expenses.

An estimate of the 2017 underwriting result as at 36 months is set out below:

	£'000
Stamp capacity	15,705
Gross premiums written	5,258
Net premiums written	5,258
Claims incurred – net of reinsurance	(5,435)
Net operating expenses	(262)
Investment return	(8)
Profit commission	–
Personal expenses	(53)
<b>Estimate of loss for the year of account after personal expenses</b>	<b>(500)</b>

Assumptions underlying the 2017 Estimated Result:

- (i) Exchange rates at 31 December 2019 will not be materially different from those at 31 December 2018.
- (ii) Investment returns attributable to 2017 during 2019 = 1.5% for US dollar and 0.5% for all other currencies.
- (iii) Claims will be paid in line with our expected development patterns.

## 2018 Overview

In September 2017 we took the decision to re-inflate Syndicate 6103 back to a 30% quota share for the 2018 year of account, in expectation that we would experience market conditions similar to 2013 (which had the same percentage cession). The thinking was that not only would 6103 be able to take advantage of a dislocated catastrophe market, the host Syndicate 2791 would also be able to deliver on its gross promises to clients, particularly on those non ceded catastrophic exposed lines (insurance, binders, risk excess, marine etc) which would otherwise be restricted by the specific cat excess of loss reinsurance book. Syndicate 6103 would resume its historic role as a necessary safety-valve for 2791.

Unfortunately the market failed to move significantly following the poor experience of 2017: indeed, by “doubling down” so readily capital providers effectively negated the opportunity to re-price business. Consequently it was very difficult for businesses like MAP, which rely on market dislocation to re-underwrite other people’s mistakes, to make any meaningful headway. After taking into account the increase in cession, gross premium volume is only up 15% over 2017, still a long way short of historic norms.

Interestingly, catastrophe incidence was similarly elevated to 2017, with hurricanes Florence and Michael impacting the US, four significant loss events in Asia, followed by a repeat of the Californian Wildfires. Projected ultimate gross losses for these events are \$20.0m, with \$12.9m incurred at year end. Once again, the year is trending to a marginal result (notwithstanding the fact that the in force book is still largely on risk until July, and could therefore be impacted by further events).

# MANAGING AGENT'S REPORT

continued

## 2019 Trading Conditions

Once again the market is proving stubbornly resistant to meaningful change, although given the fact that many of our peers have lost considerable amounts of money in catastrophe business over the last couple of years is starting to induce a certain level of angst. Commentators often lament the over-supply of Global Capital as driving sub-standard underwriting returns throughout the industry. Whereas this is undoubtedly true, to my mind the more insidious problem is the over-reliance of much of the market on third party proprietary models, particularly in the more volatile, catastrophe exposed lines of business. Time and again there is shown to be a material gap between theoretical modelled by-peril output and the harsh reality of an all-risks contract, magnified by legal and regulatory interpretation. Added to this, much of the Capital Markets operate an Agency model, whereby managers are incentivised to bet investors' money on these inadequate metrics. Until this delusional adherence to off the shelf models (often excessively optimised by the counterparty, or their intermediary) is replaced by a reasonable level of prudence, it will prove hard to escape their gravitational pull.

## Seven Year Summary of Closed Years of Account

	Note	2010	2011	2012	2013	2014	2015	2016
Syndicate allocated capacity (£m)		33.7	28.8	31.5	41.2	30.0	12.5	13.9
Number of Underwriting Members		931	859	909	997	1,039	991	975
Aggregate net premiums (£m)		19.7	19.6	24.8	19.4	9.2	4.7	4.9
<b>Results for illustrative share of £10,000</b>		%	%	%	%	%	%	%
Utilisation of capacity at premium income monitoring rates of exchange		60.5	72.3	84.1	48.8	33.0	33.3	30.0
Gross premiums written (% of illustrative share)		58.5	67.8	85.3	48.9	30.6	37.6	35.1
Net premiums (% of illustrative share)		58.5	67.8	78.8	47.0	30.6	37.6	35.1
Profit (% of gross premiums)		65.0	30.1	29.9	77.9	89.3	81.9	59.6
<b>Results for illustrative share of £10,000</b>		£	£	£	£	£	£	£
Gross premiums	1	5,850	6,783	8,526	4,889	3,058	3,755	3507
Net premiums		5,850	6,783	7,881	4,702	3,058	3,755	3507
Reinsurance to close from an earlier year of account	2	–	–	–	–	–	–	–
Net claims		(1,028)	(3,825)	(3,285)	(328)	(503)	(385)	(949)
Reinsurance to close	3	(76)	(146)	(1,273)	(47)	(5)	38	(20)
<b>Underwriting profit</b>		<b>4,746</b>	<b>2,812</b>	<b>3,323</b>	<b>4,327</b>	<b>2,550</b>	<b>3,408</b>	<b>2,538</b>
Acquisition costs	1	–	–	–	–	–	–	–
Other syndicate operating expenses, excluding personal expenses		(346)	(398)	(486)	(289)	(179)	(218)	(203)
Reinsurers' commissions and profit participations		–	–	–	–	–	–	–
Exchange movement on foreign currency translation		(159)	(85)	35	255	659	287	114
Net investment income		260	87	117	143	68	90	(9)
Illustrative personal expenses:								
Managing agent's fee	4	–	–	–	–	–	–	–
Profit commission	5	(699)	(375)	(443)	(627)	(366)	(492)	(349)
Other personal expenses	6	–	–	–	–	–	–	–
<b>Profit after illustrative personal expenses and illustrative profit commission</b>		<b>3,802</b>	<b>2,041</b>	<b>2,546</b>	<b>3,809</b>	<b>2,732</b>	<b>3,075</b>	<b>2,091</b>

1. The syndicate is not charged with brokerage costs.
2. Reinsurance to close from earlier years of account have been accepted by Syndicate 2791.
3. Reinsurance to close is stated at relevant average rates applicable or when reserves were first set for each year of account.
4. The syndicate is not charged a managing agent's fee.
5. Profit commission is reported on a pro forma basis before the application of the deficit clause brought forward.
6. The syndicate is not charged personal expenses directly but an equivalent overriding commission of 1% of gross premiums written is included in syndicate operating expenses.

## Individual Capital Assessment

When the 2016 Year of Account commenced, the syndicate was required to produce an Individual Capital Assessment (ICA) under the Individual Capital Adequacy Standards (ICAS) regime. This set the capital required to be held by the members of the syndicate. From 1 January 2016 the ICAS regime changed to Solvency II and the ICA altered to a Solvency Capital Requirement (SCR). For these underwriting year accounts the capital detailed is that which was required to be provided by the members of the 2016 Year of Account.

# MANAGING AGENT'S REPORT

---

continued

## Individual Capital Assessment continued

The capital set by each syndicate is required to reflect the risks contained within each business. Lloyd's reviews and through its Capital and Planning Group approves these assessments to ensure syndicate ICAs are appropriate and consistent across the market. Lloyd's requires an uplift to syndicate ICA's to provide a margin to meet its own financial strength, licence and ratings objectives. For the 2016 Year of Account, the uplift is 35% of the member's ICA. An ICA including the margin is known as the Economic Capital Requirement (ECR) and Lloyd's allocates the ECR required down to each individual member.

The syndicate capital assessment for the 2014 Year of Account was established using our internal Solvency II model which has been run within the ICA regime as prescribed by Lloyd's. The internal model uses sophisticated mathematical models reflecting key risks within the syndicate. The risks are principally Insurance (catastrophes, pricing and reserving), Market (equity, liquidity, currency, interest rate and spread), Credit (brokers, investment and reinsurance) and Operational.

The following table sets out the syndicate's ECR which is unaudited:

## 2016 Approved Capital

Lloyd's ECR

	2016 £m
6103	35.10

ECR capital is provided by the members of the syndicate from syndicate retained profits plus additional contributed assets held and managed by Lloyd's of London, known as Funds at Lloyd's or FAL.

## European Union business

In order to ensure continued market access to European (re)insurance business following the U.K.'s exit from the European Union, Lloyd's has established a Belgian subsidiary - Lloyd's Insurance Company S.A.

More commonly known as 'Lloyd's Brussels', this subsidiary is authorised and regulated as an insurance entity by the National Bank of Belgium and regulated by the Financial Services and Markets Authority.

Lloyd's Brussels is capitalised in accordance with Solvency II rules and is licensed to write non-life risks across the European Economic Area (EEA), the UK and Monaco.

Lloyd's Brussels benefits from Lloyd's central resources, including the Lloyd's Central Fund. As all Lloyd's Brussels policies are 100% reinsured back to Lloyd's syndicates, they are ultimately backed by Lloyd's unique capital structure, often referred to as the Chain of Security.

All European non-life business incepting and/or renewing on or after 1 January 2019 will now be placed with Lloyd's Brussels and the structure of Lloyd's Brussels enables business partners and policyholders to retain access to the underwriting expertise of the Lloyd's market via established distribution channels of brokers, coverholders, and syndicates.

Lloyd's has publicly committed that its syndicates will continue to pay all valid claims on historic policies and that before the end of 2020 all legacy EEA business will be moved to Lloyd's Brussels via a Part VII transfer.

Syndicate 6103 is currently unaffected by this subsidiary due to its wholly United States reinsurance focus. However, along with all Lloyd's syndicates it may be affected by future changes in UK-US-European passporting rules.

## Future Developments

The syndicate continues to transact United States reinsurance business that it has transacted historically.

## Disclosure of Information to the Auditors

So far as each person who was a director of the managing agent at the date of approving this report is aware, there is no relevant audit information, being information needed by the auditor in connection with its report, of which the auditor is unaware. Having made enquiries of fellow directors of the agency and the syndicate's auditor, each director has taken all the steps that he/she is obliged to take as a director in order to make himself/herself aware of any relevant audit information and to establish that the auditor is aware of that information.

This managing agent's report was approved by the Board of Managing Agency Partners Limited on 19 March 2019 and signed on its behalf by:

**R K Trubshaw**

*Active Underwriter*

Managing Agency Partners Limited

19 March 2019

## STATEMENT OF MANAGING AGENT'S RESPONSIBILITIES

---

The Insurance Accounts Directive (Lloyd's Syndicates and Aggregate Accounts) Regulations 2008 ('the Lloyd's Regulations') require the managing agent to prepare syndicate underwriting year accounts for each syndicate in respect of any underwriting year which is being closed by reinsurance to close at 31 December. Detailed requirements in respect of the underwriting year accounts are set out in the Lloyd's Syndicate Accounting Byelaw (No. 8 of 2005).

The managing agent must prepare the syndicate underwriting year accounts which give a true and fair view of the result of the closed year of account.

In preparing the syndicate underwriting year accounts, the managing agent is required to:

- select suitable accounting policies which are applied consistently and, where there are items which affect more than one year of account, ensure a treatment which is equitable as between the members of the syndicate affected. In particular, the amount charged by way of premium in respect of the reinsurance to close shall, where the reinsuring members and reinsured members are members of the same syndicate for different years of account, be equitable as between them, having regard to the nature and amount of the liabilities reinsured;
- take into account all income and charges relating to a closed year of account without regard to the date of receipt or payment;
- make judgements and estimates that are reasonable and prudent; and
- state whether applicable UK accounting standards have been followed, subject to any material departures disclosed and explained in these underwriting year accounts.

The managing agent is responsible for keeping proper accounting records which disclose with reasonable accuracy at any time the financial position of the syndicate and enable it to ensure that the syndicate underwriting year accounts comply with the Lloyd's Regulations. It is also responsible for safeguarding the assets of the syndicate and hence for taking reasonable steps for the prevention and detection of fraud and other irregularities.

# INDEPENDENT AUDITOR'S REPORT

---

to the Members of Syndicate 6103

## Independent auditor's report to the members of Syndicate 6103 – 2016 closed year of account

Report on the audit of the syndicate underwriting year accounts for the 2016 closed year of account for the three years ended 31 December 2018.

### Opinion

In our opinion the syndicate underwriting year accounts of Syndicate 6103 (the 'syndicate'):

- give a true and fair view of the profit for the 2016 closed year of account;
- have been properly prepared in accordance with United Kingdom Generally Accepted Accounting Practice including Financial Reporting Standard 102 "The Financial Reporting Standard applicable in the UK and Republic of Ireland"; and
- have been prepared in accordance with the requirements of The Insurance Accounts Directive (Lloyd's Syndicate and Aggregate Accounts) Regulations 2008 and in accordance with the Lloyd's Syndicate Accounting Byelaw (no. 8 of 2005).

We have audited the syndicate underwriting year accounts which comprise:

- the income statement;
- the statement of comprehensive income;
- the statement of financial position;
- the statement of cash flows; and
- the related notes 1 to 14.

The financial reporting framework that has been applied in their preparation is applicable law and United Kingdom Accounting Standards, including Financial Reporting Standard 102 "the Financial Reporting Standard applicable in the UK and Republic of Ireland", the Insurance Accounts Directive (Lloyd's Syndicate and Aggregate Accounts) Regulations 2008 and the Lloyd's Syndicate Accounting Byelaw (no. 8 of 2005).

### Basis for opinion

We conducted our audit in accordance with International Standards on Auditing (UK) (ISAs (UK)) and applicable law. Our responsibilities under those standards are further described in the auditor's responsibilities for the audit of the syndicate underwriting year accounts section of our report.

We are independent of the syndicate in accordance with the ethical requirements that are relevant to our audit of the syndicate underwriting year accounts in the UK, including the Financial Reporting Council's (the 'FRC's') Ethical Standard, and we have fulfilled our other ethical responsibilities in accordance with these requirements. We believe that the audit evidence we have obtained is sufficient and appropriate to provide a basis for our opinion.

### Other information

The managing agent is responsible for the other information. The other information comprises the information included in the annual report, other than the syndicate underwriting year accounts and our auditor's report thereon. Our opinion on the syndicate underwriting year accounts does not cover the other information and we do not express any form of assurance conclusion thereon.

In connection with our audit of the syndicate underwriting year accounts, our responsibility is to read the other information and, in doing so, consider whether the other information is materially inconsistent with the syndicate underwriting year accounts or our knowledge obtained in the audit or otherwise appears to be materially misstated. If we identify such material inconsistencies or apparent material misstatements, we are required to determine whether there is a material misstatement in the syndicate underwriting year accounts or a material misstatement of the other information. If, based on the work we have performed, we conclude that there is a material misstatement of this other information, we are required to report that fact.

We have nothing to report in respect of these matters.

# INDEPENDENT AUDITOR'S REPORT

---

continued

## **Responsibilities of managing agent**

As explained more fully in the managing agent's responsibilities statement, the managing agent is responsible for the preparation of the syndicate underwriting year accounts under the Insurance Accounts Directive (Lloyd's Syndicate and Aggregate Accounts) Regulations 2008 and in accordance with the Lloyd's Syndicate Accounting Byelaw (no. 8 of 2005), and for being satisfied that they give a true and fair view of the result, and for such internal control as the managing agent determines is necessary to enable the preparation of syndicate underwriting year accounts that are free from material misstatement, whether due to fraud or error.

In preparing the syndicate underwriting accounts, the managing agent is responsible for assessing the syndicate's ability to realise its assets and discharge its liabilities in the normal course of business, disclosing, as applicable, any matters that impact its ability to do so.

## **Auditor's responsibilities for the audit of the syndicate underwriting year accounts**

Our objectives are to obtain reasonable assurance about whether the syndicate underwriting year accounts as a whole are free from material misstatement, whether due to fraud or error, and to issue an auditor's report that includes our opinion. Reasonable assurance is a high level of assurance, but is not a guarantee that an audit conducted in accordance with ISAs (UK) will always detect a material misstatement when it exists. Misstatements can arise from fraud or error and are considered material if, individually or in the aggregate, they could reasonably be expected to influence the economic decisions of users taken on the basis of these syndicate underwriting year accounts.

A further description of our responsibilities for the audit of the syndicate underwriting year accounts is located on the FRC's website at: [www.frc.org.uk/auditorsresponsibilities](http://www.frc.org.uk/auditorsresponsibilities). This description forms part of our auditor's report.

## **Report on other legal and regulatory requirements**

### **Matters on which we are required to report by exception**

Under the Lloyd's Syndicate Accounting Byelaw (no.8 of 2005) we are required to report in respect of the following matters if, in our opinion:

- the managing agent in respect of the syndicate has not kept proper accounting records; or
- the syndicate underwriting year accounts are not in agreement with the accounting records.

We have nothing to report in respect of these matters.

## **Use of our report**

This report is made solely to the syndicate's members, as a body, in accordance with regulation 6 of the Insurance Accounts Directive (Lloyd's Syndicate and Aggregate Accounts) Regulations 2008. Our audit work has been undertaken so that we might state to the syndicate's members those matters we are required to state to them in an auditor's report and for no other purpose. To the fullest extent permitted by law, we do not accept or assume responsibility to anyone other than the syndicate's members as a body, for our audit work, for this report, or for the opinions we have formed.

Andrew Downes (Senior statutory auditor)

For and on behalf of Deloitte LLP

Statutory Auditor

London, UK

19 March 2019

## INCOME STATEMENT TECHNICAL ACCOUNT – GENERAL BUSINESS

2016 Closed Year of Account for the three years ended 31 December 2018

	Note	2016 £'000
<b>Syndicate allocated capacity</b>		13,905
<b>Earned premiums, net of reinsurance:</b>		
Gross premiums written	3	4,876
Outward reinsurance premiums		-
<b>Earned premiums, net of reinsurance</b>		4,876
<b>Allocated investment return transferred from the non-technical account</b>		(12)
<b>Claims incurred, net of reinsurance</b>		
Claims paid		
Gross amount		(1,319)
<b>Reinsurance to close premium payable, net of reinsurance</b>	4,5	(28)
<b>Net operating expenses</b>	6	(767)
<b>Balance on the technical account – general business</b>	9	2,750

## INCOME STATEMENT NON-TECHNICAL ACCOUNT

2016 Closed Year of Account for the three years ended 31 December 2018

	Note	2016 £'000
<b>Balance on the general business technical account</b>		2,750
Investment income	10	(12)
Allocated investment return transferred to general business technical account		12
Non-technical account foreign exchange	8	1
<b>Profit for the 2016 closed year of account excluding other comprehensive income</b>		2,751

## STATEMENT OF COMPREHENSIVE INCOME

2016 Closed Year of Account for the three years ended 31 December 2018

	Note	2016 £'000
<b>Profit for the 2016 closed year of account excluding other comprehensive income</b>		2,751
Exchange differences on foreign currency translation	8	157
<b>Profit for the 2016 closed year of account including other comprehensive income being profit distributed to members</b>		2,908

## STATEMENT OF FINANCIAL POSITION

2016 Closed Year of Account for the three years ended 31 December 2018

	Note	2016 £'000
<b>Assets</b>		
Debtors	11	5,267
Total assets		5,267
<b>Liabilities</b>		
Amounts due to members	12	2,908
Reinsurance to close premium payable to close the account – gross amount	5	53
Other creditors	13	2,306
Total liabilities		5,267

The financial statements on pages 12 to 22 were approved by the Board of Managing Agency Partners Limited on 19 March 2019 and were signed on its behalf by:

**R K Trubshaw**  
Active Underwriter

**R J Sumner**  
Finance Director

19 March 2019



## STATEMENT OF CASH FLOWS

2016 Closed Year of Account for the three years ended 31 December 2018

	Note	2016 £'000
<b>Operating profit on ordinary activities</b>		2,751
Movement in gross technical provisions		53
Movement in debtors		(5,267)
Movement in creditors		2,306
Investment return		12
Exchange differences on foreign currency translation		157
Net cash inflow from operating activities		12
<b>Cash flows from investing activities</b>		
Income accrued from 2791		(12)
Increase / (decrease) in cash and cash equivalents		-
Cash and cash equivalents at 1 January		-
<b>Cash and cash equivalents at 31 December</b>		-

The syndicate operates on a funds withheld basis. Consequently there are no movements in cash, portfolio investments and financing.

# NOTES TO THE ACCOUNTS

---

## 2016 Closed Year of Account for the three years ended 31 December 2018

### 1.1 Basis of Preparation and Statement of Compliance

These financial statements have been prepared under the 2008 Regulations and in accordance with the Syndicate Accounting Byelaw (No.8 of 2005) and applicable accounting standards in the United Kingdom. Financial Reporting Standard 102 'The Financial Reporting Standard applicable in the UK and Republic of Ireland' (FRS 102) and Financial Reporting Standard 103 'Insurance Contracts' (FRS 103) have been applied.

As permitted by FRS 103 the syndicate continues to apply the existing accounting policies that were applied prior to this standard for its insurance contracts.

The Lloyd's Syndicate Accounting Byelaw (No. 8 of 2005) requires the aggregation of movements in each of the three calendar years for any Underwriting Year of Account. For 2016's Underwriting Year Distribution Account each calendar year result is aggregated using the relevant years' average rate for each item in the income statement.

The financial statements are prepared under the historical cost convention.

Members participate on a syndicate by reference to a year of account and each syndicate year of account is a separate annual venture. These accounts relate to the 2016 year of account which has been closed by reinsurance to close at 31 December 2018. Consequently, the statement of financial position represents the assets and liabilities of the 2016 year of account with the income statement and the statement of cash flows reflecting the transactions for that year of account during the three year period until closure.

As each syndicate year of account is a separate annual venture, comparatives are not required to be disclosed.

#### **Reinsurance to close**

A Reinsurance to Close (RITC) is a reinsurance which closes a year of account and transfers the responsibility for discharging all the liabilities that attach to that year of account (and any year of account closed into that year) plus the right to any income due to the closing year of account into an open year of account of the same or a different syndicate in return for a premium.

Effective at each year-end 31 December, the RITC process means that all assets and liabilities have been transferred to a reinsuring year of account. To this extent, the risks that the syndicate is exposed to in respect of the reported financial position and financial performance are significantly less than those relating to the open years of account as disclosed in the Syndicate Annual Accounts. Accordingly, these underwriting year accounts do not include the associated risk disclosures required by section 34 of FRS 102 and section 4 of FRS 103. Full disclosures relating to these risks are provided in the main Annual Accounts of the Syndicate. In addition, certain other disclosure requirements under FRS 102 and FRS 103, such as the disclosure of a Statement of Changes in Members' Balances, have not been provided as we believe they are not required for a proper understanding of the underwriting year accounts.

The functional currency is US dollars but the financial statements are prepared in sterling which is the presentational currency of the syndicate and rounded to the nearest £'000.

Syndicate 6103 operates on a funds withheld basis with Syndicate 2791 which cedes business under a quota-share treaty to Syndicate 6103. Syndicate 2791 is also managed by the managing agent, MAP. Syndicate 6103 holds no cash or investments. All the syndicate's funds are held by Syndicate 2791 which makes payments of liabilities on Syndicate 6103's behalf. Debtors and creditors between the syndicates are grossed up in the syndicate statement of financial position and upon the closure of each year of account, normally after 36 months, the assets and liabilities of that closing year are netted off as part of the commutation settlement with Syndicate 2791.

### 1.2 Judgements and Key Sources of Estimation Uncertainty

The preparation of the financial statements require management to make judgements, estimates and assumptions that affect the amounts reported for assets and liabilities as at the statement of financial position date and the amounts reported for revenues and expenses during the year.

However, the nature of estimation means that actual outcomes could differ from those estimates.

It should however be noted that upon RITC the uncertainties are transferred to the accepting year of account of Syndicate 2791.

The following are the syndicate's key sources of estimation uncertainty:

#### **Insurance contract technical provisions (reinsurance to close premium payable)**

For insurance contracts, estimates have to be made both for the expected ultimate cost of claims reported at the reporting date and for the expected ultimate cost of claims incurred but not reported (IBNR). It can take a significant period of time before the ultimate claims cost can be established with certainty and for some types of policies, IBNR claims can form the majority of the liability in the statement of financial position.

The ultimate cost of outstanding claims is estimated by using a range of standard actuarial claims projection techniques, such as Chain Ladder, Bornhutter-Ferguson methods and individual reserving at contract level.

# NOTES TO THE ACCOUNTS

---

continued

## 1.2 Judgements and Key Sources of Estimation Uncertainty *continued*

### *Insurance contract technical provisions (reinsurance to close premium payable) continued*

The main assumption underlying these techniques is that past claims development experience can be used to project future claims development and hence ultimate claims costs. The provision for claims outstanding is assessed on an individual case basis and is based on the estimated ultimate cost of all claims notified but not settled by the statement of financial position date, together with the provision for related claims handling costs. The provision also includes the estimated cost of claims IBNR at the statement of financial position date based on statistical methods.

These methods generally involve projecting from past experience of the development of claims over time to form a view of the likely ultimate claims to be experienced for more recent underwriting, having regard to variations in the business accepted and the underlying terms and conditions. For the most recent years, where a high degree of volatility arises from projections, estimates may be based in part on output from pricing and other models of the business accepted and assessments of underwriting conditions.

The two most critical assumptions as regards claims provisions are that the past is a reasonable predictor of the likely level of claims development and that the rating and other models used for current business are fair reflections of the likely level of ultimate claims to be incurred.

The directors consider the provisions for gross claims and related reinsurance recoveries are fairly stated on the basis of the information currently available to them. However, the ultimate liability will vary as a result of subsequent information and events and this may result in significant adjustments to the amounts provided. Adjustments to the amounts of claims provisions established in prior years are reflected in the financial statements for the period in which the adjustments are made. In addition, where losses are not settled until several years after the expiration of the policy in question, the estimates are considered to be more volatile and consequently are subjected to additional management judgemental prudence adjustments. The methods used, and the estimates made, are reviewed regularly.

Where the amount of any material salvage and subrogation recoveries is separately identified it is reported as an asset.

### *Estimates of future premiums*

For certain insurance contracts, premium is initially recognised based on estimates of ultimate premiums. These estimates are judgemental and the main assumption underlying these estimates is that past premium development can be used to project future premium development.

Estimates include an element of judgement with regard to the level of claims affected future premiums receivable by the syndicate. The methods used for assessing future premiums generally involve projecting from past experience, based on the development of claims and the related inwards premiums receivable against these claims. The directors consider the estimates of gross future premium are fairly stated on the basis of the information available currently to them. However, the ultimate receivable will vary as a result of subsequent information or events and this may result in significant adjustments.

### *Expense provisions – Unallocated loss adjustment provisions and legal provisions*

Estimates of future expenses to be incurred in respect of settlement transaction costs and administering or adjusting expenses in respect of claim provisions are made at each statement of financial position date if applicable. The main assumptions underlying these provisions are that direct claim administration costs are as budgeted, inflation rates will be in line with historical rates and claim payment patterns reflect historical experience by line of business. Expense provisions are also made in respect of legal disputes anticipated to be incurred in the normal course of business defending the syndicate position. These provisions are based on historical average costs or direct individual case estimates.

Changes in assumptions, quantum or complexity of future claims can affect the value of these provisions.

## 2. Accounting Policies

The underwriting accounts for each year of account are normally kept open for three years before the result on that year is determined. At the end of the three year period, outstanding liabilities can normally be determined with sufficient accuracy to permit the year of account to be closed by payment of a reinsurance to close premium.

### *Insurance contracts*

An insurance contract (including inwards reinsurance contract) is defined as a contract containing significant insurance risk. Insurance risk is considered significant if, and only if, an insured event could cause the syndicate to pay significant additional benefits in any scenario. Such contracts remain insurance contracts until all rights and obligations are extinguished or expire.

# NOTES TO THE ACCOUNTS

---

continued

## 2. Accounting Policies *continued*

### **Premiums written**

Premiums written comprise premiums on contracts inception during the financial year of account. Estimates are made for pipeline premiums, representing amounts due to the syndicate not yet notified received at the statement of financial position date.

Premiums are treated as fully earned and are disclosed before the deduction of taxes or duties levied on them.

### **Acquisition costs**

The syndicate is not charged with acquisition costs and has no deferred acquisition costs.

### **Reinsurance premium ceded**

Outwards reinsurance premiums are accounted for in the year of inception. Premiums ceded to reinstate reinsurance cover or additional premiums payable on loss are recognised when they may be assessed with reasonable certainty. The syndicate has not purchased any reinsurance for the 2016 year of account.

### **Claims paid and related recoveries**

Gross claims paid include internal and external claims settlement expenses and are attributed to the same year of account as the original premium for the underlying policy. Reinstatement premiums receivable in the event of a claim being made are charged to the same year of account as that to which the claim is debited. As the syndicate operates on a funds withheld basis it cannot make loss fund advance payments.

### **Reinsurance to close premium payable**

The reinsurance to close premium is determined on the basis of estimated outstanding liabilities and related claims settlement costs (including claims incurred but not reported) net of any estimated collectable reinsurance recoveries relating to the closed year of account.

The estimate of claims outstanding is assessed on an individual case and class basis, as appropriate, and is based on the estimated ultimate cost of all claims notified but not settled by the statement of financial position date, together with the provision for related claims handling costs. It also includes the estimated cost of claims IBNR at the statement of financial position date based on statistical methods.

### **Future unallocated loss adjustment expenses**

An accrual for all future unallocated loss adjustment expenses ('ULAE') is made if applicable. The ULAE is comprised of those costs which are related to the settlement of earned claims but which are not directly attributable to individual claims. ULAE expenses are undiscounted and include the expenses of managing the run-off of the business on the basis the business is a going concern. Costs of administration of the reinsurance programme are included in the gross ULAE. Separate reserves are established for each year of account.

### **Legal provisions**

The syndicate may be subject to legal disputes, in the normal course of business. Provisions for such events and their related costs are recognised where there is an expected present obligation relating to a past event or evidence exists of the requirement for a general provision that can be measured reliably and it is probable that an outflow of economic benefit will be required to settle an obligation. The directors of the managing agent do not expect the outcome of these claims, either individually or in aggregate, to have a material effect upon the syndicate's operations or financial position. As allowed by FRS 102, further disclosure has not been given as it may seriously prejudice the outcome of any legal proceedings.

### **Insurance receivables and payables**

Insurance receivables and payables are recognised when due and measured on initial recognition at the fair value of the consideration received. They are derecognised when the obligation is settled, cancelled or expired.

### **Bad debt**

Bad debts are provided for only where specific information becomes available to suggest a debtor may be unable or unwilling to settle its debts to the syndicate. Specific information may be directly attributed to the debtor company or may be indirect information from a rating agency or other source. The provision is calculated on a case by case basis.

### **Foreign currency translation**

Financial Reporting Standard 102 requires each entity to identify its functional currency and a presentational currency. The functional currency is identified as the currency of the primary economic environment in which the entity operates. The functional currency of this syndicate is US dollars as the majority of the underwriting business, cash flows and expenses are in US dollars. We have chosen to maintain our presentational currency as sterling as the syndicate is based in the UK, complies with UK reporting standards and enables simpler comparisons to other Lloyd's insurance syndicates.

The syndicate records transactions in four settlement currencies being sterling, US dollars, Canadian dollars and Euros and when reported these currencies are translated in the income statement at the average rates of exchange for each calendar year of the 36 month period respectively. Underwriting transactions denominated in other foreign currencies are included at the rate of exchange ruling at the date the transaction is processed.

# NOTES TO THE ACCOUNTS

continued

## 2. Accounting Policies *continued*

### *Foreign currency translation continued*

As permitted by FRS 103, the syndicate has continued with its existing accounting policy to treat non-monetary assets and liabilities arising from insurance contracts (which include items such as unearned premiums and deferred acquisition costs) the same as monetary assets and liabilities. Consequently, all assets and liabilities denominated in foreign currencies are translated at the rate of exchange at the statement of financial position date or, if appropriate, at the forward contract rate.

Exchange differences from the functional currency (US dollars) arising from the retranslation of opening balances and between average and year-end rates to the presentational currency are included in the statement of comprehensive income.

All other exchange differences are included in the general business non-technical account.

Where Canadian dollars or Euros are sold or bought relating to the profit or loss of the closed underwriting account after 36 months, any exchange profit or loss arising is reflected in the underwriting account into which the liabilities of that year have been reinsured. Where US dollars relating to the profit or loss of a closed underwriting account are bought or sold by the syndicate on behalf of the members on that year, any exchange profit or loss accrues to those members.

The following rates of exchange to sterling have been used in the preparation of these accounts.

	Year end rate 2016	Average rates during		
		2018	2017	2016
USD	1.27	1.34	1.29	1.35
CAD	1.74	1.73	1.67	1.79
EUR	1.11	1.13	1.14	1.22

### *Investments*

The syndicate does not hold any investments or derivatives.

### *Investment return*

Investment return comprises an allocation, calculated on the monthly average of the Total Funded Paid Experience balance with Syndicate 2791 (equivalent to the premiums received, claims paid, ceding commission, interest expenses and income). This return is equal to the rate of investment return on its Credit for Reinsurance Fund for US dollar denominated balances achieved by Syndicate 2791 on its invested funds during the relevant month. Interest on other currency positive balances is credited at rates achieved by Syndicate 2791 on those currencies for the relevant month.

If the average balance is negative, an interest expense is calculated on the monthly average at the relevant currency six month duration Treasury Bill rate plus 1.5%. The whole of the return is treated as investment income.

### *Allocation of investment return*

Investment return is initially recorded in the non-technical account. A transfer is made from the non-technical account to the general business technical account. Investment return has been wholly allocated to the technical account as all investments are generated by insurance related assets.

### *Operating expenses*

All current and future syndicate expenses at the statement of financial position date, including audit fees, are charged to and borne by Syndicate 2791 for which the syndicate is charged a ceding commission of 5% of gross premiums written. Personal expenses (Lloyd's subscriptions and central fund), which are charged to Syndicate 2791 are covered by an overriding commission of 1% of gross premiums written.

### *Taxation*

Under Schedule 19 of the Finance Act 1993 managing agents are not required to deduct basic rate income tax from trading income. In addition, all UK basic rate income tax deducted from syndicate investment income is recoverable by managing agents and consequently the distribution made to members or their members' agents is gross of tax.

No provision has been made for any United States Federal Income Tax payable on underwriting results or investment earnings. Any payments on account made by the syndicate during the year are included in the statement of financial position under the heading 'debtors'. No provision has been made for any overseas tax payable by members on underwriting results.

### *Profit commission*

Profit commission is charged by the managing agent at a rate of 15%. This is charged to the syndicate as incurred on an earned basis but does not become payable until after the year of account closes, normally at 36 months.

# NOTES TO THE ACCOUNTS

continued

### 3. Segmental Analysis

All the syndicate's business, as set out in the technical account, is classified as reinsurance accepted and all premiums were concluded in the UK. The geographical situs of the risks is principally the USA.

### 4. Movement in Underwriting Reserves

The following table reconciles the reinsurance to close in the Income Statement to the Statement of Financial Position:

	Reserves at average rates £'000	Exchange to closing rate £'000	Closing RITC £'000
Change in three year period (2016 pure)	(28)	(25)	(53)
	(28)	(25)	(53)

### 5. Reinsurance to Close Premium Payable

	2016 pure £'000
Gross and net outstanding claims	28
Provision for gross and net claims incurred but not reported	25
<b>Net premium for reinsurance to close</b>	<b>53</b>

The reinsurance to close is effected to the 2017 year of account of Syndicate 2791.

### 6. Net Operating Expenses

	£'000
Outwards profit commission	(485)
Other administrative expenses	(282)
	(767)

Other administrative expenses comprise Lloyd's subscriptions, central fund contributions and the ceding commission payable to Syndicate 2791 in accordance with the terms of the contract. All other syndicate expenses, including audit fees, are charged to and borne by Syndicate 2791 for which the syndicate is charged a ceding commission of 5% of gross premiums written. Personal expenses are also charged to Syndicate 2791 but these are covered by an equivalent charge of 1% of gross premiums written.

	6103 £'000
The ceding commission within the administrative expenses include:	
Auditors' remuneration from Deloitte LLP during the calendar year 1st Jan 2018 to 31st Dec 2018	
Fees for the audit of the syndicate	7
Audit-related assurance	10
Other non-audit services	–
	17

	6103 £'000
The ceding commission within the administrative expenses include:	
Auditors' remuneration from Ernst & Young LLP during the period 1st Jan 2016 to 31st Dec 2017	
Fees for the audit of the syndicate	3
Audit-related assurance	3
Other non-audit services	3
	9

# NOTES TO THE ACCOUNTS

continued

## 6. Net Operating Expenses *continued*

Total Auditors' remuneration for the three year period 1st Jan 2016 to 31st Dec 2018	
Fees for the audit of the syndicate	10
Audit-related assurance	13
Other non-audit services	3
	<hr/>
	26

Audit related assurance includes reporting required by law and regulation, reviews of interim financial information and reporting on regulatory returns.

Non-audit service fees were incurred by syndicate actuaries employed by the former auditors Ernst & Young LLP. These fees relate to actuarial valuation services and for the provision of the Syndicate Actuarial Opinions (SAO) to Lloyd's and HMRC.

## 7. Staff Numbers and Costs

All staff are employed by the managing agent. No recharge of payroll costs or in respect of directors' remuneration is made specifically to the syndicate – all such charges are made to Syndicate 2791 and covered by the ceding commission. Profit related remuneration in respect of all directors and staff is wholly paid and borne by the managing agent.

## 8. Exchange Gains and Losses

Exchange differences on foreign currency translation arise as follows:

	£'000
On 2016 balances brought forward at 1 January 2018: from opening to closing rates	163
On transactions during 2018: from average to year end rates	(5)
	<hr/>
	158
Represented by:	
Non-technical account foreign exchange	1
Exchange differences on foreign currency translation	157
	<hr/>
	158

## 9. Balance on the Technical Account – General Business

All income and expenses relate to the 2016 pure year of account.

## 10. Investment Income

	£'000
Investment income	(12)

## 11. Debtors

	£'000
Arising out of reinsurance operations	5,165
Members' agents' fees advances	102
Non-standard personal expenses due from/(to) members	-
	<hr/>
	5,267

All debtors are due from Syndicate 2791 and, as the syndicate operates on a funds withheld basis, are settled on closure of the account.

## 12. Amounts Due to Members

	£'000
Profit for the 2016 closed year of account due to members at 31 December 2018	2,908

# NOTES TO THE ACCOUNTS

continued

## 13. Other Creditors

	£'000
Arising out of reinsurance operations	1,636
Profit commissions	513
Inter-syndicate loan	157
	<u>2,306</u>

All creditors are payable to Syndicate 2791 and, as the syndicate operates on a funds withheld basis, are settled on closure of the account.

## 14. Related Parties

All the syndicate's transactions, including the reinsurance to close, are with or via Syndicate 2791, which is also managed by the managing agent, MAP.

All business ceded by Syndicate 2791 is accepted on an arm's length basis and the main terms of the reinsurance contract are set out in the Report of the Directors of the Managing Agent.

The managing agent, MAP, is a wholly owned subsidiary of Managing Agency Partners Holdings Limited, the equity of which is 90.1% owned by MAP Equity Limited, a company that is owned by an employee share trust and the staff of the managing agency and syndicate.

The following transactions between the syndicates occurred for the 2016 year of account:

	£'000
Premiums ceded	4,876
Paid claims recovered	(1,319)
Ceding commission	(233)
Overriding commission	(49)
Investment income receivable	(12)
Reinsurance to close premium	(28)
Profit commission payable	513

All balance sheet items are with Syndicate 2791 and the net balance owed by Syndicate 2791 to Syndicate 6103 at the end of the period is £2.9m and will be settled through the Lloyd's distribution process.

The directors' interests in the ordinary share capital of MAP Equity Limited, which has an issued share capital of 250,000 £1 shares, at the statement of financial position date were as follows:

	A Shares (voting)	B Shares (non-voting)
R K Trubshaw	33,000	-
A Kong	22,000	-
J D Denoon Duncan	-	8,333
P Langridge	-	2,500
C J Smelt	5,000	2,500
R J Sumner	-	10,000

Messrs. Shipley, Denoon Duncan, Kong, Trubshaw, Sumner and Smelt, or their related parties, participate on Syndicate 6103 via a dedicated, but unaligned to the managing agent, corporate member Nomina No. 208 LLP.

Nomina No. 208 LLP commenced underwriting on the 2007 year of account. For the 2016 year of account Nomina No. 208 LLP provided £0.7m of capacity on Syndicate 6103 representing 4.77% of capacity. MAP has no direct interest in the share capital of Nomina No. 208 LLP.

Messrs. Shipley, Kong, Trubshaw, Sumner and Smelt, or their related parties, also participate on Syndicate 6103 via MAP Capital Limited (MCL) which commenced underwriting on the 2014 year of account. For the 2016 year of account MCL provided £1.29m of capacity on Syndicate 6103 representing 9.26% of capacity.

Profit commission of £0.5m (at closing rates of exchange) is due to MAP in respect of the profit of the 2016 closed year. There are no other transactions or arrangements requiring disclosure.



This page has been intentionally left blank

# SYNDICATE 6103

---

Annual Report and Accounts  
31 December 2018



## DIRECTORS AND ADMINISTRATION

---

### MANAGING AGENT

#### Managing Agent

Managing Agency Partners Limited (MAP)

#### Directors

K Allchorne (Non-executive)

C E Dandridge (Non-executive)

J D Denoon Duncan

A S Foote (Non-executive)

T P Froehlich (Non-executive)

A Kong

P Langridge

A J T Milligan (Non-executive resigned 31 October 2018)

D E S Shipley (Non-executive Chairman)

C J Smelt

R J Sumner

R K Trubshaw (Active Underwriter)

#### Company Secretary

P Langridge

#### Managing Agent's Registered Office

Fitzwilliam House

10 St. Mary Axe

London

EC3A 8EN

#### Managing Agent's Registration

Registered in England; number: 03985640

### SYNDICATE

#### Active Underwriter

R K Trubshaw

#### Registered Auditor

Deloitte LLP

Hill House

1 Little New Street

London

EC4A 3TR

## MANAGING AGENT'S REPORT

The directors of the managing agent present their report for the year ended 31 December 2018. The principal activity of the syndicate is that of writing reinsurance business.

This annual report is prepared using the annual basis of accounting as required by the Insurance Accounts Directive (Lloyd's Syndicate and Aggregate Accounts) Regulations 2008 ('the 2008 Regulations'), FRS 102 and FRS 103 being applicable UK GAAP accounting standards, and in accordance with the provisions of Schedule 3 of the Large and Medium-sized Companies and Groups (Accounts and Reports) Regulations relating to insurance companies.

Separate underwriting year accounts for the closed 2016 year of account are attached to these accounts in the section headed Underwriting Year Distribution Accounts (pages 4 to 21).

The syndicate commenced underwriting for the 2007 year of account. All 2015 and prior years have been reinsured into Syndicate 2791. For the 2016 & 2017 years of account its business was written by way of a 10% quota share and for 2018 this increased to 30% of all US property catastrophe business (other than terrorism and retrocession business) written by Syndicate 2791. Worldwide business may be written, as long as the predominant exposure is the United States.

The syndicate is charged a 5% ceding commission and an overriding commission of up to 1% of gross premiums written under the contract, to cover administration expenses, Lloyd's levies and subscriptions borne by Syndicate 2791. The syndicate does not pay any brokerage costs. A profit commission of 15% of any underwriting profit is payable to the managing agent. The syndicate has not purchased any reinsurance protection for the 2014 year of account onwards. The maximum net exposure appetite is managed to 125% of capacity, after reinstatement premium, in any one of Lloyd's mandated Realistic Disaster Scenarios.

### UNDERWRITER'S REPORT

#### A Review of the Calendar Year Result

These financial statements are prepared focusing on the calendar year results under UK Generally Accepted Accounting Practice (GAAP) for insurance companies.

Due to the significant catastrophic activity in the US during the year, the 2018 calendar year produced an annually accounted loss of £1.5m (2016: loss of £0.3m) on net earned premiums of £16.2m (2017: £5.1m). All the syndicate's business comprises US property catastrophe risks. The net combined ratio was 109.0% (2017: 108.3%).

#### Movement on underwriting years of account during the 2018 calendar year

	2016 £'000	2017 £'000	2018 £'000	Total £'000	2017 £'000
Gross written premium	(13)	78	17,175	<b>17,240</b>	5,098
Net premium earned	(12)	433	15,802	<b>16,223</b>	5,109
Net claims incurred	(57)	(219)	(16,434)	<b>(16,710)</b>	(5,158)
Operating expenses	27	(5)	(998)	<b>(976)</b>	(375)
Investment (loss)/income	(48)	(11)	47	<b>(12)</b>	157
Non-technical account foreign exchange gains and (losses)	2	2	4	<b>8</b>	(6)
Annual accounted profit/(loss)	(88)	200	(1,579)	<b>(1,467)</b>	(273)
Currency translation differences	173	(31)	(87)	<b>55</b>	(543)
<b>Total comprehensive income</b>	<b>85</b>	<b>169</b>	<b>(1,666)</b>	<b>(1,412)</b>	<b>(816)</b>
As previously reported	2,823	(660)	-	2,163	6,812
<b>Cumulative pure year result</b>	<b>2,908</b>	<b>(491)</b>	<b>(1,666)</b>	<b>751</b>	<b>5,996</b>
Net annual accounting ratios:					
Claims ratio				<b>103.0%</b>	101.0%
Expense ratio				<b>6.0%</b>	7.3%
Combined ratio				<b>109.0%</b>	108.3%

For a catastrophe only syndicate with no reinsurance protection this is a credible result and shows how the CAT aggressive exposure is tightly monitored.

# MANAGING AGENT'S REPORT

continued

## UNDERWRITER'S REPORT *continued*

### A Review of the Calendar Year Result *continued*

The written premium in the calendar year all falls within the property reinsurance classification maintained by the syndicate.

	2018	2018	2018	2018
	Gross written	Net written	Net earned	Underwriting
	£'000	£'000	£'000	(loss)
				£'000
Property reinsurance	17,240	17,240	16,223	(1,467)

	2017	2017	2017	2017
	Gross written	Net written	Net earned	Underwriting
	£'000	£'000	£'000	(loss)
				£'000
Property reinsurance	5,098	5,098	5,109	(273)

There are no non-financial key performance indicators relevant to the specific circumstances of this syndicate.

During 2018, the syndicate has accepted premiums amounting to £17.2m (2017: £5.1m) and paid ceding commission of £0.8m (2017: £0.3m) and overriding commission of £159k (2017: £46k) to Syndicate 2791. All the syndicate's funds are held by Syndicate 2791 which makes payments of liabilities on the syndicate's behalf. The syndicate has been debited with £12k (2017: credit of £157k) in respect of interest on funds held by/ owed to Syndicate 2791. The rates of interest credited on credit balances to the syndicate are those achieved by Syndicate 2791 on its own funds and the rates charged on debit balances are relevant currency six month duration Treasury Bills rates +1.5%.

### 2018 Overview

In September 2017 we took the decision to re-inflate Syndicate 6103 back to a 30% quota share for the 2018 year of account, in expectation that we would experience market conditions similar to 2013 (which had the same percentage cession). The thinking was that not only would 6103 be able to take advantage of a dislocated catastrophe market, the host Syndicate 2791 would also be able to deliver on its gross promises to clients, particularly on those non ceded catastrophic exposed lines (insurance, binders, risk excess, marine etc) which would otherwise be restricted by the specific cat excess of loss reinsurance book. Syndicate 6103 would resume its historic role as a necessary safety-valve for 2791.

Unfortunately the market failed to move significantly following the poor experience of 2017: indeed, by "doubling down" so readily capital providers effectively negated the opportunity to re-price business. Consequently it was very difficult for businesses like MAP, which rely on market dislocation to re-underwrite other people's mistakes, to make any meaningful headway. After taking into account the increase in cession, gross earned premium is only up 6% over 2017, still a long way short of historic norms.

Interestingly, catastrophe incidence was similarly elevated to 2017, with hurricanes Florence and Michael impacting the US, four significant loss events in Asia, followed by a repeat of the Californian Wildfires. Projected ultimate gross losses for these events are \$20.0m, with \$12.9m incurred at year end.

### 2019 Trading Conditions

Once again the market is proving stubbornly resistant to meaningful change, although given the fact that many of our peers have lost considerable amounts of money in catastrophe business over the last couple of years is starting to induce a certain level of angst. Commentators often lament the over-supply of Global Capital as driving sub-standard underwriting returns throughout the industry. Whereas this is undoubtedly true, to my mind the more insidious problem is the over-reliance of much of the market on third party proprietary models, particularly in the more volatile, catastrophe exposed lines of business. Time and again there is shown to be a material gap between theoretical modelled by-peril output and the harsh reality of an all-risks contract, magnified by legal and regulatory interpretation. Added to this, much of the Capital Markets operate an Agency model, whereby they are incentivised to bet investors' money on these inadequate metrics. Until this delusional adherence to off the shelf models (often excessively optimised by the counterparty, or their intermediary) is replaced by a reasonable level of prudence, it will prove hard to escape their gravitational pull.

# MANAGING AGENT'S REPORT

---

continued

## FINANCIAL REPORT

### Investment Return

The investment return is represented by the syndicate's share of income earned by Syndicate 2791 on balances (underwriting, non-technical and statement of financial position funding) received or paid on Syndicate 6103's behalf. Income receivable or chargeable is calculated monthly on average balances actually received or paid by Syndicate 2791 at relevant rates for each currency, as set out in the reinsurance agreement.

The investment return contributed a loss of £0.01m (2017: profit of £0.2m) to the annual result.

The syndicate undertakes no lending of securities and does not undertake exchange rate management.

### Currency Translation Differences

Whilst virtually all of the syndicate's assets are held in US dollars the results are published in sterling. The result of this is that changes in the £:US dollar exchange rate can alter the reported sterling results. However, as capital providers receive distributions virtually all in US dollars, the accounting exchange movement booked has no effect on the currency distributions to capital providers.

The accounting exchange gain for the year is £0.1m (2017: loss £0.5m). This principally reflects the US dollar strengthening against sterling from the opening rate of 1.35 to the current year end rate of 1.27 as further set out in note 10.

### Reinsurance

During the period no outwards reinsurance has been purchased.

### Solvency Capital Requirement

The Managing Agent is required to provide a solvency capital assessment (SCR) to Lloyd's which sets the capital required to be held by the members of the syndicate for the prospective underwriting year. Lloyd's syndicate SCRs are combined to provide the basis of the Lloyd's internal model which the Prudential Regulation Authority originally approved in December 2016.

This amount is derived from the syndicate's loss distribution, which is calculated internally. It is the loss at the 99.5th confidence level, reflecting uncertainty in the ultimate run-off of underwriting liabilities (SCR 'to ultimate'). The syndicate must also calculate its SCR at the same confidence level but reflecting uncertainty over a one year time horizon (one year SCR) for Lloyd's to use in meeting Solvency II requirements.

The SCRs of each syndicate are subject to review by Lloyd's and approval by the Lloyd's Capital and Planning Group.

A syndicate may be comprised of one or more underwriting members of Lloyd's. Each member is liable for its own share of underwriting liabilities on the Syndicate on which it is participating but not other members' shares. Accordingly, the capital requirement that Lloyd's sets for each member operates on a similar basis.

Each member's SCR shall thus be determined by the sum of the member's share of the syndicate SCR 'to ultimate'. Where a member participates on more than one syndicate, a credit for diversification is provided to reflect the spread of risk, for that member. Over and above this, Lloyd's applies a capital uplift to the member's capital requirement, known as the Economic Capital Requirement (ECR). The purpose of this uplift, which is a Lloyd's not a Solvency II requirement, is to meet Lloyd's financial strength, licence and ratings objectives. The capital uplift applied for 2018 is 35% (2017: 35%) of the member SCR 'to ultimate'.

The syndicate current capital assessment has been established using our internal Solvency II model which has been run within the capital regime as prescribed by Lloyd's. The internal model uses sophisticated mathematical models reflecting key risks within the syndicate. The risks are principally Insurance (catastrophes, pricing and reserving), Market (equity, liquidity, currency, interest rate and spread), Credit (brokers, investment and reinsurance) and Operational.

The following table sets out the syndicate's ECR which is unaudited:

	2019	2018
	£m	£m
6103	116.2	113.5

ECR capital is provided by the members of the syndicate from syndicate own funds (retained profits) set under Solvency II regulations plus additional contributed assets held and managed by Lloyd's of London, known as Funds at Lloyd's or FAL.

# MANAGING AGENT'S REPORT

---

continued

## **FINANCIAL REPORT** *continued*

The syndicate quota share arrangement with Syndicate 2791 has remained at 30% cession for the 2018 and 2019 year of account which is reflected in similar ECR capital as shown above.

### **European Union business**

In order to ensure continued market access to European (re)insurance business following the U.K.'s exit from the European Union, Lloyd's has established a Belgian subsidiary - Lloyd's Insurance Company S.A.

More commonly known as 'Lloyd's Brussels', this subsidiary is authorised and regulated as an insurance entity by the National Bank of Belgium and regulated by the Financial Services and Markets Authority.

Lloyd's Brussels is capitalised in accordance with Solvency II rules and is licensed to write non-life risks across the European Economic Area (EEA), the UK and Monaco.

Lloyd's Brussels benefits from Lloyd's central resources, including the Lloyd's Central Fund. As all Lloyd's Brussels policies are 100% reinsured back to Lloyd's syndicates, they are ultimately backed by Lloyd's unique capital structure, often referred to as the Chain of Security.

All European non-life business incepting and/or renewing on or after 1 January 2019 will now be placed with Lloyd's Brussels and the structure of Lloyds Brussels enables business partners and policyholders to retain access to the underwriting expertise of the Lloyd's market via established distribution channels of brokers, coverholders, and syndicates.

Lloyd's has publicly committed that its syndicates will continue to pay all valid claims on historic policies and that before the end of 2020 all legacy EEA business will be moved to Lloyd's Brussels via a Part VII transfer.

Syndicate 6103 is currently unaffected by the subsidiary due to its wholly United States reinsurance focus. However, along with all Lloyd's syndicates it may be affected by future changes in UK-US-European passporting rules.

### **Future Developments**

The syndicate continues to transact United States reinsurance business that it has transacted in historically.

### **Research and Development**

The syndicate has not participated in any research and development activity during the period.

# MANAGING AGENT'S REPORT

---

continued

## **RISK MANAGEMENT**

We have established a risk management framework whose primary objective is to protect the syndicate from events which negatively impact current and future returns. Further information is disclosed in note 20 to the financial statements.

### **Principal Risks and Uncertainties**

Syndicate 6103 accepts business under a funds withheld reinsurance contract with Syndicate 2791. The majority of the principal risks applying to Syndicate 6103 are managed within Syndicate 2791.

#### **Insurance risk**

Insurance risk includes the risks that a policy will be written for too low a premium or provide inappropriate cover, that the frequency or severity of insured events will be higher than expected, or that estimates of claims subsequently prove to be insufficient. Underwriting strategy is agreed by the Board and set out in the Syndicate Business Plan which is submitted to Lloyd's each year. Processes are in place to identify, quantify and manage aggregate exposures and technical prices within each of our underwriting classes. Reinsurance may be purchased, where appropriate to our risk appetite and to reduce the retained financial impact of catastrophic loss. Reserves set are subject to stress testing and independent review.

#### **Credit risk**

Credit risk is the risk of default or the inability of one or more of the syndicate's reinsurers or brokers to settle their debts as they fall due. Where reinsurance is purchased it is placed with security that meets the criteria agreed by the Board. Use is made of independent rating agencies. Business is only accepted through accredited Lloyd's brokers who are reviewed by the Agency's Security Committee. The syndicate has not purchased any reinsurance for the 2016 year of account or any year of account thereafter.

#### **Liquidity risk**

This is the risk that the syndicate will not be able to meet its liabilities as they fall due, owing to a shortfall in cash. Liquidity management forms an important part of the financial management practices of the syndicate. Cash flow projections and budgetary controls are maintained and reported upon to the Board. However, the syndicate has no cash and investments and this risk is wholly managed by Syndicate 2791.

#### **Market risk**

Market risk is the potential adverse financial impact of changes in value of financial instruments caused by fluctuations in foreign currency, interest rates or equity prices. The potential impact of market risk elements is reported to the Board and the potential financial impact of changes in market value is principally monitored through the use of an economic scenario generator in the capital setting process.

#### **Foreign currency exchange risk**

We operate from the United Kingdom but all our premiums and claims are settled in currencies other than sterling. Our reported financial results are denominated in sterling and are therefore affected by the exchange rate against sterling of our main currency assets (US dollars, Euros and Canadian dollars). The syndicate will settle its surplus assets in US dollars as each underwriting year closes or earlier if a solvency transfer is approved. We do not therefore seek to hedge the US dollar exposure. Other currencies are tracked against sterling to ensure the amount of exposure is monitored and if needed appropriate action taken.

#### **Interest rate risk**

Interest rate risk is the potential adverse financial impact of changes in value of assets and liabilities caused by rising or falling market interest rates. For example, debt and fixed income securities are exposed to actual fluctuations or changes in market perception of current or future interest rates. Exposure to interest rate risk is monitored through the use of Value-at-Risk analysis, scenario testing, stress testing and duration reviews. Interest rate risk is managed by matching of assets and liabilities to within five years. Although the syndicate holds no investments it is exposed to interest rate risk by way of its share of the investment fund held on its behalf by Syndicate 2791.

#### **Operational risk**

Operational risk is the potential adverse financial and reputational impact of inadequate or failed internal processes, people and systems or from external events. An internal risk assessment process has been developed to assess the potential impact and probability of certain events and a system of internal controls has been implemented to mitigate the risks. These controls have been monitored by Senior Management and the Board whilst their ongoing effectiveness is validated through both the ongoing risk assessment and internal audit process.



# MANAGING AGENT'S REPORT

continued

## RISK MANAGEMENT *continued*

### Regulatory risk

The Managing Agent and the syndicate are required to comply with the requirements of the Prudential Regulation Authority (PRA), the Financial Conduct Authority (FCA) and Lloyd's. Lloyd's requirements include those imposed on the Lloyd's market by overseas regulators, particularly in respect of US situs business. Regulatory risk is the risk of loss owing to a breach of regulatory requirements or failure to respond to regulatory change. The Managing Agent has a director of risk and assurance who monitors regulatory developments and assesses the impact on agency policy and is supported by an assistant who carries out a compliance monitoring programme.

## CORPORATE GOVERNANCE

### Directors and Directors' Interests

The Directors of the Managing Agent who served during the year ended 31 December 2018 together with their participations on the syndicate were as follows:

	2018 year of account £'000	2017 year of account £'000
K Allchorne	–	–
C E Dandridge (Non-executive)	–	–
J D Denoon Duncan*	63	44
A S Foote (Non-executive)*	67	–
T P Froehlich (Non-executive)	–	–
A Kong*	237	118
P Langridge	–	–
A J T Milligan (Non-executive) (resigned 31 October 2018)	–	–
D E S Shipley (Non-executive Chairman)*	421	210
C Smelt*	206	115
R J Sumner*	151	75
R K Trubshaw (Active Underwriter)*	1,400	594

\*Participate via Nomina 208 LLP, an unaligned corporate member and/or MAP Capital Limited.

The total capacity of the 2018 year of account of the syndicate was £47.7m (2017: £15.7m).

### Governance Framework

MAP maintains a clear organisational and governance framework with the role and responsibility of the Board, sub-committees, directors and senior staff clearly defined and documented.

An established risk management framework operates in respect of the identification, assessment, management and monitoring of all core areas of risk to which the business is exposed in its day-to-day activities (insurance risk, market risk, reserving risk, credit risk, liquidity risk and operational risk) with defined and articulated risk appetites in all areas.

# MANAGING AGENT'S REPORT

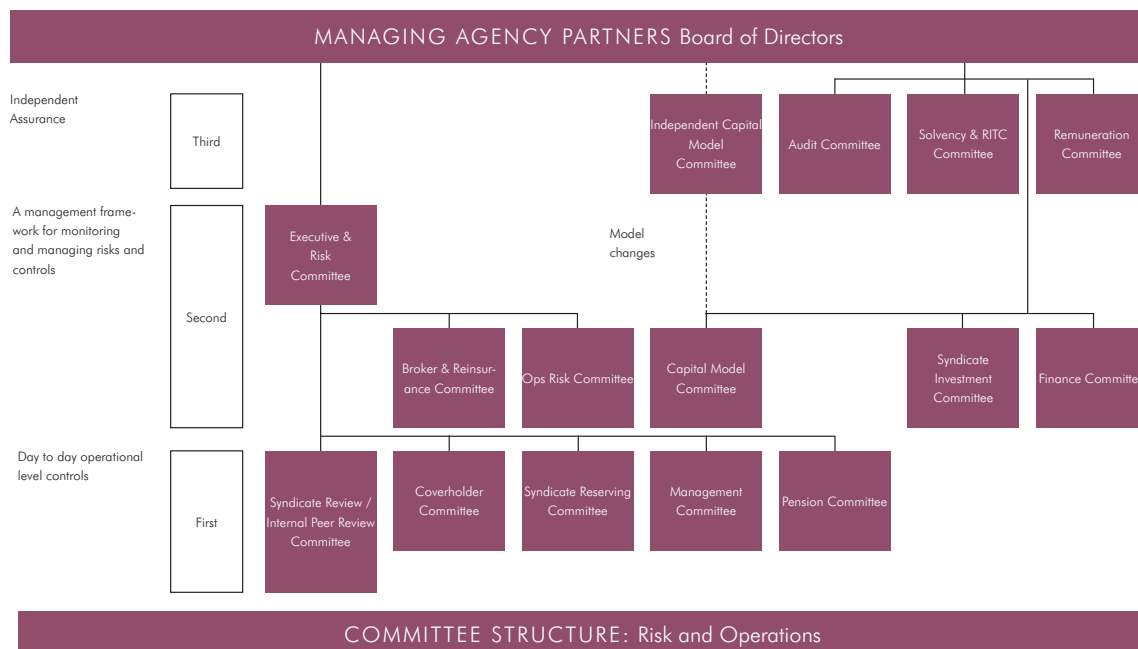
continued

## CORPORATE GOVERNANCE *continued*

MAP operates a three lines of defence approach to the overall governance of its operations. The first line of defence is the day to day operational level controls; the second line of defence being a framework for monitoring and managing risks and controls; and the third being challenge through both:

- oversight committees each comprising a majority of non-executive directors; and
- independent assurance review through the Internal Audit function.

This is depicted in the following Committee Structure diagram:



### Reappointment of Auditors

Ernst & Young LLP were not reappointed as auditors for 2018. The audit committee undertook a tender process in respect of external audit services during 2017 and it was concluded that Deloitte LLP would be appointed as auditors for 2018 onwards. Deloitte LLP will be reappointed as the syndicate's auditors for 2019.

### Disclosure of Information to the Auditors

So far as each person who was a director of the managing agent at the date of approving this report is aware, there is no relevant audit information, being information needed by the auditor in connection with its report, of which the auditor is unaware. Having made enquiries of fellow directors of the agency and the syndicate's auditor, each director has taken all the steps that he/she is obliged to take as a director in order to make himself/herself aware of any relevant audit information and to establish that the auditor is aware of that information.

### Annual General Meeting

As permitted under the Syndicate Meetings (Amendment No.1) Byelaw (No.18 of 2000) MAP does not propose holding a Syndicate Annual General Meeting of the members of the Syndicate. Members may object to this proposal within 21 days of the issue of these accounts. Any such objection should be addressed to P Langridge, Risk & Assurance Director at the registered office of Managing Agency Partners Limited.

This managing agent's report was approved by the Board of Managing Agency Partners Limited on 19 March 2019 and signed on its behalf by:

**R K Trubshaw**  
Active Underwriter  
Managing Agency Partners Limited  
London

**P Langridge**  
Company Secretary  
19 March 2019

## STATEMENT OF MANAGING AGENT'S RESPONSIBILITIES

---

The managing agent is responsible for preparing the syndicate annual accounts in accordance with applicable law and regulations.

The Insurance Accounts Directive (Lloyd's Syndicate and Aggregate Accounts) Regulations 2008 require the managing agent to prepare syndicate annual accounts at 31 December each year in accordance with United Kingdom Generally Accepted Accounting Practice (United Kingdom Accounting Standards and applicable law). The annual accounts are required by law to give a true and fair view of the state of affairs of the syndicate as at that date and of its profit or loss for that year.

In preparing the syndicate annual accounts, the managing agent is required to:

1. select suitable accounting policies which are applied consistently;
2. make judgements and estimates that are reasonable and prudent;
3. state whether applicable UK accounting standards have been followed, subject to any material departures disclosed and explained in the annual accounts; and
4. prepare the annual accounts on the basis that the syndicate will continue to write future business unless it is inappropriate to presume that the syndicate will do so.

The managing agent is responsible for keeping proper accounting records which disclose with reasonable accuracy at any time the financial position of the syndicate and enable it to ensure that the syndicate annual accounts comply with the 2008 Regulations. It is also responsible for safeguarding the assets of the syndicate and hence for taking reasonable steps for prevention and detection of fraud and other irregularities.

The managing agent is responsible for the maintenance and integrity of the corporate and financial information included on the business' website. Legislation in the United Kingdom governing the preparation and dissemination of annual accounts may differ from legislation in other jurisdictions.

# INDEPENDENT AUDITOR'S REPORT

---

## Independent auditor's report to the members of Syndicate 6103

Report on the audit of the syndicate annual financial statements.

### Opinion

In our opinion the syndicate annual financial statements of Syndicate 6103 (the 'syndicate'):

- give a true and fair view of the state of the syndicate's affairs as at 31 December 2018 and of its loss for the year then ended;
- have been properly prepared in accordance with United Kingdom Generally Accepted Accounting Practice, including Financial Reporting Standard 102 "The Financial Reporting Standard applicable in the UK and Republic of Ireland"; and
- have been prepared in accordance with the requirements of The Insurance Accounts Directive (Lloyd's Syndicate and Aggregate Accounts) Regulations 2008.

We have audited the syndicate annual financial statements which comprise:

- the income statement;
- the statement of comprehensive income;
- the statement of changes in members' balances
- the statement of financial position;
- the statement of cash flow; and
- the related notes 1 to 22.

The financial reporting framework that has been applied in their preparation is applicable law and United Kingdom Accounting Standards, including Financial Reporting Standard 102 "The Financial Reporting Standard applicable in the UK and Republic of Ireland" (United Kingdom Generally Accepted Accounting Practice).

### Basis for opinion

We conducted our audit in accordance with International Standards on Auditing (UK) (ISAs (UK)) and applicable law. Our responsibilities under those standards are further described in the auditor's responsibilities for the audit of the syndicate annual financial statements section of our report.

We are independent of the syndicate in accordance with the ethical requirements that are relevant to our audit of the syndicate annual financial statements in the UK, including the Financial Reporting Council's (the 'FRC's') Ethical Standard, and we have fulfilled our other ethical responsibilities in accordance with these requirements. We believe that the audit evidence we have obtained is sufficient and appropriate to provide a basis for our opinion.

### Conclusions relating to going concern

We are required by ISAs (UK) to report in respect of the following matters where:

- the managing agent's use of the going concern basis of accounting in preparation of the financial statements is not appropriate; or
- the managing agent has not disclosed in the syndicate annual financial statements any identified material uncertainties that may cast significant doubt about the syndicate's ability to continue to adopt the going concern basis of accounting for a period of at least twelve months from the date when the syndicate annual financial statements are authorised for issue.

We have nothing to report in respect of these matters.

### Other information

The managing agent is responsible for the other information. The other information comprises the information included in the annual report, other than the syndicate annual financial statements and our auditor's report thereon. Our opinion on the syndicate annual financial statements does not cover the other information and, except to the extent otherwise explicitly stated in our report, we do not express any form of assurance conclusion thereon.

In connection with our audit of the syndicate annual financial statements, our responsibility is to read the other information and, in doing so, consider whether the other information is materially inconsistent with the syndicate annual financial statements or our knowledge obtained in the audit or otherwise appears to be materially misstated. If we identify such material inconsistencies or apparent material misstatements, we are required to determine whether there is a material misstatement in the syndicate annual financial statements or a material misstatement of the other information. If, based on the work we have performed, we conclude that there is a material misstatement of this other information, we are required to report that fact.

We have nothing to report in respect of these matters.

# INDEPENDENT AUDITOR'S REPORT

---

continued

## **Responsibilities of managing agent**

As explained more fully in the managing agent's responsibilities statement, the managing agent is responsible for the preparation of the syndicate annual financial statements and for being satisfied that they give a true and fair view, and for such internal control as the managing agent determines is necessary to enable the preparation of syndicate annual financial statements that are free from material misstatement, whether due to fraud or error.

In preparing the syndicate annual financial statements, the managing agent is responsible for assessing the syndicate's ability to continue in operation, disclosing, as applicable, matters related to the syndicate's ability to continue in operation and to use the going concern basis of accounting unless the managing agent intends to cease the syndicate's operations, or has no realistic alternative but to do so.

## **Auditor's responsibilities for the audit of the syndicate annual financial statements**

Our objectives are to obtain reasonable assurance about whether the syndicate annual financial statements as a whole are free from material misstatement, whether due to fraud or error, and to issue an auditor's report that includes our opinion. Reasonable assurance is a high level of assurance, but is not a guarantee that an audit conducted in accordance with ISAs (UK) will always detect a material misstatement when it exists. Misstatements can arise from fraud or error and are considered material if, individually or in the aggregate, they could reasonably be expected to influence the economic decisions of users taken on the basis of these syndicate annual financial statements.

A further description of our responsibilities for the audit of the syndicate annual financial statements is located on the FRC's website at: [www.frc.org.uk/auditorsresponsibilities](http://www.frc.org.uk/auditorsresponsibilities). This description forms part of our auditor's report.

## **Report on other legal and regulatory requirements**

### **Opinions on other matters prescribed by The Insurance Accounts Directive (Lloyd's Syndicate and Aggregate Accounts) Regulations 2008**

In our opinion, based on the work undertaken in the course of the audit:

- the information given in the managing agent's report for the financial year for which the financial statements are prepared is consistent with the financial statements; and
- the managing agent's report has been prepared in accordance with applicable legal requirements.

In the light of the knowledge and understanding of the syndicate and its environment obtained in the course of the audit, we have not identified any material misstatements in the managing agent's report.

## **Matters on which we are required to report by exception**

Under The Insurance Accounts Directive (Lloyd's Syndicate and Aggregate Accounts) Regulations 2008 we are required to report in respect of the following matters if, in our opinion:

- the managing agent in respect of the syndicate has not kept adequate accounting records; or
- the syndicate annual financial statements are not in agreement with the accounting records; or
- we have not received all the information and explanations we require for our audit.

We have nothing to report in respect of these matters.

## **Use of our report**

This report is made solely to the syndicate's members, as a body, in accordance with regulation 10 of The Insurance Accounts Directive (Lloyd's Syndicate and Aggregate Accounts) Regulations 2008. Our audit work has been undertaken so that we might state to the syndicate's members those matters we are required to state to them in an auditor's report and for no other purpose. To the fullest extent permitted by law, we do not accept or assume responsibility to anyone other than the syndicate's members as a body, for our audit work, for this report, or for the opinions we have formed.

Andrew Downes (Senior statutory auditor)

For and on behalf of Deloitte LLP

Statutory Auditor

London, UK

19 March 2019

# INCOME STATEMENT TECHNICAL ACCOUNT – GENERAL BUSINESS

for the year ended 31 December 2018

	Note	2018 £'000	2017 £'000
<b>Earned premiums, net of reinsurance</b>			
Gross premiums written	3	17,240	5,098
Outward reinsurance premiums		–	–
Net premiums written		17,240	5,098
Change in the provision for unearned premiums			
Gross amount	4	(1,017)	11
Reinsurers' share	4	–	–
Change in the net provision for unearned premiums		(1,017)	11
<b>Earned premiums, net of reinsurance</b>		<b>16,223</b>	<b>5,109</b>
<b>Allocated investment return transferred from the non-technical account</b>		<b>(12)</b>	<b>157</b>
<b>Claims incurred, net of reinsurance</b>			
Claims paid			
Gross amount	3,5	(8,132)	(3,790)
Reinsurers' share		–	–
Net claims paid		(8,132)	(3,790)
Change in the provision for claims			
Gross amount	3,5	(8,578)	(1,368)
Reinsurers' share	5	–	–
Change in the net provision for claims		(8,578)	(1,368)
<b>Claims incurred, net of reinsurance</b>		<b>(16,710)</b>	<b>(5,158)</b>
Ceding and overriding commission		(991)	(302)
Administrative expenses		15	(73)
Net operating expenses	3,6	(976)	(375)
<b>Balance on the technical account for general business</b>		<b>(1,475)</b>	<b>(267)</b>

All operations are continuing.

## INCOME STATEMENT NON-TECHNICAL ACCOUNT – GENERAL BUSINESS

for the year ended 31 December 2018

	Note	2018 £'000	2017 £'000
Balance on the general business technical account		(1,475)	(267)
Investment income	8	(12)	157
Allocated investment return transferred to general business technical account		12	(157)
Non-technical account foreign exchange	10	8	(6)
<b>Loss for the financial year</b>		<b>(1,467)</b>	<b>(273)</b>

## STATEMENT OF COMPREHENSIVE INCOME

for the year ended 31 December 2018

	Note	2018 £'000	2017 £'000
Loss for the financial year		(1,467)	(273)
Exchange differences on foreign currency translation	10	55	(543)
<b>Total comprehensive income for the year</b>		<b>(1,412)</b>	<b>(816)</b>

## STATEMENT OF CHANGES IN MEMBERS' BALANCES

for the year ended 31 December 2018

<b>Reconciliation of Members' Balances</b>	2018 £'000	2017 £'000
Members' balances brought forward at 1 January	5,996	15,005
Total Comprehensive Income for the year	(1,412)	(816)
Payments of profit to members' personal reserve funds via Syndicate 2791 for the 2015 (2014) year of account	(3,742)	(7,968)
Members' agents fees for the 2015 (2014) year of account	(91)	(225)
<b>Members' balances carried forward at 31 December</b>	<b>751</b>	<b>5,996</b>

Members participate on syndicates by reference to years of account and their ultimate result, assets and liabilities are assessed with reference to policies incepting in that year of account in respect of their membership of a participation.

## STATEMENT OF FINANCIAL POSITION ASSETS

at 31 December 2018

	Note	2018 £'000	2017 £'000
<b>Reinsurers' share of technical provisions</b>			
Provision for unearned premiums	4	–	–
Claims outstanding	5	–	–
		–	–
<b>Debtors</b>			
Debtors arising out of reinsurance operations	11	28,544	14,996
Other debtors	12	373	269
		28,917	15,265
<b>Total assets</b>		<b>28,917</b>	<b>15,265</b>

## STATEMENT OF FINANCIAL POSITION LIABILITIES

as at 31 December 2018

	Note	2018 £'000	2017 £'000
<b>Capital and reserves</b>			
Members' balances		751	5,996
<b>Technical provisions</b>			
Provision for unearned premiums	4	1,450	354
Claims outstanding	5	11,009	1,882
		12,459	2,236
<b>Creditors</b>			
Creditors arising out of reinsurance operations	13	14,591	5,601
Other creditors	14	1,116	1,432
		15,707	7,033
<b>Total liabilities</b>		<b>28,917</b>	<b>15,265</b>

The financial statements on pages 35 to 50 were approved by the Board of Managing Agency Partners Limited on 19 March 2019 and were signed on its behalf by:

**R K Trubshaw**  
Active Underwriter

**R J Sumner**  
Finance Director

19 March 2019



## STATEMENT OF CASH FLOWS

for the year ended 31 December 2018

	Note	2018 £000	2017 £'000
<b>Operating loss on ordinary activities</b>		<b>(1,467)</b>	<b>(273)</b>
Movement in gross technical provisions		10,223	1,111
Movement in reinsurers' share of gross technical provisions		–	–
Movement in debtors		(13,652)	8,418
Movement in creditors		8,674	(520)
Investment return		12	(157)
Exchange differences on foreign currency translation		55	(543)
Members' agents' fee advances		(91)	(225)
Net cash inflow from operating activities		3,754	7,811
<b>Cash flows from investing activities</b>			
Income accrued (to)/from Syndicate 2791		(12)	157
<b>Cash flows owed from financing activities</b>			
Payments of profits to members in respect of underwriting participations		(3,861)	(8,243)
Receipt of losses from members in respect of underwriting participations		119	275
Net Cash outflow from financing activities		(3,742)	(7,968)
Increase in cash and cash equivalents		–	–
Cash and cash equivalents at 1 January		–	–
<b>Cash and cash equivalents at 31 December</b>	15	–	–

# NOTES TO THE ACCOUNTS

---

for the year ended 31 December 2018

## 1.1 Basis of Preparation and Statement of Compliance

These financial statements have been prepared in accordance with the Insurance Accounts Directive (Lloyd's Syndicate and Aggregate Accounts) Regulations 2008, FRS 102 and FRS 103, being applicable UK GAAP accounting standards, and in accordance with the provisions of Schedule 3 of the Large and Medium-sized Companies and Groups (Accounts and Reports) Regulations relating to insurance companies.

The functional currency is US dollars but the financial statements are prepared in sterling which is the presentational currency of the syndicate and rounded to the nearest £'000. As permitted by FRS 103 the syndicate continues to apply the existing accounting policies that were applied prior to this standard for its insurance contracts.

The financial statements are prepared under the historical cost convention.

The result for the year is determined on the annual basis of accounting in accordance with UK GAAP.

Syndicate 6103 operates on a funds withheld basis with Syndicate 2791. Syndicate 2791 is also managed by the managing agent, MAP. Syndicate 6103 holds no cash or investments. All the syndicate's funds are held by Syndicate 2791 which makes payments of liabilities on Syndicate 6103's behalf. Debtors and creditors between the syndicates are grossed up in the syndicate statement of financial position and upon the closure of each year of account, normally after 36 months, the assets and liabilities of that closing year are netted off as part of the commutation settlement with Syndicate 2791.

## 1.2 Judgements and Key Sources of Estimation Uncertainty

The preparation of the financial statements requires management to make judgements, estimates and assumptions that affect the amounts reported for assets and liabilities as at the statement of financial position date and the amounts reported for revenues and expenses during the year.

However, the nature of estimation means that actual outcomes could differ from those estimates.

The following are the syndicate's key sources of estimation uncertainty:

### *Insurance contract technical provisions*

For insurance contracts, estimates have to be made both for the expected ultimate cost of claims reported at the reporting date and for the expected ultimate cost of claims incurred but not yet reported (IBNR) at the reporting date. It can take a significant period of time before the ultimate claims cost can be established with certainty and for some types of policies, IBNR claims form the majority of the liability in the statement of financial position.

The ultimate cost of outstanding claims is estimated by using a range of standard actuarial claims projection techniques, such as Chain Ladder, Bornheutter-Ferguson methods and individual reserving at contract level.

The main assumption underlying these techniques is that past claims development experience can be used to project future claims development and hence ultimate claims costs. The provision for claims outstanding is assessed on an individual case basis and is based on the estimated ultimate cost of all claims notified but not settled by the statement of financial position date, together with the provision for related claims handling costs. The provision also includes the estimated cost of claims IBNR at the statement of financial position date based on statistical methods.

These methods generally involve projecting from past experience of the development of claims over time to form a view of the likely ultimate claims to be experienced for more recent underwriting, having regard to variations in the business accepted and the underlying terms and conditions. For the most recent years, where a high degree of volatility arises from projections, estimates may be based in part on output from pricing and other models of the business accepted and assessments of underwriting conditions.

The two most critical assumptions as regards claims provisions are that the past is a reasonable predictor of the likely level of future claims development and that the rating and other models used for current business are fair reflections of the likely level of ultimate claims to be incurred.

The directors consider that the provisions for gross claims and related reinsurance recoveries are fairly stated on the basis of the information currently available to them. However, the ultimate liability will vary as a result of subsequent information and events and this may result in significant adjustments to the amounts provided. Adjustments to the amounts of claims provisions established in prior years are reflected in the financial statements for the period in which the adjustments are made. In addition, where contracts are yet to expire, or where losses are not settled until several years after the expiration of the policy in question, the estimates are considered to be more volatile and consequently are subjected to additional management judgemental prudence adjustments. The methods used, and the estimates made, are reviewed regularly.

Where the amount of any material salvage and subrogation recoveries is separately identified it is reported as an asset.

Similar judgements, estimates and assumptions are employed in the assessment of adequacy of provisions for unearned premium. Judgement is also required in determining whether the pattern of insurance service provided by a contract requires amortisation of unearned premium on a basis other than time apportionment.

# NOTES TO THE ACCOUNTS

---

continued

## 1.2 Judgements and Key Sources of Estimation Uncertainty *continued*

### *Estimates of future premiums*

For certain insurance contracts, premium is initially recognised based on estimates of ultimate premiums. These estimates are judgemental and the main assumption underlying these estimates is that past premium development can be used to project future premium development.

Estimates include an element of judgement with regard to the level of claims affected future premiums receivable by the syndicate. The methods used for assessing future premiums generally involve projecting from past experience, based on the development of claims and the related inwards premiums receivable against these claims. The directors consider the estimates of gross future premium are fairly stated on the basis of the information available currently to them. However, the ultimate premium receivable can vary as a result of subsequent information or events and this may result in significant adjustments.

In addition, the most recent underwriting year estimates are considered to be more volatile and consequently are subjected to judgemental management adjustments.

### *Expense provisions – Unallocated loss adjustment provisions and legal provisions*

Estimates of future expenses to be incurred in respect of settlement transaction costs and administrating or adjusting expenses in respect of claim provisions are made at each statement of financial position date if applicable. The main assumptions underlying these provisions are that direct claim administration costs will be as budgeted, inflation rates will be in line with historical rates and claim payment patterns will reflect historical experience by line of business.

Expense provisions are also made in respect of legal disputes anticipated to be incurred in the normal course of business defending the syndicate position. These provisions are based on historical average costs or direct individual case estimates.

Changes in assumptions, quantum or complexity of future claims can affect the value of these provisions.

## 2. Accounting Policies

### *Insurance contracts*

An insurance contract (including inwards reinsurance contract) is defined as a contract containing significant insurance risk. Insurance risk is considered significant if, and only if, an insured event could cause the syndicate to pay significant additional benefits. Such contracts remain insurance contracts until all rights and obligations are extinguished or expire.

### *Premiums written*

Premiums written comprise premiums on contracts incepted during the financial year of account. Estimates are made for pipeline premiums, representing amounts due to the syndicate not yet notified received at the statement of financial position date.

Differences between such estimates and actual amounts will be recorded in the period in which the actual amounts are determined.

Premiums are disclosed before the deduction of taxes or duties levied on them.

Premiums for contracts where the syndicate delegates underwriting authority to another party (e.g. binding authorities, lineslips or proportional treaties) use an estimate of the proportion of premiums incepted at the reference date as an estimate based on historical inception patterns, if no pattern exists business is assumed to incept evenly over the term of the delegated authority.

### *Unearned gross premiums*

Written premiums are recognised evenly over the term of the contract for those contracts where the incidence of risk does not vary over the term. Contracts where the incidence of risk differs over the term are earned based on the risk profile of the policy. Unearned premiums represent the proportion of premiums written in the year that relate to unexpired terms of policies in force at the statement of financial position date, calculated on the basis of established earnings patterns or time apportionment as appropriate.

### *Acquisition costs*

The syndicate is not charged with acquisition costs and has no deferred acquisition costs.

### *Reinsurance premium ceded*

Outwards reinsurance premiums are accounted for in the year of inception. Premiums ceded to reinstate reinsurance cover or additional premiums payable on loss are recognised when they may be assessed with reasonable certainty. The syndicate has not purchased any reinsurance for the 2016 year of account or any year of account thereafter.

### *Unearned reinsurance premium*

Reinsurance premiums paid to purchase high excess reinsurance contracts are earned evenly over the period at risk.

# NOTES TO THE ACCOUNTS

---

continued

## 2. Accounting Policies *continued*

### **Claims provisions and related recoveries**

Claims paid comprise claims and claim handling expenses paid during the period.

Gross claims incurred comprise the estimated cost of all claims occurring during the year, whether reported or not, including related direct and indirect claims handling costs and adjustments to claims outstanding from previous years. The provision for claims outstanding is assessed on an individual case and class basis, as appropriate, and is based on the estimated ultimate cost of all claims notified but not settled by the statement of financial position date, together with the provision for related claims handling costs. The provision also includes the estimated cost of claims incurred but not reported ('IBNR') at the statement of financial position date based on statistical methods. Separate reserves are established for each year of account.

The reinsurers' share of provisions for claims is based on the amounts of outstanding claims and projections for IBNR, net of a provision for reinsurance bad debt, having regard to the reinsurance programme in place for each class of business, the claims experience for the year and the current security rating of the reinsurance entities involved. A number of statistical methods are used to assist in making these estimates.

### **Future unallocated loss adjustment expenses**

An accrual for all future unallocated loss adjustment expenses ('ULAE') is made if applicable. The ULAE is comprised of those costs which are related to the settlement of earned claims but which are not directly attributable to individual claims. ULAE expenses are undiscounted and include the expenses of managing the run-off of the business on the basis the business is a going concern. Costs of administration of any reinsurance programme are included in the gross ULAE. Separate reserves are established for each year of account.

### **Legal provisions**

The syndicate may be subject to legal disputes in the normal course of business. Provisions for such events and their related costs are recognised where there is an expected present obligation relating to a past event or evidence exists of the requirement for a general provision that can be measured reliably and it is probable that an outflow of economic benefit will be required to settle an obligation. The directors of the managing agent do not expect the outcome of these claims, either individually or in aggregate, to have a material effect upon the syndicate's operations or financial position. As allowed by FRS 102, further disclosure has not been given as it may seriously prejudice the outcome of any legal proceedings.

### **Insurance receivables and payables**

Insurance receivables and payables are recognised when due and measured on initial recognition at the fair value of the consideration received. They are derecognised when the obligation is settled, cancelled or expired.

### **Bad debt**

Bad debts are provided for only where specific information becomes available to suggest a debtor may be unable or unwilling to settle its debts to the syndicate. Specific information may be directly attributed to the debtor company or may be indirect information from a rating agency or other source. The provision is calculated on a case by case basis.

### **Unexpired risks provision**

A provision for unexpired risks may be made, if necessary, where claims and related expenses arising after the end of the financial period in respect of contracts concluded before that date exceed unearned premiums and premiums receivable, after the deduction of any deferred acquisition costs.

The assessment of whether an unexpired risk provision is required is based on information available at the statement of financial position date which may include evidence of relevant previous claims experience on similar contracts. The assessment is not required to take into account any new claims events occurring after the statement of financial position date as these are non-adjusting events.

The provision for unexpired risks is calculated by reference to all classes of business, which are all managed together on a year of account basis, after taking into account relevant future investment return. The provision for unexpired risks is included in technical provisions in the statement of financial position.

### **Foreign currency translation**

Financial Reporting Standard 102 requires each entity to identify its functional currency and a presentational currency. The functional currency is identified as the currency of the primary economic environment in which the entity operates. The functional currency of this syndicate is US dollars as the majority of the underwriting business, cash flows and expenses are in US dollars. We have chosen to maintain our presentational currency as sterling as the syndicate is based in the UK, complies with UK reporting standards and to enable simpler comparisons to other Lloyds's insurance syndicates.

The syndicate records transactions in four settlement currencies being sterling, US dollars, Canadian dollars and Euros and when reported these currencies are translated in the income statement at the average rates of exchange for the period. Underwriting transactions denominated in other foreign currencies are included at the rate of exchange ruling at the date the transaction is processed.

# NOTES TO THE ACCOUNTS

continued

## 2. Accounting Policies *continued*

### *Foreign currency translation continued*

As permitted by FRS 103, the syndicate has continued with its existing accounting policy to treat non-monetary assets and liabilities arising from insurance contracts (which include items such as unearned premiums and deferred acquisition costs) the same as monetary assets and liabilities. Consequently, all assets and liabilities denominated in foreign currencies are translated at the rate of exchange at the statement of financial position date or, if appropriate, at the forward contract rate.

Exchange differences from the functional currency (US dollars) arising from the retranslation of opening balances and between average and year-end rates to the presentational currency are included in the statement of comprehensive income.

All other exchange differences are included in the general business non-technical account. The following rates of exchange have been used in the preparation of these accounts.

	2018		2017	
	Year end	Average	Year end	Average
USD	1.27	1.34	1.35	1.29
CAD	1.74	1.73	1.70	1.67
EUR	1.11	1.13	1.13	1.14

### *Investments*

The syndicate does not hold any investments or derivatives.

### *Investment return*

Investment return comprises an allocation, calculated on the monthly average of the Total Funded Paid Experience balance (equivalent to the premiums received, claims paid, ceding commission, interest expenses and income). This return is equal to the rate of investment return achieved by Syndicate 2791 on its invested funds during the relevant month and is equal to the gross return on its Credit for Reinsurance Fund for US dollar denominated balances. Interest on other currency positive balances is credited at rates achieved by Syndicate 2791 on those currencies for the relevant month.

If the average balance is negative, an interest expense is calculated on the monthly average at the relevant currency six month duration Treasury Bill rate plus 1.5%. The whole of the return is treated as investment income.

### *Allocation of investment return*

Investment return is initially recorded in the non-technical account. A transfer is made from the non-technical account to the general business technical account. Investment return has been wholly allocated to the technical account as all investments relate to the technical account.

### *Operating expenses*

All current and future syndicate expenses at the statement of financial position date, including audit fees, are charged to and borne by Syndicate 2791 for which the syndicate is charged a ceding commission of 5% of gross premiums written. Personal expenses (Lloyd's subscriptions and central fund), which are charged to Syndicate 2791, are covered by an overriding commission of 1% of gross premiums written.

### *Taxation*

Under Schedule 19 of the Finance Act 1993 managing agents are not required to deduct basic rate income tax from trading income. In addition, all UK basic rate income tax deducted from syndicate investment income is recoverable by managing agents and consequently the distribution made to members or their members' agents is gross of tax.

No provision has been made for any United States Federal Income Tax payable on underwriting results or investment earnings. Any payments on account made by the syndicate during the year are included in the statement of financial position under the heading 'other debtors'.

No provision has been made for any overseas tax payable by members on underwriting results.

### *Profit commission*

Profit commission is charged by the managing agent at a rate of 15%. This is charged to the syndicate as incurred on an earned basis but does not become payable until after the appropriate year of account closes, normally at 36 months.

# NOTES TO THE ACCOUNTS

continued

### 3. Segmental Analysis

All the syndicate's business, as set out in the technical account, is classified as reinsurance accepted and all premiums were concluded in the UK.

The geographical situs of the risks reinsured is principally the USA.

### 4. Provision for Unearned premiums

	Gross £'000	Reinsurers' share £'000	Net £'000
At 1 January 2018	354	–	354
Premiums written in year	17,240	–	17,240
Premiums earned in year	(16,223)	–	(16,223)
Foreign Exchange	79	–	79
<b>At 31 December 2018</b>	<b>1,450</b>	<b>–</b>	<b>1,450</b>
At 1 January 2017	397	–	397
Premiums written in year	5,098	–	5,098
Premiums earned in year	(5,109)	–	(5,109)
Foreign Exchange	(32)	–	(32)
<b>At 31 December 2017</b>	<b>354</b>	<b>–</b>	<b>354</b>

### 5. Claims Outstanding

	Gross £'000	Reinsurers' share £'000	Net £'000
At 1 January 2018	1,882	–	1,882
Claims incurred in current underwriting year	16,710	–	16,710
Claims paid during year by Syndicate 2791	(8,132)	–	(8,132)
RITC 2015 YOA commuted into Syndicate 2791	(41)	–	(41)
Foreign Exchange	590	–	590
<b>At 31 December 2018</b>	<b>11,009</b>	<b>–</b>	<b>11,009</b>
At 1 January 2017	728	–	728
Claims incurred in current underwriting year	5,158	–	5,158
Claims paid during year by Syndicate 2791	(3,790)	–	(3,790)
RITC 2014 YOA commuted into Syndicate 2791	(98)	–	(98)
Foreign Exchange	(116)	–	(116)
<b>At 31 December 2017</b>	<b>1,882</b>	<b>–</b>	<b>1,882</b>

The movement in the net provisions for claims includes a deterioration of £0.1m in respect of reserves set in prior years (2017: release of £0.2m).

### 6. Net Operating Expenses

All syndicate expenses, including audit fees, are charged to and borne by Syndicate 2791 for which the syndicate is charged a ceding commission of 5% of gross premiums written. Personal expenses (Lloyd's subscriptions and central fund), which are charged to Syndicate 2791, are covered by an overriding commission of up to 1% of gross premiums written.

A profit commission of 15% of profits for each Underwriting Year of Account is payable to the managing agent.

	2018 £'000	2017 £'000
The ceding commission within the administrative expenses include:		
Auditors' remuneration		
Fees for the audit of the syndicate	14	32
Audit-related assurance	19	27
Taxation compliance services	–	1
Other non-audit services	–	32
	<b>33</b>	<b>92</b>

Audit related assurance includes reporting required by law and regulation, reviews of interim financial information and reporting on regulatory returns. Other non-audit services represent actuarial valuation services and fees for the provision of the Syndicate Actuarial Opinions (SAO) to Lloyd's and HMRC from EY our former auditors.

## NOTES TO THE ACCOUNTS

continued

### 7. Staff Numbers and Costs

All staff are employed by the managing agent. No recharge of payroll costs for staff or in respect of directors' remuneration is made specifically to the syndicate – all such charges are made to Syndicate 2791 and covered by the ceding commission as set out in note 6.

Any profit related remuneration in respect of all directors and staff is wholly paid and borne by the managing agent.

8. Investment Income	2018 £'000	2017 £'000
Investment income	(12)	157

9. Calendar Year Investment Yield	2018 £'000	2017 £'000
Average syndicate funds available for investment held by Syndicate 2791	6,941	8,518
Investment return	(12)	157
Calendar year investment yield	(0.2%)	1.8%

Investment yield is almost entirely derived from US dollars. Other settlement currencies are immaterial.

The syndicate borrowed sterling to cover its sterling expenses and interest was paid at an average rate of 1.5% over six month duration Treasury Bills (2017: 1.5%) during the year.

### 10. Exchange Differences on Foreign Currency Translation

Exchange differences on foreign currency translation arise as follows:	2018 £'000	2017 £'000
On balances brought forward: from opening to year end rates	139	(560)
On transactions during 2018: from average to year end rates	(76)	11
Non-technical account foreign exchange	(8)	6
	55	(543)

11. Debtors Arising Out of Insurance Operations	2018 £'000	2017 £'000
Debtors arising out of reinsurance operations:		
Due within one year	5,165	5,256
Due after one year	23,379	9,740
	28,544	14,996

All debtors are due from Syndicate 2791.

12. Other Debtors	2018 £'000	2017 £'000
Members' agents fees advances:		
Due within one year	102	85
Due after one year	271	184
	373	269

All creditors are payable to Syndicate 2791.

13. Creditors Arising Out of Insurance Operations	2018 £'000	2017 £'000
Creditors arising out of reinsurance operations:		
Due within one year	1,636	772
Due after one year	12,955	4,829
	14,591	5,601

## NOTES TO THE ACCOUNTS

continued

14. Other Creditors	2018 £'000	2017 £'000
Due within one year		
Profit commissions	513	676
Inter-syndicate loan	157	20
	<b>670</b>	<b>696</b>
Due after one year		
Profit commissions	–	498
Inter-syndicate loan	446	238
	<b>446</b>	<b>736</b>
	<b>1,116</b>	<b>1,432</b>

### 15. Cash and cash equivalents

The syndicate operates on a funds withheld basis and consequently there are no movements in cash, portfolio investments and financing.

### 16. Related Parties

All the syndicate's transactions, including the reinsurance to close, are with or via Syndicate 2791, which is also managed by the managing agent, MAP. All business ceded by Syndicate 2791 is accepted on an arm's length basis and the main terms of the reinsurance contract are set out in the Report of the Directors of the Managing Agent.

During the year, the following transactions between the syndicates occurred:

	2018 £'000	2017 £'000
Premiums receivable	17,240	5,098
Paid claims	(8,132)	(3,790)
Ceding commission	(832)	(256)
Overriding commission	(159)	(46)
Net interest received	(12)	157
Reinsurance to close premium – 2016 (2015) year of account	(28)	47
Balance owed by Syndicate 2791 to Syndicate 6103 at the end of the period:		
Due within one year	2,908	3,833
Due after one year	(2,157)	2,163

Profit commission of £0.01m (2017: £0.1m) is due to the managing agent in respect of the results for this calendar year.

MAP is a wholly owned subsidiary of Managing Agency Partners Holdings Limited, the equity of which is 90.1% owned by MAP Equity Limited, a company that is owned by an employee share trust and the staff of the managing agency and syndicate.

The directors' interests in the ordinary share capital of MAP Equity Limited, which has an issued share capital of 250,000 £1 shares, during the year, were as follows:

	A Shares (voting)	B Shares (non-voting)
R K Trubshaw	33,000	–
A Kong	22,000	–
J D Denoon Duncan	–	8,333
P Langridge	–	2,500
C J Smelt	5,000	2,500
R J Sumner	–	10,000



# NOTES TO THE ACCOUNTS

---

continued

## 16. Related Parties *continued*

Messrs. Shipley, Denoon Duncan, Kong, Trubshaw, Sumner and Smelt, or their related parties, participate on Syndicate 6103 via a dedicated, but unaligned to the managing agent, corporate member, Nomina No. 208 LLP. Nomina No. 208 LLP commenced underwriting on the 2007 year of account. For the 2018 year of account Nomina No. 208 LLP provided £1.6m (2017: £0.8m) of capacity on Syndicate 6103 representing 3.3% (2017: 4.8%) of capacity. MAP has no direct or indirect interest in Nomina No. 208 LLP.

Messrs. Shipley, Kong, Trubshaw, Sumner, and Smelt, or their related parties, also participate on Syndicate 6103 via MAP Capital Limited (MCL) which commenced underwriting on the 2013 year of account. For the 2018 year of account MCL provided £2.6m (2017: £1.46m) of capacity on Syndicate 6103 representing 5.5% (2017: 9.3%) of capacity.

There is no compensation charged by the syndicate to key management. There are no other transactions or arrangements requiring disclosure.

## 17. Funds at Lloyd's

Every member is required to hold capital at Lloyd's which is held in trust and known as Funds at Lloyd's (FAL). These funds are intended primarily to cover circumstances where syndicate assets prove insufficient to meet participating members' underwriting liabilities.

The level of FAL that Lloyd's require a member to maintain is determined by Lloyd's based on PRA requirements and resource criteria. FAL has regard to a number of factors including the nature and amount of risk to be underwritten by the member and the assessment of the reserving risk in respect of business that has been underwritten. Since FAL is not under the management of the managing agent, no amount has been shown in these financial statements by way of such capital resources. However, the managing agent is able to make a call on the members' FAL to meet liquidity requirements or to settled losses.

## 18. Events After the Reporting Period

In accordance with the reinsurance contract with Syndicate 2791, the 2016 Year of Account will be commuted. An RITC will be effected with Syndicate 2791 and the reserves carried for the 2016 Year of Account (amounting to £0.1m) transferred to that syndicate in 2017.

## 19. Items not Disclosed in the Statement of Financial Position

The syndicate has not been party to any arrangement which is not reflected in its statement of financial position.

## 20. Risk Management of Insurance Risk

This syndicate is a Special Purpose Arrangement writing a single line of business, property catastrophe reinsurance on United States risks (excluding terrorism and retrocession business). Its insurance risk is principally related to pricing and the measurement of catastrophe losses which have occurred and those to which the syndicate is currently exposed.

The syndicate uses its own proprietary pricing models which set a technical price for each risk based on a required profitability margin. To mitigate against the potential for under-pricing of insurance risk these models are actively back tested against underwriting performance and by checking actual exposure to losses versus predicted loss exposure.

The other principal insurance risk the syndicate is subject to, is that actual claims and benefit payments or the timing thereof, may differ from expectations. This is influenced by the frequency of claims, severity of claims and actual claims paid. Therefore, the objective of the syndicate is to ensure that sufficient reserves are available to cover these liabilities. The most significant claim risks arise from natural disasters. The claim risk exposure is mitigated by strict claim review policies to assess all new and ongoing claims, regular detailed review of claims handling procedures and frequent investigation of possible fraudulent claims.

The syndicate further enforces a policy of actively managing and promptly pursuing claims, in order to reduce its exposure to unpredictable future developments that can negatively impact the business. Claim inflation risk for a short tail property catastrophe insurance syndicate such as Syndicate 6103 is mainly generated by "demand inflation" when following a loss demand for certain assets or trades results in higher pricing; this is mitigated by taking expected demand inflation into account when estimating insurance contract liabilities.

Risks written usually cover twelve months duration.

The syndicate limits its exposure to uncertain loss by imposing maximum claim amounts on certain contracts as well as allowing the potential use of reinsurance arrangements in order to limit exposure to catastrophic events (e.g. hurricanes, earthquakes and flood damage). The purpose of these underwriting and reinsurance strategies is to limit exposure to catastrophes based on the syndicate's risk appetite as decided by management. While the syndicate may purchase reinsurance, it has not done so for the three years accounted in these financial statements. No claims have been made against previously purchased reinsurance.

## NOTES TO THE ACCOUNTS

continued

### 20. Risk Management of Insurance Risk *continued*

The overall risk appetite aim is to limit the downside risk to a 125% ultimate loss on Stamp capacity following any one of the Lloyd's prescribed Realistic Disaster Scenarios (RDS). The downside risk takes into account the net of any reinsurance RDS loss and reinstatement premiums.

The syndicate uses its own proprietary risk management software to assess catastrophe exposure. However, there is always a risk that the assumptions and techniques used in these models are unreliable or that claims arising from an event not modelled are greater than those arising from a modelled event.

As a further guide to the level of catastrophe exposure written by the syndicate, the following table shows hypothetical claims arising for various realistic disaster scenarios based on the syndicate's risk exposures at 1 January 2019:

RDS	Market Loss (insured) £m	Estimated Gross Claims £m	Estimated Net Claims £m
Miami Dade	140,482	32	30
Pinellas (West Coast Florida Windstorm)	131,809	51	48
Gulf of Mexico	109,981	32	29
North East USA Hurricane	80,269	51	48
San Andreas (San Francisco)	45,961	32	30
Elsinore (Los Angeles)	40,562	29	28

Estimated net claims are net of reinstatement premiums. The syndicate has no reinsurance at this date.

All of the syndicate's claims are geographically generated from the United States and the vast majority are payable in US dollars.

#### Key assumptions

The principal assumption underlying the claim estimates is that future claims development will follow a similar pattern to past claims development experience. This includes assumptions in respect of individual and average claim costs, claim handling costs, claim inflation factors and underwriting year. Judgement is further used to assess the extent to which external factors such as judicial decisions and government legislation affect the estimates.

Other key circumstances affecting the reliability of assumptions include variation in interest rates, judicial judgements, and legal delays in settlement. All business is in US dollars and therefore changes in currency may affect reported claims when converted to sterling but do not affect the payments in underlying currency.

#### Sensitivities

The claim liabilities are sensitive to the key assumptions that follow. It has not been possible to quantify the sensitivity of certain assumptions such as legislative changes or uncertainty in the estimation process. The following analysis is performed for reasonably possible movements in key assumptions with all other assumptions held constant, showing the impact on gross and net liabilities, profit and members' balances.

The underlying sensitivity analysis is performed by underwriting year. The correlation of assumptions will have a significant effect in determining the ultimate claims liabilities, but to demonstrate the impact due to changes in assumptions, assumptions had to be changed on an individual basis. It should be noted that movements in these assumptions are not necessarily linear.

	2018 £'000	2017 £'000
Gross and net outstanding claims (note 5)	11,009	1,882
Impact of 10% increase in gross and net outstanding claims	1,101	188
Impact of 10% increase in gross and net 2018 CAT losses	2,004	489

The impact on both profit and members' balances are those figures above less profit commission of £8k (2017: £16k).

The syndicate has material exposure to the Hurricanes Florence and Michael and California Wildfires in the 2018 year of account. This increases the uncertainty of the syndicate's total reserves, but does not increase that uncertainty in an adverse direction significantly beyond the normal range of uncertainty for insurance liabilities at this stage of development. For the avoidance of doubt, the syndicate has no material exposure to these hurricanes on either the 2016 or 2017 years of account.

The method used for deriving sensitivity information and significant assumptions did not change from the previous period.

## NOTES TO THE ACCOUNTS

continued

### 20. Risk Management of Insurance Risk *continued*

#### *Claims development table*

The following table shows the estimates of ultimate claims, including both claims notified and IBNR for each successive underwriting year at each reporting date, together with cumulative payments to date. The ultimate claims estimates and cumulative payments are translated to sterling at the rate of exchange that applied to the Statement of Financial Position at the reporting date. Each prior year is restated at current exchange rates to provide a consistent view of changes to ultimate claims reserves.

In setting claims provisions the syndicate gives consideration to the probability and magnitude of future experience being more adverse than assumed and exercises a degree of caution in setting reserves where there is considerable uncertainty. In general, the uncertainty associated with the ultimate claims experience in an underwriting year is greatest when the underwriting year is at an early stage of development and the margin necessary to provide the confidence in the provision's adequacy is relatively at its highest. As claims develop, and the ultimate cost of claims becomes more certain, the relative level of margin maintained may decrease. However, due to the uncertainty inherent in the estimation process, the actual overall claim provision may not always be in surplus.

This syndicate has Reinsured to Close all liabilities on 2015 and prior underwriting years to Syndicate 2791 and therefore Syndicate 6103's estimate of ultimate claims cease to change after three years for any year of account.

Syndicate 6103 no longer has any exposure to liabilities reinsured out by Reinsurance to Close. Consequently, in accordance with FRS103, the claims development information disclosed is only for the most recent three years because there is no future uncertainty on reinsured prior years of account.

The ultimate claims are adjusted for the unearned proportion of claims, any unallocated future expense claims costs and cumulative payments to date to provide the reconciliation to the syndicate's gross and net statement of financial position reserves and are also shown in note 5.

#### *Gross and net claim triangles by year of account as at 31 December 2018*

	2016	2017	2018	Total
	£'000	£'000	£'000	£'000
Estimate of Gross and Net Ultimate Claims				
12 months	1,565	5,424	18,211	
24 months	1,371	5,435	–	
36 months	1,431	–	–	
<b>Total Ultimate losses</b>	<b>1,431</b>	<b>5,435</b>	<b>18,211</b>	<b>25,077</b>
Less cumulative paid claims	(1,378)	(4,764)	(7,054)	(13,196)
Less unearned portion of ultimate losses	–	–	(872)	(872)
<b>Gross and Net claims liabilities</b>	<b>53</b>	<b>671</b>	<b>10,285</b>	<b>11,009</b>

In 2018, there has been an overall deficit in ultimate claims of £0.1m (2017: surplus of £0.2m) due primarily to an increase in claims estimates from uncertainty around 2017 catastrophe exposure unwinds.

### 21. Risk Management of Currency Risk

Currency risk is the risk that the fair value or future cash flows of a financial instrument will fluctuate because of changes in foreign exchange rates.

Although its reporting currency is sterling, the syndicate's functional currency is US dollars and so its exposure to foreign exchange risk arises primarily with respect to transactions in Euro, sterling and Canadian dollars. The exchange exposure is further limited by the syndicate making profit distributions in both sterling and US dollars resulting in the actual exchange risk to members being between just those currencies converted to sterling to make profit distributions.

In the case of Syndicate 6103 these currencies are Euro and Canadian dollars and, as shown in the table below, the quantum of Euro and Canadian dollar assets and liabilities is not significant.

## NOTES TO THE ACCOUNTS

continued

### 21. Risk Management of Currency Risk *continued*

The tables below set out the underlying currency exposure to the syndicate although it should be noted that profits are only paid out in sterling and US dollars:

2018	GBP £'000	USD £'000	EUR £'000	CAD £'000	Total £'000
Insurance and reinsurance receivables	–	28,544	–	–	28,544
Other assets	362	11	–	–	373
<b>Total assets</b>	<b>362</b>	<b>28,555</b>	<b>–</b>	<b>–</b>	<b>28,917</b>
Technical provisions	–	(12,459)	–	–	(12,459)
Insurance and reinsurance payables	–	(14,591)	–	–	(14,591)
Other creditors	(505)	(611)	–	–	(1,116)
<b>Total liabilities</b>	<b>(505)</b>	<b>(27,661)</b>	<b>–</b>	<b>–</b>	<b>(28,166)</b>
<b>Members' balances by currency</b>	<b>(143)</b>	<b>894</b>	<b>–</b>	<b>–</b>	<b>751</b>

The syndicate has negative net assets in GBP. This liability is to Syndicate 2791 and will be settled out of the profit distribution on closure of the relevant year of account.

If sterling was to weaken by 10% and 20%, the impact on the above total converted sterling profit would be an increase of £0.1m and £0.2m respectively.

2017	GBP £'000	USD £'000	EUR £'000	CAD £'000	Total £'000
Insurance and reinsurance receivables	–	14,996	–	–	14,996
Other assets	265	4	–	–	269
<b>Total assets</b>	<b>265</b>	<b>15,000</b>	<b>–</b>	<b>–</b>	<b>15,265</b>
Technical provisions	–	(2,237)	–	–	(2,237)
Insurance and reinsurance payables	–	(5,601)	–	–	(5,601)
Other creditors	(347)	(1,084)	–	–	(1,431)
<b>Total liabilities</b>	<b>(347)</b>	<b>(8,922)</b>	<b>–</b>	<b>–</b>	<b>(9,269)</b>
<b>Members' balances by currency</b>	<b>(82)</b>	<b>6,078</b>	<b>–</b>	<b>–</b>	<b>5,996</b>

If sterling had weakened by 10% and 20%, the impact on the above comparative total converted sterling profit would have been an increase of £0.7m and £1.5m respectively.

### 22. Other Risk Management Matters

	2018 £'000	2017 £'000
<i>Interest rate risk</i>		
Impact of 50 basis point increase in interest rates on result	(171)	(214)
Impact of 50 basis points decrease in interest rates on result	171	212

The impact of the above interest rate sensitivity is within our investment parameter guidelines and management tolerance.

Interest rate risk is the risk that arises for bond owners from fluctuating interest rates. The sensitivity depends on two things, the bond's time to maturity, and the coupon rate of the bond. As interest rates rise, bond prices fall and vice versa, a bonds sensitivity to an increase in interest rates is magnified by its time to maturity.

Although the syndicate holds no investments it is exposed to interest rate risk by way of its share of the investment fund held on its behalf by Syndicate 2791.

## NOTES TO THE ACCOUNTS

---

continued

### 22. Other Risk Management Matters *continued*

For Syndicate 6103's investments held within Syndicate 2791 all are fixed income and are recorded at fair value. A sensitivity analysis is performed for reasonably possible movements in interest rates with all other variables held constant, showing the impact on profit and members' balances of the effects of changes in interest rates on:

- Fixed rate financial assets; and
- Variable rate financial assets.

The first of these measures the impact on profit or loss for the year (for items recorded at fair value, through the income statement) and on members' balances (for available for sale investments) that would arise in a reasonably possible change in interest rates at the reporting date on financial instruments at the period end. The second of these measures the change in interest income or expense over the period of the year attributable to a reasonably possible change in interest rates, based on floating rate assets and liabilities held at the reporting date.

The correlation of variables will have a significant effect in determining the ultimate impact on interest rate risk, but to demonstrate the impact due to changes in variables, the variables were altered on an individual basis.

It should be noted that movements in these variables are non-linear.

The method used for deriving sensitivity information and significant variables did not change from the previous period.

The syndicate has no significant concentration of interest rate risk.

Insurance liabilities are not discounted and therefore not exposed to interest rate risk.

#### **Equity price risk**

Equity price risk is the risk that the fair value or future cash flows of a financial instrument will fluctuate because of changes in market prices (other than those arising from interest rate risk or currency risk), whether those changes are caused by factors specific to the individual financial instrument or its issuer, or factors affecting all similar financial instruments traded in the market.

Syndicate 6103 does not have exposure to price risk as there are no equities in the element of funds held by Syndicate 2791 on behalf of Syndicate 6103.

#### **Liquidity risk**

Liquidity risk is the risk that the syndicate will encounter difficulty in meeting obligations associated with financial instruments. In respect of catastrophic events there is also a liquidity risk associated with the timing differences between gross cash out-flows and expected reinsurance recoveries.

However, the syndicate has no cash or investments and operates on a funds withheld basis with Syndicate 2791. Therefore, its liquidity risk is that Syndicate 2791 is unable to pay its debts as they fall due.

All of the syndicate assets and liabilities are netted off as part of the commutation settlement when each year of account closes at 36 months.

#### **Credit risk**

Credit risk is the risk that one party to a financial instrument will cause a financial loss to the other party by failing to discharge an obligation.

All insurance debtors are balances with A rated Syndicate 2791 and therefore its liquidity risk is that Syndicate 2791 is unable to pay its debts as they fall due.

There are no reinsurance recovery assets at the statement of financial position date.



MAP

Managing Agency Partners Ltd  
Syndicate 6103 at Lloyd's

Fitzwilliam House  
10 St. Mary Axe  
London  
EC3A 8EN  
UK

Tel: +44 (0)20 7709 3860  
Fax: +44 (0)20 7709 3861

[www.mapunderwriting.co.uk](http://www.mapunderwriting.co.uk)  
email: [map@mapunderwriting.co.uk](mailto:map@mapunderwriting.co.uk)



**Recycled**  
Supporting responsible  
use of forest resources

Cert no. TT-COC-002226  
[www.fsc.org](http://www.fsc.org)

©1996 Forest Stewardship Council

Produced by CPI Colour.....  
**CarbonNeutral**® printing company

